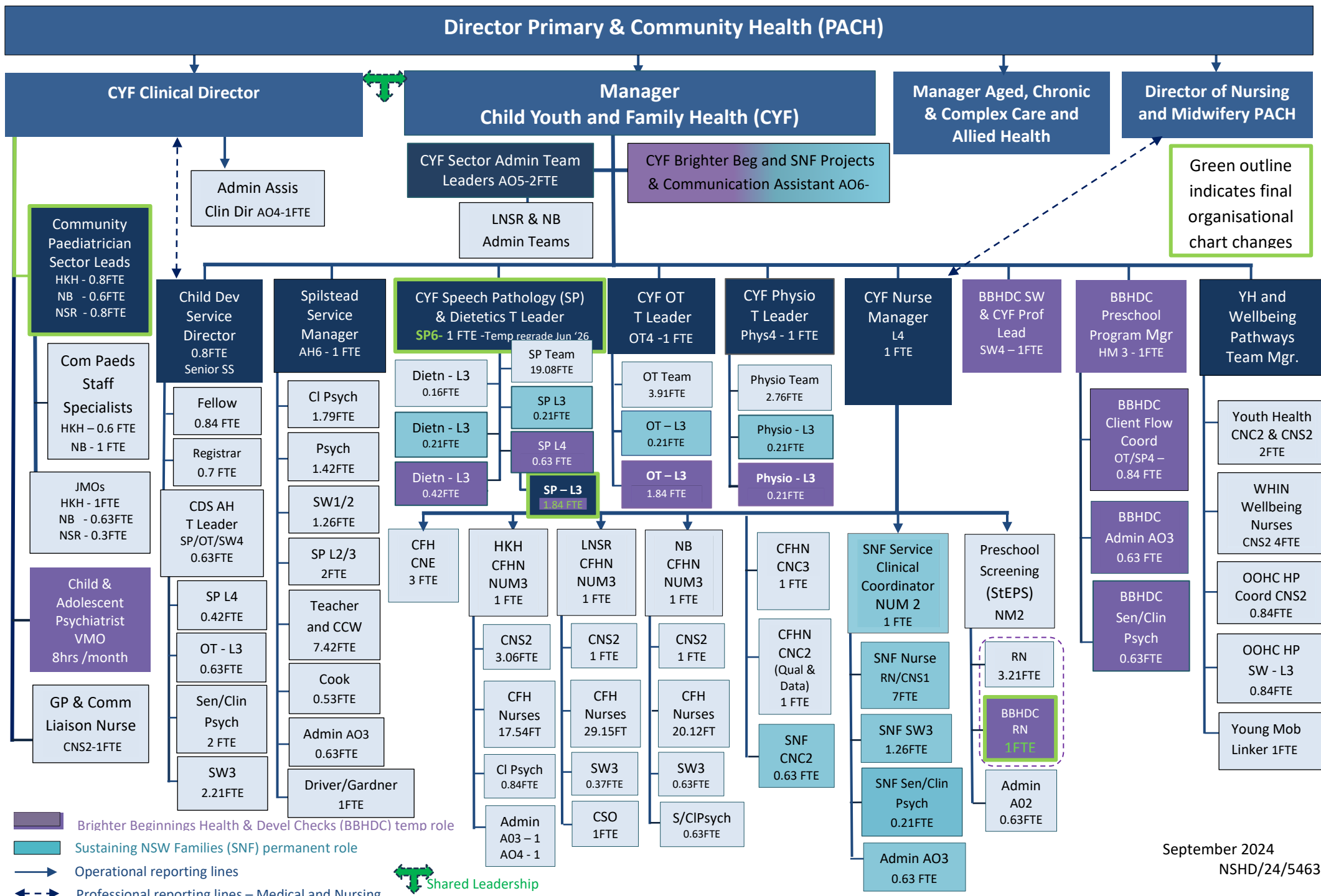


Final PACH - Child Youth and Family Health Organisational Chart



Green outline indicates final organisational chart changes

- Brighter Beginnings Health & Devel Checks (BBHDC) temp role
- Sustaining NSW Families (SNF) permanent role
- Operational reporting lines
- Professional reporting lines - Medical and Nursing
- Shared Leadership