

Proposed Redesign for Aboriginal Health

**Existing Position**

**Moved Position**

**New Position**

**Indirect Reporting**

Executive Director Nursing and Midwifery

Director Aboriginal Health Strategy

**General Manager**  
Integrated & Community Health

**Director**  
Allied Health & Priority Communications

**Program Lead**  
Priority Populations

**Aboriginal Health Service Manager**  
1 FTE, HSM3

**Administration Coordinator**  
1 FTE, AO5

**Administration Support Officer**  
1 FTE, AO3

**Aboriginal Community Partnership Team**  
Service Coordinator  
1 FTE/HSM2

**Aboriginal Maternal & Child Health Team**  
Nursing/Midwifery Unit Manager  
1 FTE, NUM2

**Aboriginal Chronic Care Team**  
Nurse Manager  
1 FTE

**Aboriginal Health Education Officer**  
1 FTE, HEOG

**Aboriginal Maternal & Infant Health Service**

**Aboriginal Otitis Media Coordinator**  
1 FTE, HSM1

**Budjery Munya New Directions**

**Aboriginal Cardiac Rehabilitation Worker**  
1 FTE, AHW

**Aboriginal Occupational Therapy**  
0.84 FTE HP3

**Palliative Care Clinical Nurse Consultant**  
1 FTE, CNC2

**Aboriginal Health Education Officer (Sexual Health)**  
1 FTE, HEOG

**Aboriginal Health Worker/Practitioner**  
2 FTE AHW/P

**Aboriginal Health Worker/Practitioner**  
1.84 FTE AHW/P

**Aboriginal Chronic Care Nurse**  
2 FTE, CNS2

**Aboriginal Podiatrist**  
FTE 1.0 HP (Level TBC)

**Senior Palliative Care Worker**  
1 FTE, SHEOG

**Senior Aboriginal Health Worker (Violence, Abuse & Neglect)**  
1 FTE, SHEOG

**Aboriginal Midwife**  
2 FTE CNS1

**Child & Family Health Nurse**  
1.84 FTE CNS1 & RNB

**Aboriginal Health Worker (48hr follow up on discharge)**  
1 FTE, AHP

**Healthy Deadly Feet Worker**  
0.6FTE, AHW/P

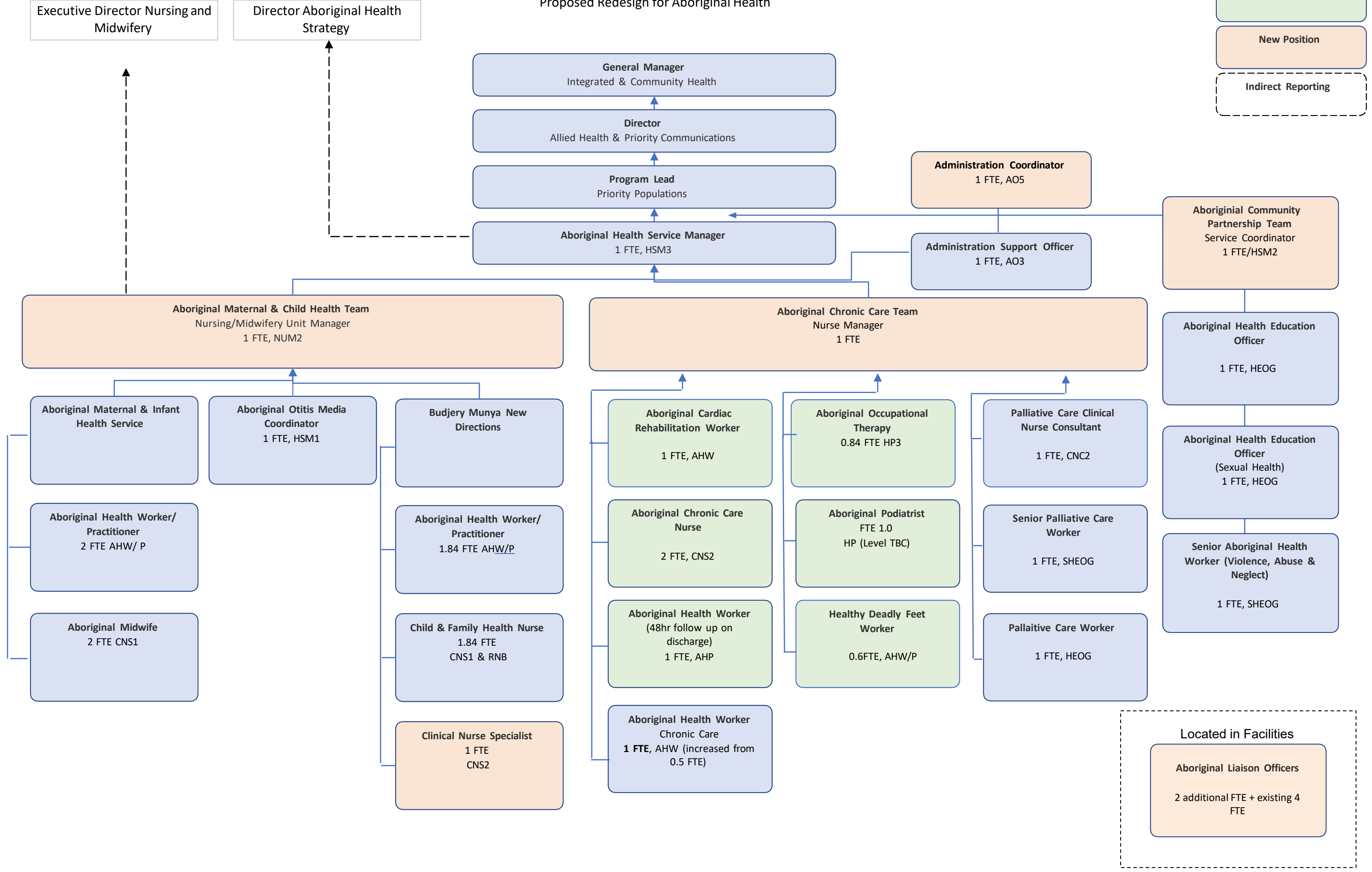
**Palliative Care Worker**  
1 FTE, HEOG

**Clinical Nurse Specialist**  
1 FTE CNS2

**Aboriginal Health Worker Chronic Care**  
1 FTE, AHW (increased from 0.5 FTE)

**Located in Facilities**

**Aboriginal Liaison Officers**  
2 additional FTE + existing 4 FTE



**Aboriginal Health Strategy  
Proposed Structure**

