

HEALTH INFRASTRUCTURE

Organisation Chart – From 1 July 2024

hinfra.health.nsw.gov.au

Health Infrastructure (HI) Organisation Chart

1. The Organisation Chart represents the entire organisation and is primarily arranged by:

- **Functions**, further categorised by Directors and their portfolios via hyperlink.
- **Regions**, further categorised by Projects (primarily under Local Health Districts) via hyperlink.

2. The Organisation Chart is updated and published:

- In accordance with HI's approved establishment.
- Through vetting the structure with HI's Leadership Team.
- On a monthly basis.

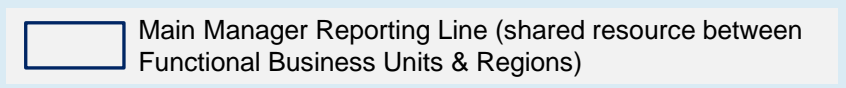
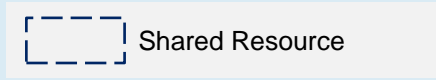
3. The Organisation Chart is version controlled and:

- This version is effective **1 July 2024**. Organisational changes occurring after this date will reflect in the next month's publication.
- No other organisation chart will be recognised at a business level.





4. The Organisation Chart is authored by People & Culture. For any questions, please contact them via [email](#).

5. Legends are defined at the bottom of pages where applicable:

E.g.

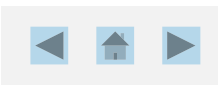


6. Use the buttons in the top right to navigate throughout the document:

-  • Back to previous slide
-  • Back to start of section
-  • Back to the beginning
-  • Forward to next slide

7. For HI Trainees and staff on leave/secondment, click [here](#).

HI Organisational Matrix



EMMA SKULANDER
Acting Chief Executive

OFFICE OF THE CE

- Audit

REGIONS

STRATEGY & OPERATIONS



KRYSTLE GRAY
Acting Chief Operating Officer

- Strategy, Risk & Innovation
- People & Culture
- Communications & Engagement
- Finance & ICT
- Legal
- Procurement

WESTERN



MARCUS MOSCOS
Acting Executive Director,
Western

NORTHERN



LEISA RATHBORNE
Executive Director,
Northern

RURAL & REGIONAL



AMANDA BOCK
Executive Director,
Rural & Regional

FUNCTIONAL

CAPITAL & COMMERCIAL ADVISORY



TROY HARVEY
Executive Director,
Capital & Commercial Advisory

- Sustainability and Assurance
- Economic and Health Facility Advisory
- Building and Asset Advisory
- Property and Commercial Advisory

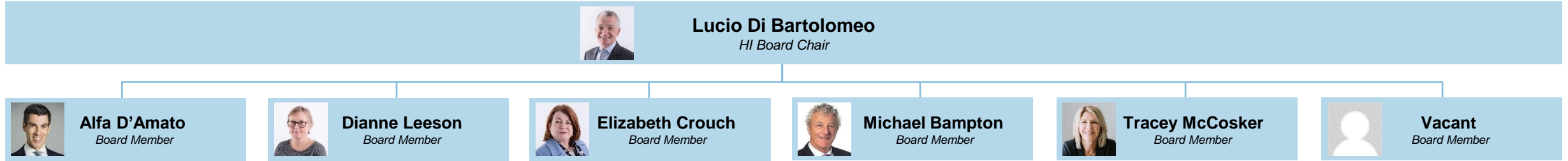
South Western Sydney LHD
Illawarra Shoalhaven LHD
Nepean Blue Mountains LHD
NSW Ambulance (Metro)
HealthShare
NSW Pathology
Ministry of Health, Health & Social Policy
Branch (End of Life Care Program)

Central Coast LHD
Northern Sydney LHD
Sydney LHD
South Eastern Sydney LHD
Western Sydney LHD
Sydney Children's Hospitals Network
Justice Health

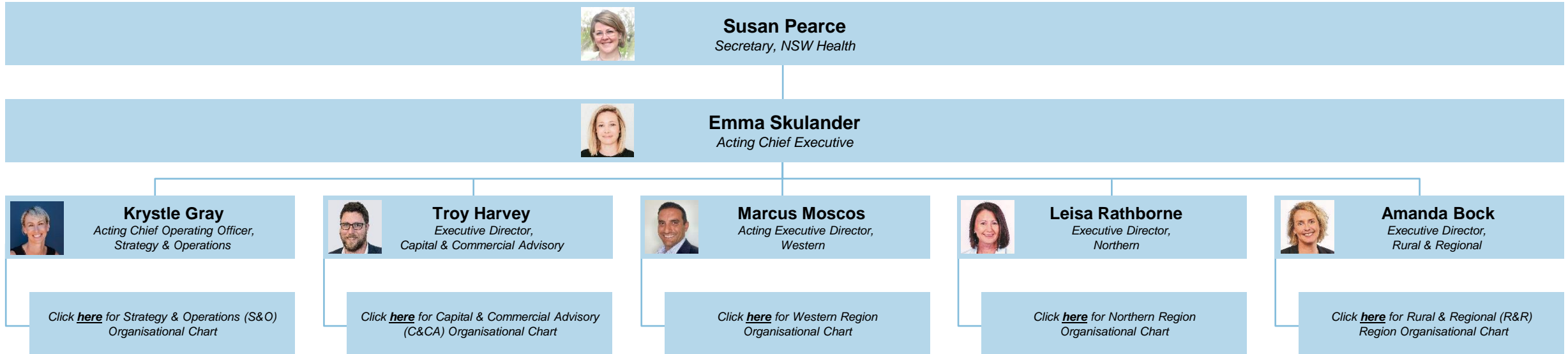
Northern NSW LHD
Mid North Coast LHD
Hunter New England LHD
Western NSW LHD
Southern NSW LHD
Murrumbidgee LHD
Far West LHD
NSW Ambulance (Regional)
Mental Health Branch
Albury Wodonga Health

Last updated June 2024.

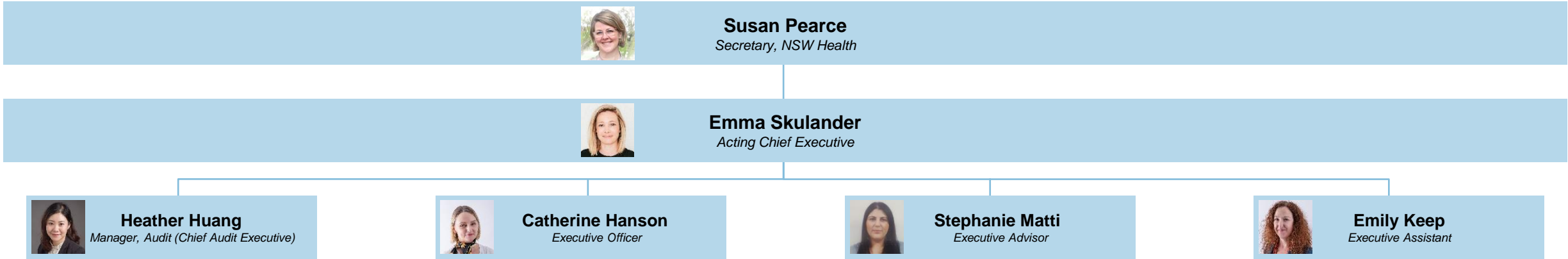
HI Board



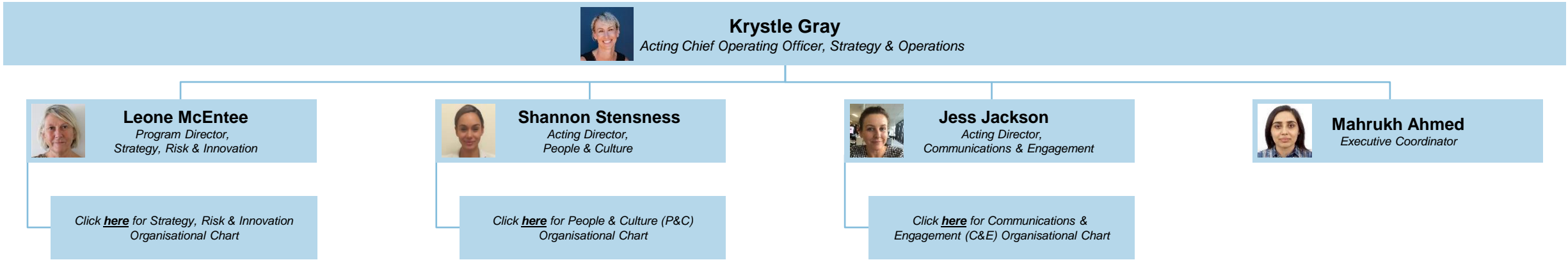
Office of the Chief Executive ⁽¹⁾



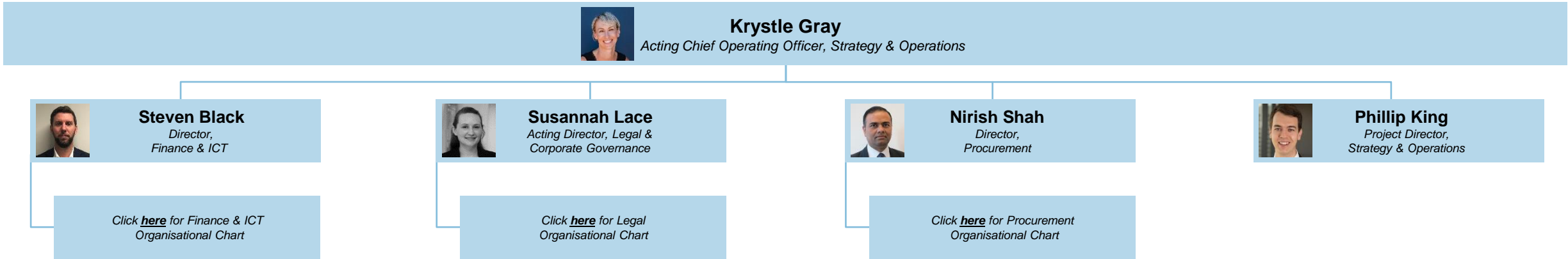
Office of the Chief Executive ⁽²⁾



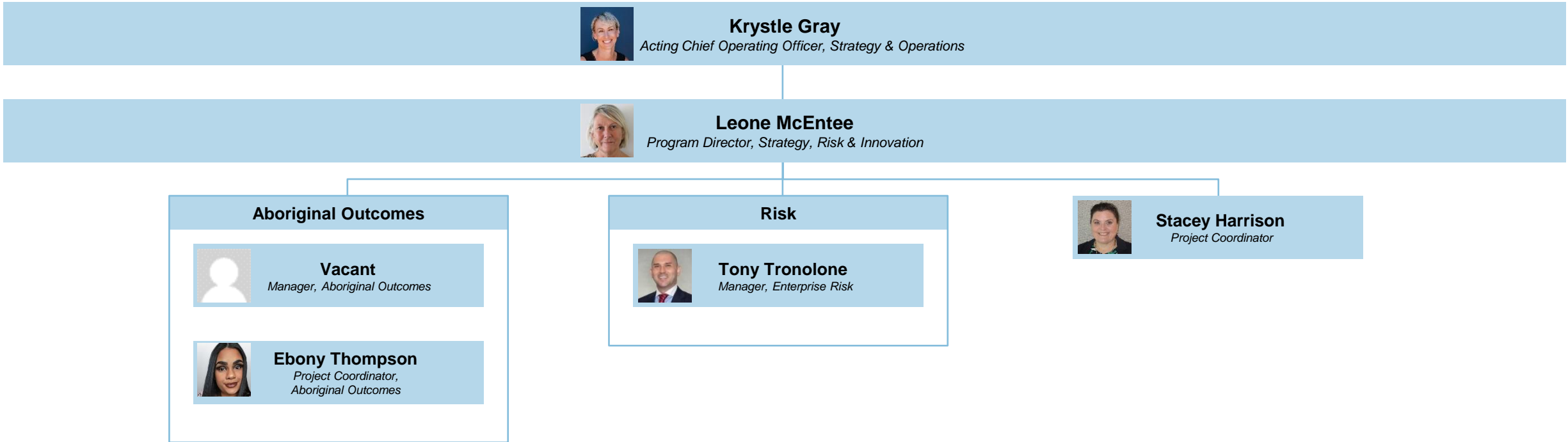
Strategy & Operations ⁽¹⁾



Strategy & Operations (2)



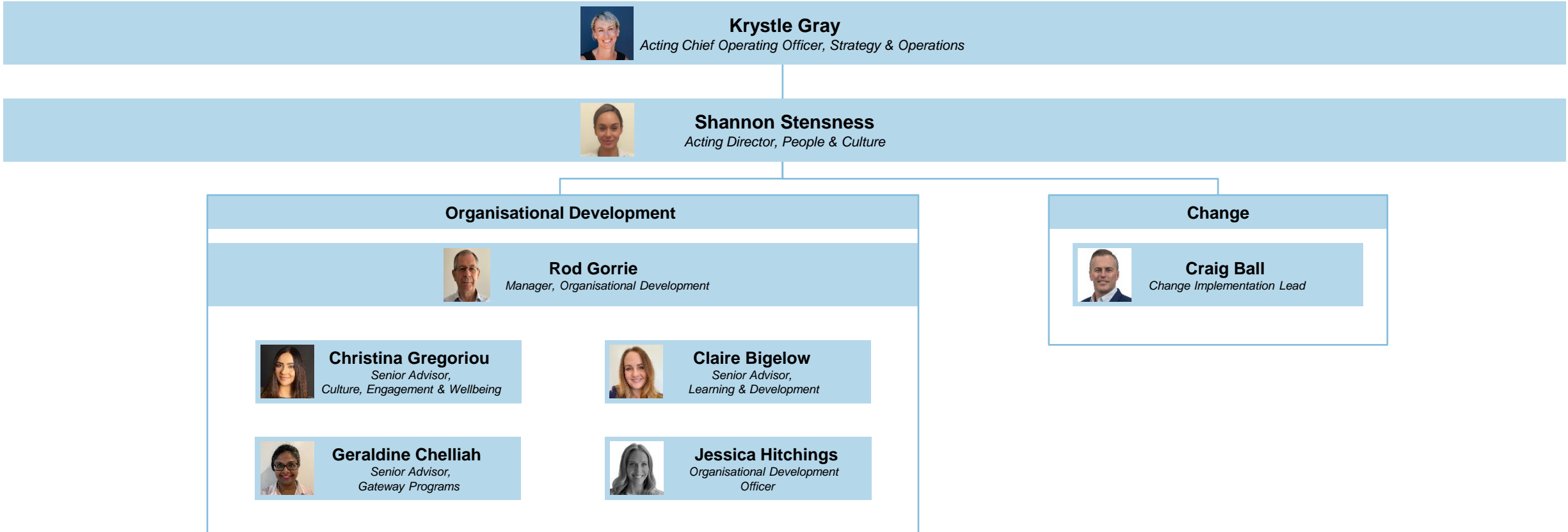
Strategy & Operations | Strategy, Risk & Innovation



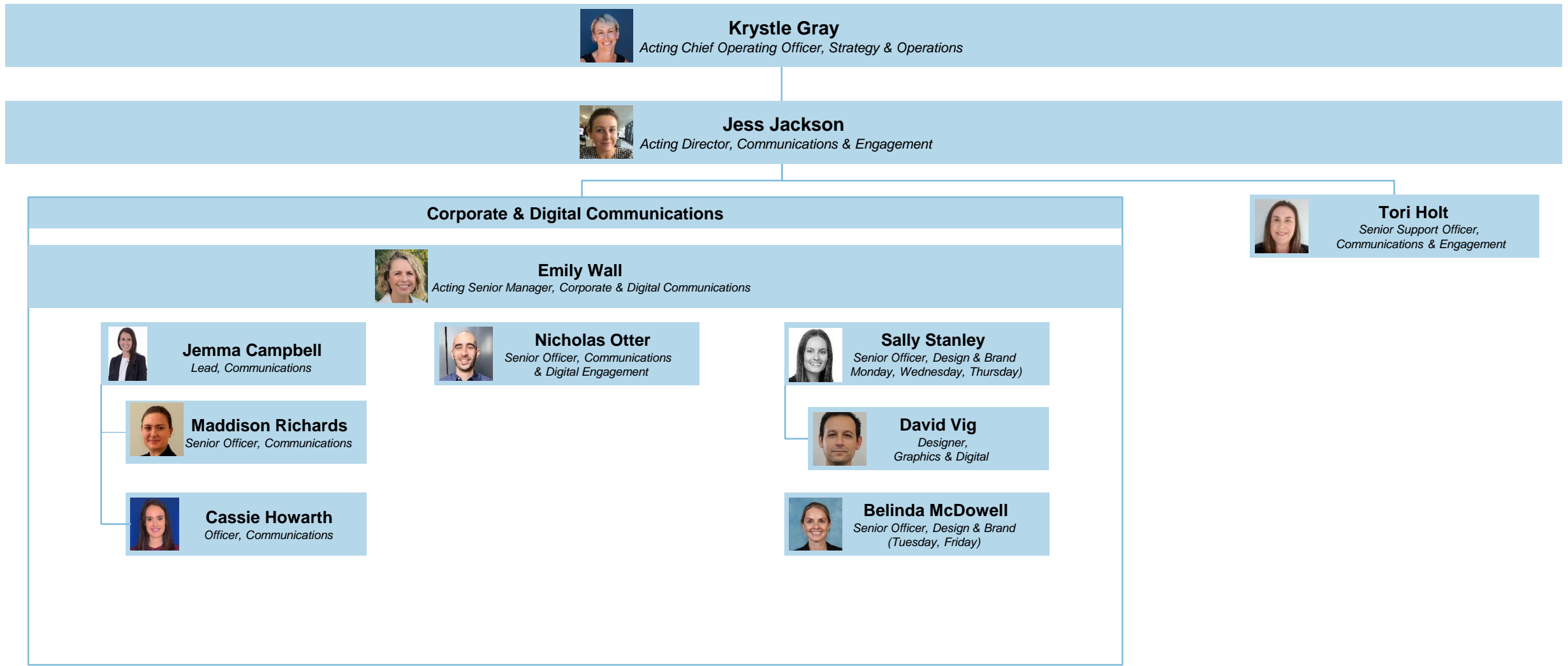
Strategy & Operations | People & Culture ⁽¹⁾



Strategy & Operations | People & Culture (2)



Strategy & Operations | Communications & Engagement ⁽¹⁾



Strategy & Operations | Communications & Engagement (2)



Krystle Gray
Acting Chief Operating Officer, Strategy & Operations



Jess Jackson
Acting Director, Communications & Engagement

Project Communications & Engagement



Matthew Satherley
Business Partner, Communications & Engagement, Western Region



Alice Brodie
Acting Business Partner, Communications & Engagement, Northern Region



Monique Wakefield
Business Partner, Communications & Engagement, R&R (North) Region



Suzy Randjelovic
Business Partner, Communications & Engagement, R&R (South) Region

Industry & Stakeholder Engagement



Solaire Eggert
Senior Manager, Industry & Stakeholder Engagement



Vacant
Lead, Industry & Stakeholder Engagement



Penuel Reed
Manager, Parliamentary & Ministerial Liaison



Jonathan Lim
Senior Officer, Parliamentary & Ministerial Services



Clare Barnes
Acting Manager, Media



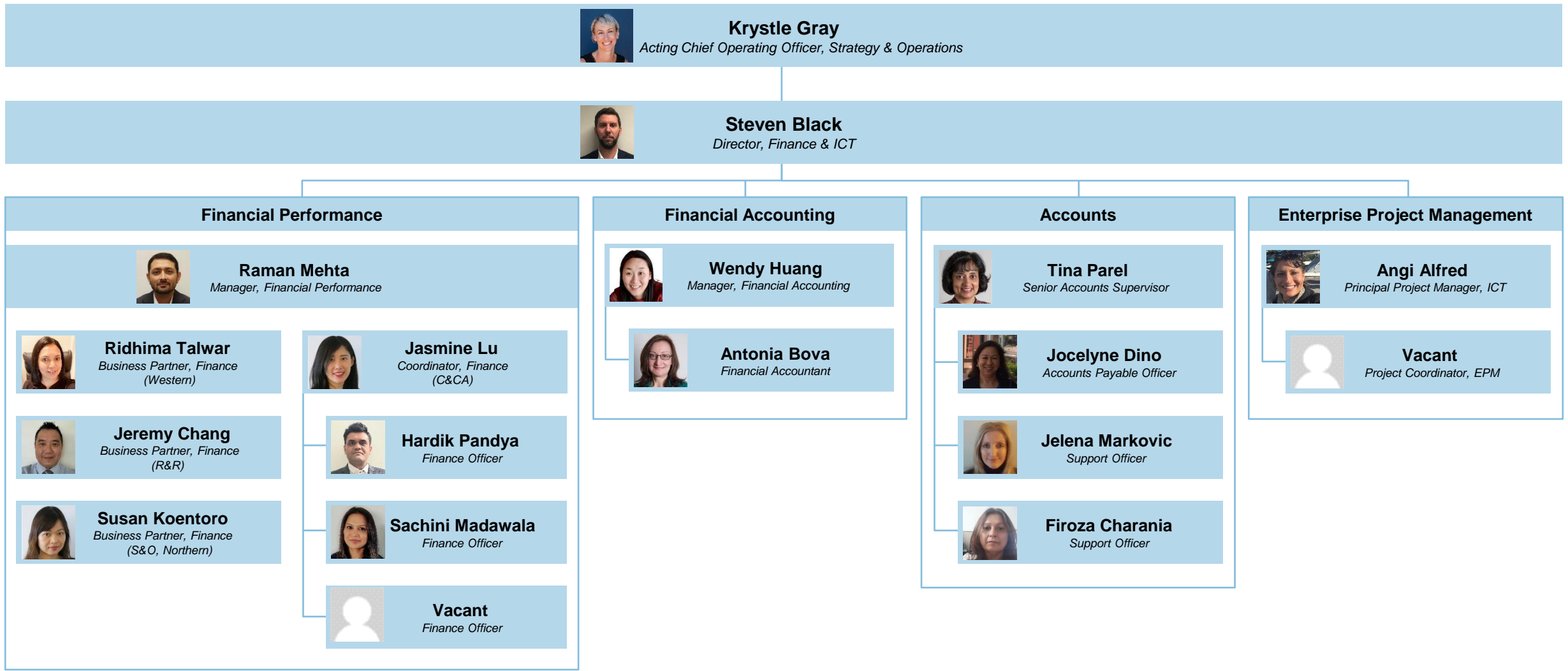
Joanne Drake
Senior Advisor, Media



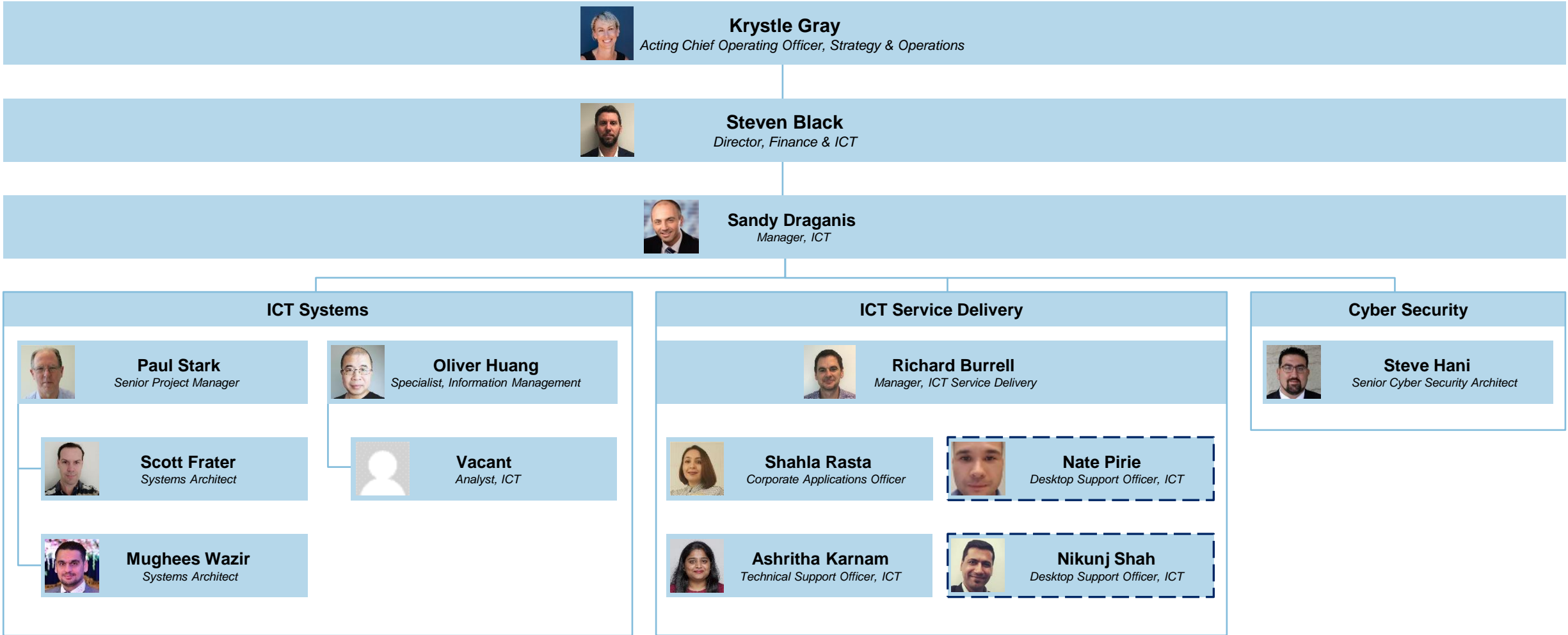
Lema Samandar
Acting Senior Advisor, Media

Main Manager Reporting Line (Shared Resource – See Northern Region)

Strategy & Operations | Finance & ICT ⁽¹⁾



Strategy & Operations | Finance & ICT ⁽²⁾



Resource from eHealth

Strategy & Operations | Legal



Krystle Gray
Acting Chief Operating Officer, Strategy & Operations



Susannah Lace
Acting Director, Legal & Corporate Governance



Weiping Lu
Principal Legal Officer

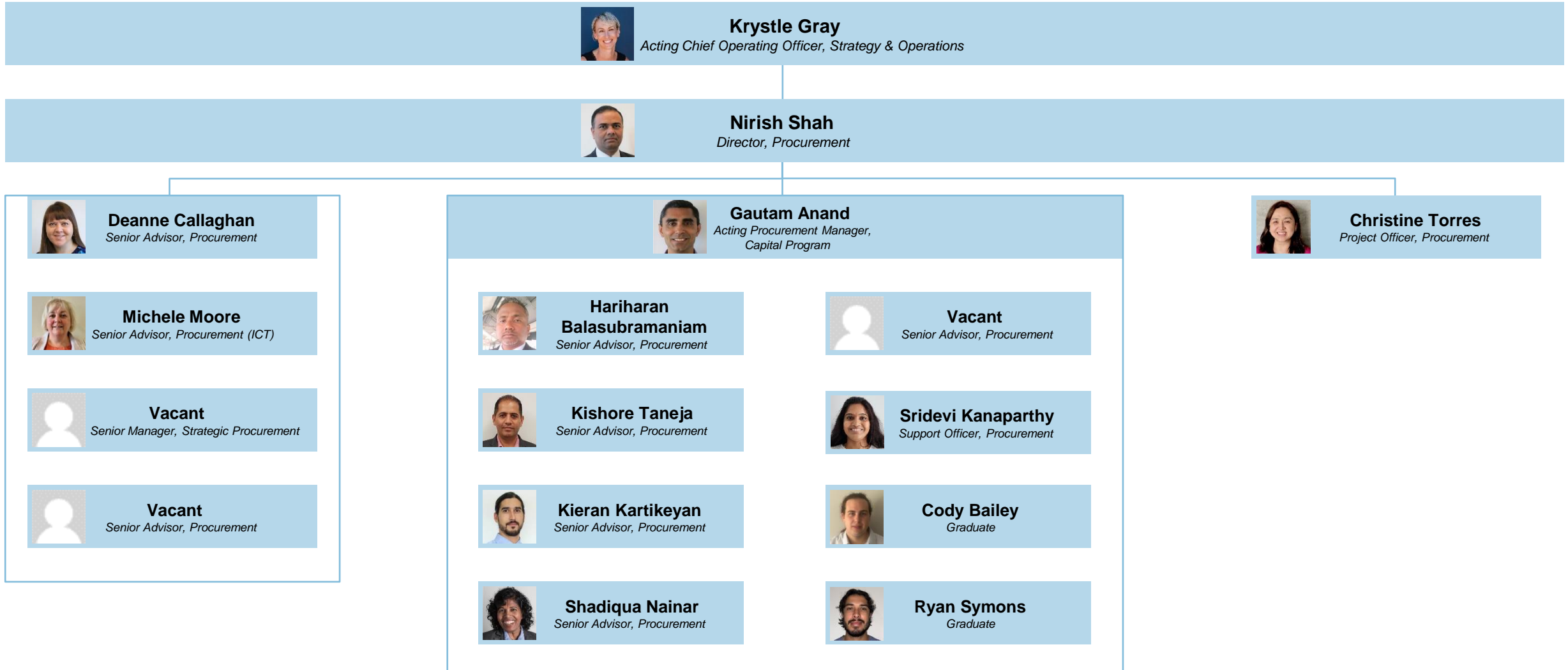


Kritika Naidu
Senior Legal Officer



Sarah Walker
Graduate

Strategy & Operations | Procurement



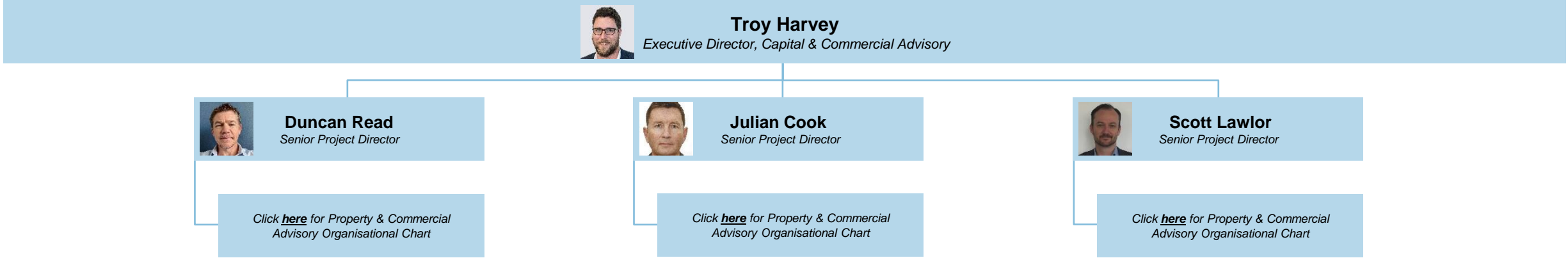
Capital & Commercial Advisory ⁽¹⁾

Recruitment for the position of Director, Economic & Health Facility Advisory is underway with a tentative start date of 1 July 2024.

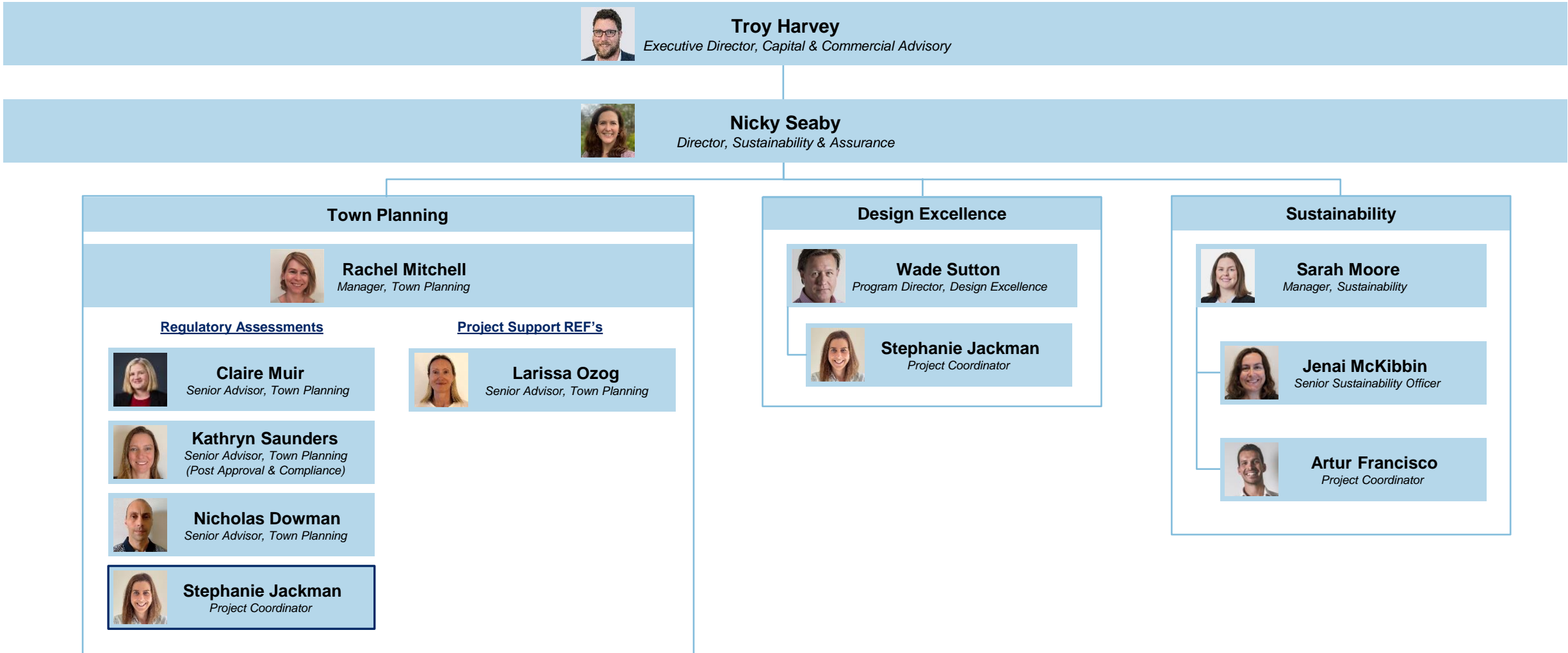


Temporary support whilst Margaret Kalatzis on leave (10 Jun to 26 Jul)

Capital & Commercial Advisory (2)



Capital & Commercial Advisory | Sustainability & Assurance ⁽¹⁾



 Main Manager Reporting Line (Shared Resource with Program Director, Design Excellence)

Capital & Commercial Advisory | Sustainability & Assurance ⁽²⁾



Troy Harvey
Executive Director, Capital & Commercial Advisory



Nicky Seaby
Director, Sustainability & Assurance

Program Performance & Assurance



Xueran Huang
Program Director, Performance & Assurance



Roger Simons
Program Director



Kate Haldane
Project Manager, Project Toolkit



Bradley McAllister
Manager, Portfolio Reporting & Assurance



Simone Schnell
*Project Officer
(Knowledge Library)*



Sao Kham Mo Kyaw Tun
Lead, Program Reporting & Insights



Leah Elks
Project Coordinator

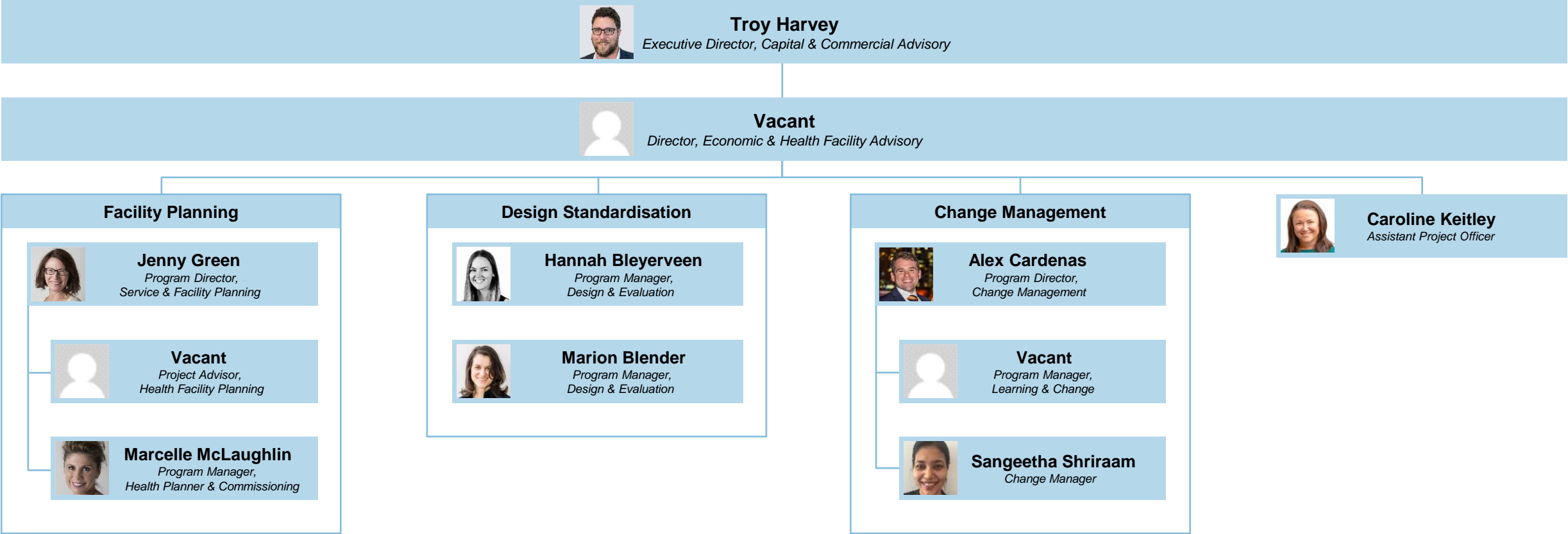


Sandra Chan
Project Coordinator

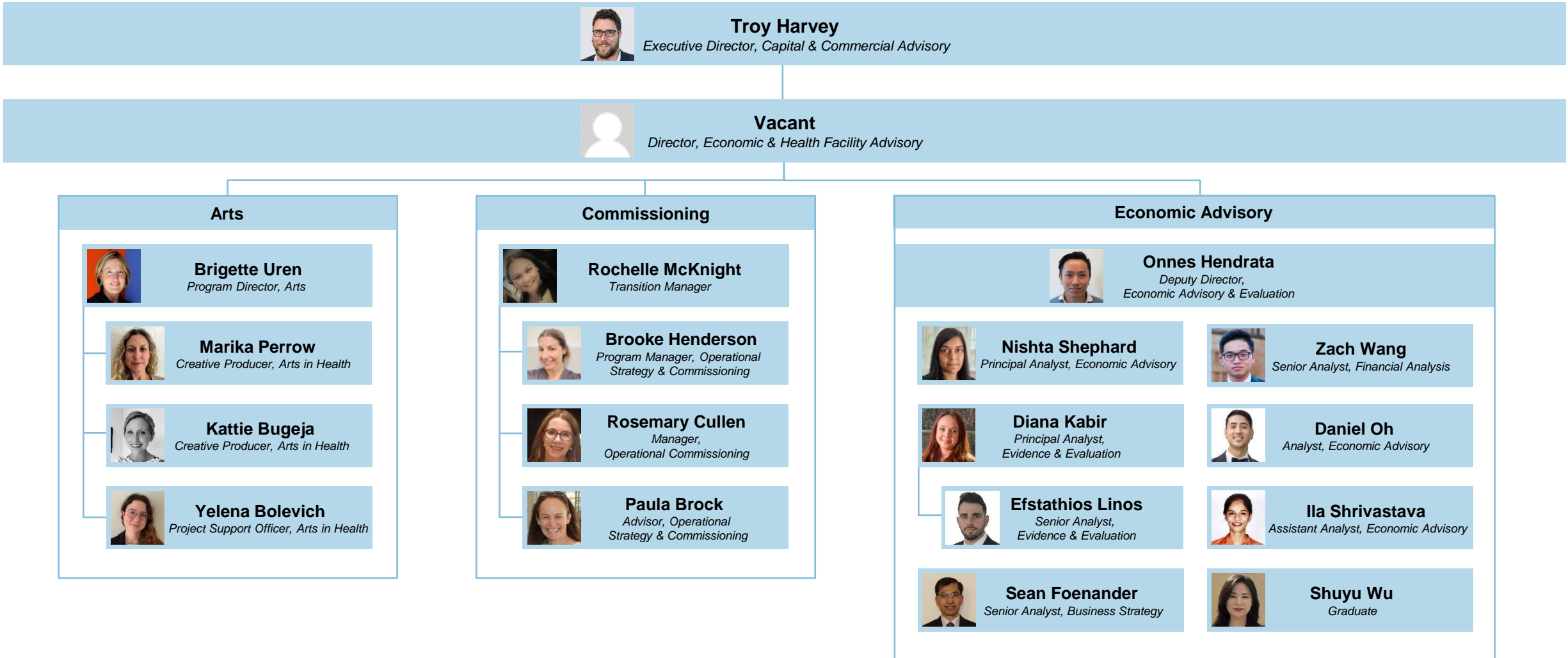


Mohamad Dergham
Graduate

Capital & Commercial Advisory | Economic & Health Facility Advisory (1)



Capital & Commercial Advisory | Economic & Health Facility Advisory (2)



Capital & Commercial Advisory | Economic & Health Facility Advisory ⁽³⁾




Troy Harvey
Executive Director, Capital & Commercial Advisory




Vacant
Director, Economic & Health Facility Advisory


Australasian Health Facility Guidelines (AusHFG)




Marnie Blackburn
Program Manager, AusHFG




Marilyn Mandigma
AusHFG Advisor




Shalyce Corney
AusHFG Advisor



Shirleen Chand
Project Manager, Australasian Health Infrastructure Alliance



Dita Zemlicka
Secretariat, Australasian Health Infrastructure Alliance



Vacant
Project Support Officer, Australasian Health Infrastructure Alliance

Capital & Commercial Advisory | Building & Asset Advisory ⁽¹⁾



Troy Harvey
Executive Director, Capital & Commercial Advisory



Michael Kalogeropoulos
Director, Building & Asset Advisory

Building Services



Ashwin Singh
Program Director,
Building & Facilities Advisory (B&FA)



Enzo Enzehaee
Program Manager,
B&FA (R&R)



Ben Leach
Program Manager,
B&FA (Western)



Ian Irwin
Program Manager,
B&FA (Northern)



Mark Austin
Program Manager,
Building Commissioning



David Bedingfeld
Program Manager,
B&FA (R&R)

Major Medical Equipment / FFE



Victor Tan
Program Director, Medical Equipment



James Hewlett
Project Advisor,
Major Medical Equipment



Maya Khalife
Advisor,
Medical Equipment Technology



Theyy Kurumoorthy
Advisor,
Medical Equipment Technology

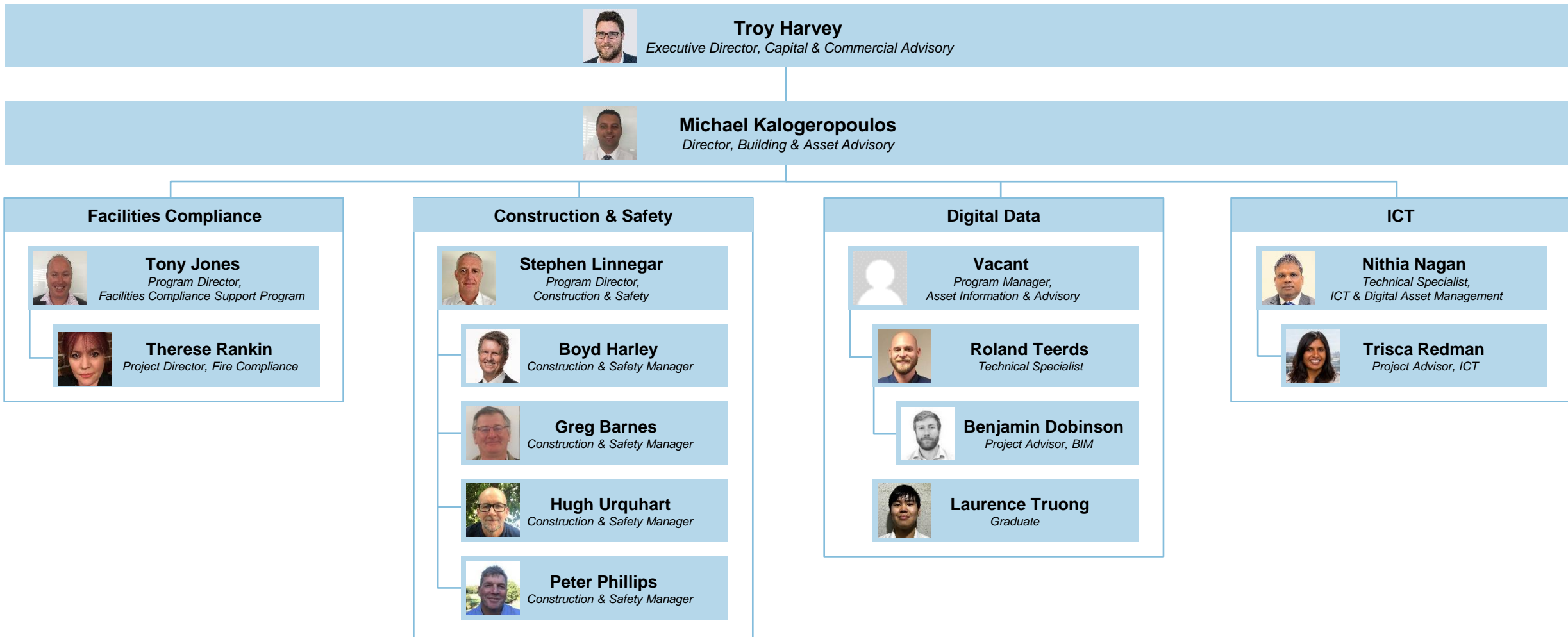


Jessica Howell
Project Advisor,
Furniture Fittings & Equipment

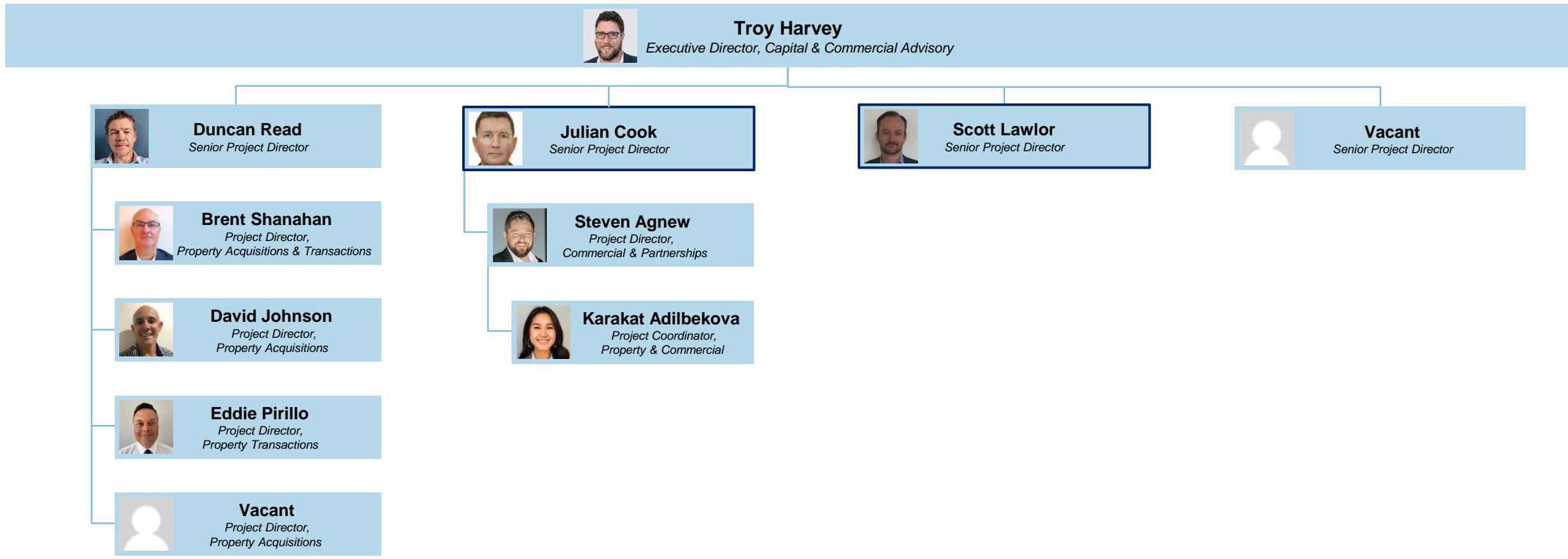


Sissa Jonovski
Senior Project Coordinator

Capital & Commercial Advisory | Building & Asset Advisory ⁽²⁾



Capital & Commercial Advisory | Property & Commercial Advisory




Main Manager Reporting Line (Shared Resource – Julian Cook: See Western Region | Scott Lawlor: See Northern Region)

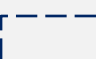
Regions

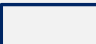
1. The following section reflects resource allocation information for current HI projects and is:

- Arranged by regions (**Western**, **Northern**, **Rural & Regional**).
- Further categorised by Projects (primarily under Local Health Districts).

2. For project allocation, a distinct legend is defined at the bottom of pages to indicate single or multiple projects and line managers, as follows:

 Solid box indicates single project and main manager reporting line

 Dotted line indicates multiple projects, and reporting line information in bold / underlined denotes **main manager reporting line**.

 Solid line indicates shared resource between Regions and Functional Business Units

- Many people appear more than once across different projects.
- This results in multiple reporting lines according to the projects; however, each person will have the **one direct line manager**.

3. Abbreviations / Acronyms:

- APD – Assistant Project Director
- C&E – Communications & Engagement
- LHD – Local Health District
- MH – Mental Health
- PD – Project Director
- PM – Project Manager
- RAIR – Rural Ambulance Infrastructure Reconfiguration
- SAMIS – Sydney Ambulance Metropolitan Infrastructure Strategy
- SPD – Senior Project Director
- SWMHIP – Statewide Mental Health Infrastructure Program

Western Region



Western Region | Projects



Marcus Moscos
Acting Executive Director, Western

South Western Sydney LHD

Aerotropolis - Western Parkland City



Steve Hall
Senior Project Director
(Reports to Marcus Moscos)



Lucy Fokkema
Project Director
(Reports to Steve Hall)



Jullie Jin
Assistant Project Officer
(Reports to Lucy Fokkema)

Bankstown Redevelopment



Marcus Moscos
Senior Project Director



Matthew Von Bertouch
Project Director
(Reports to Marcus Moscos)



Lilly Doleneć
Manager, C&E
(Reports to Marcus Moscos)



Alanna Mills
Senior Coordinator
(Reports to Matthew Von Bertouch)

Bowral & District Hospital Stage 2



Marcus Moscos
Senior Project Director



Matthew Von Bertouch
Project Director
(Reports to Marcus Moscos)



Alex Frost
Project Coordinator
(Reports to Matthew Von Bertouch)



Patrick Collins
Project Director
(Reports to Marcus Moscos)

Campbelltown Hospital Stage 2

Fairfield Hospital Redevelopment



Andrew Paris
Senior Project Director
(Reports to Marcus Moscos)



Joshua Scharfegger
Project Director
(Reports to Andrew Paris)



Lilly Doleneć
Manager, C&E
(Reports to Andrew Paris)



Michael Lieu
Graduate
(Reports to Andrew Paris)

Liverpool Health & Academic Precinct



Andrew Paris
Senior Project Director
(Reports to Marcus Moscos)



Anthony Dimech
Senior Project Director
(Reports to Andrew Paris)



Simon Brender
Project Director
(Reports to Andrew Paris)



Michael Lieu
Graduate
(Reports to Andrew Paris)

Multiple Projects

Western Region | Projects



Marcus Moscos
Acting Executive Director, Western

Illawarra Shoalhaven LHD

Milton Ulladulla Hospital Upgrades



Benjamin Ferry
Senior Project Director
(Reports to Marcus Moscos)



Jenny Easton
Project Coordinator
(Reports to Benjamin Ferry)



Pallavi Singh
Graduate
(Reports to Benjamin Ferry)

Shellharbour Hospital Redevelopment



Marcus Moscos
Senior Project Director



Dominic Longo
Senior Project Director
(Reports to Marcus Moscos)



Patrick Collins
Project Director
(Reports to Dominic Longo)



Donson Phetrasy
Acting Project Lead, C&E
(Reports to Marcus Moscos)

Shoalhaven Hospital Redevelopment



Marcus Moscos
Senior Project Director



Jeremy Hart
Project Director
(Reports to Marcus Moscos)



Gerard Maestrelli
Assistant Project Director
(Reports to Jeremy Hart)



Penny Cox
Project Lead, C&E
(Reports to Marcus Moscos)

Wollongong Hospital Upgrades



Benjamin Ferry
Senior Project Director
(Reports to Marcus Moscos)



Jenny Easton
Project Coordinator
(Reports to Benjamin Ferry)

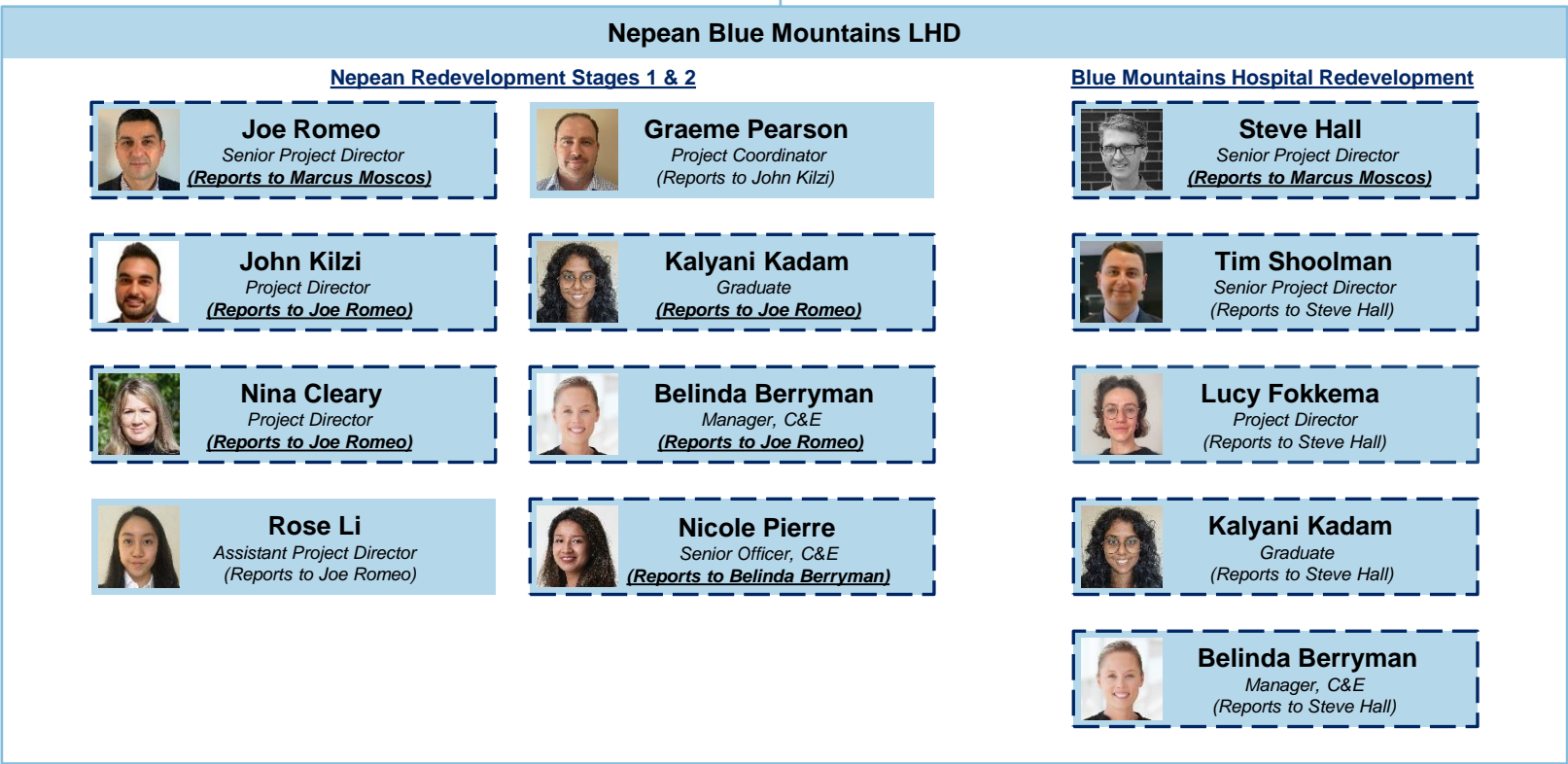


Pallavi Singh
Graduate
(Reports to Benjamin Ferry)

Western Region | Projects



Marcus Moscos
Acting Executive Director, Western



Multiple Projects

Western Region | Projects

Marcus Moscos
Acting Executive Director, Western

World Class End of Life Palliative Care Program

<p>Chris Horton Senior Project Director <i>(Reports to Marcus Moscos)</i></p>	<p>Belinda Berryman Manager, C&E <i>(Reports to Chris Horton)</i></p>
<p>Nina Cleary Project Director <i>(Reports to Chris Horton)</i></p> <p style="text-align: center;"><u>Westmead</u></p>	<p>Nicole Pierre Senior Officer, C&E <i>(Reports to Belinda Berryman)</i></p> <p style="text-align: center;"><u>Tamworth</u></p>
<p>Rabbie Morkos Project Director <i>(Reports to Chris Horton)</i></p> <p style="text-align: center;"><u>Wyang</u></p>	<p>Bronwyn Chalker Project Director <i>(Reports to Chris Horton)</i></p> <p style="text-align: center;"><u>Nepean</u></p>
<p>Narelle Bromilow Project Director <i>(Reports to Chris Horton)</i></p>	<p>John Kilzi Project Director <i>(Reports to Chris Horton)</i></p>

HealthShare

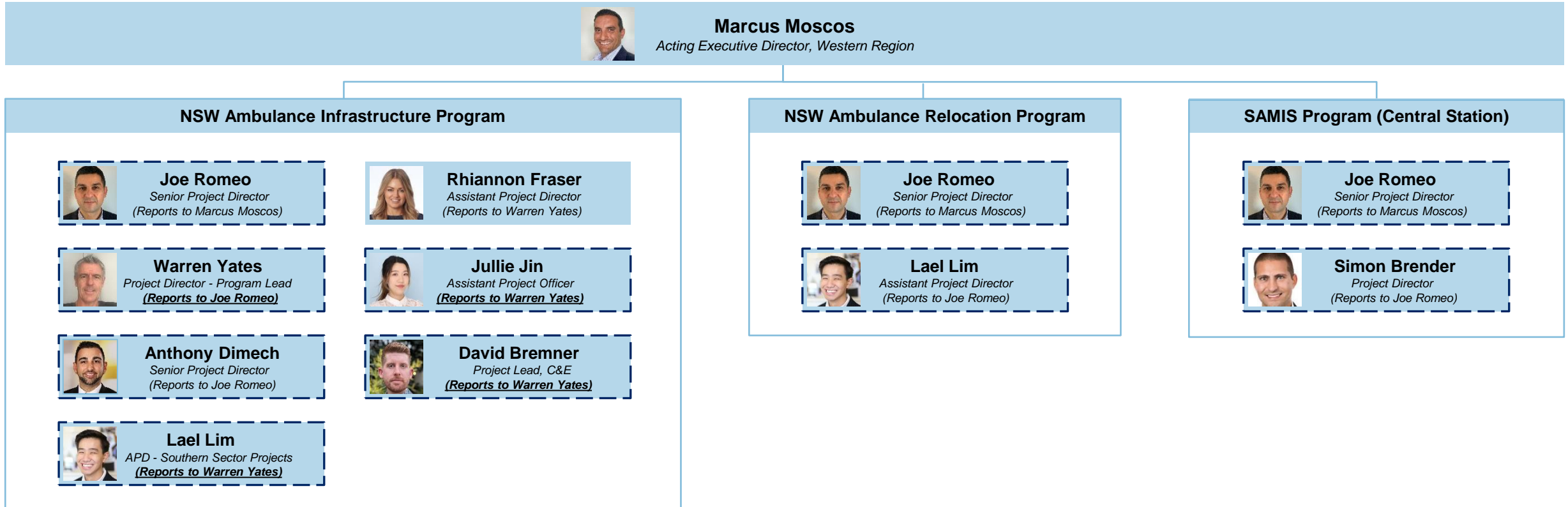
Parramatta Linen Service Relocation

<p>Julian Cook Senior Project Director <i>(Reports to Marcus Moscos)</i></p>
<p>Jeremy Hart Project Director <i>(Reports to Julian Cook)</i></p>

Multiple Projects

 Shared Resource (Main Manager Reporting Line in C&CA / Property & Commercial Advisory)

Western Region | Projects

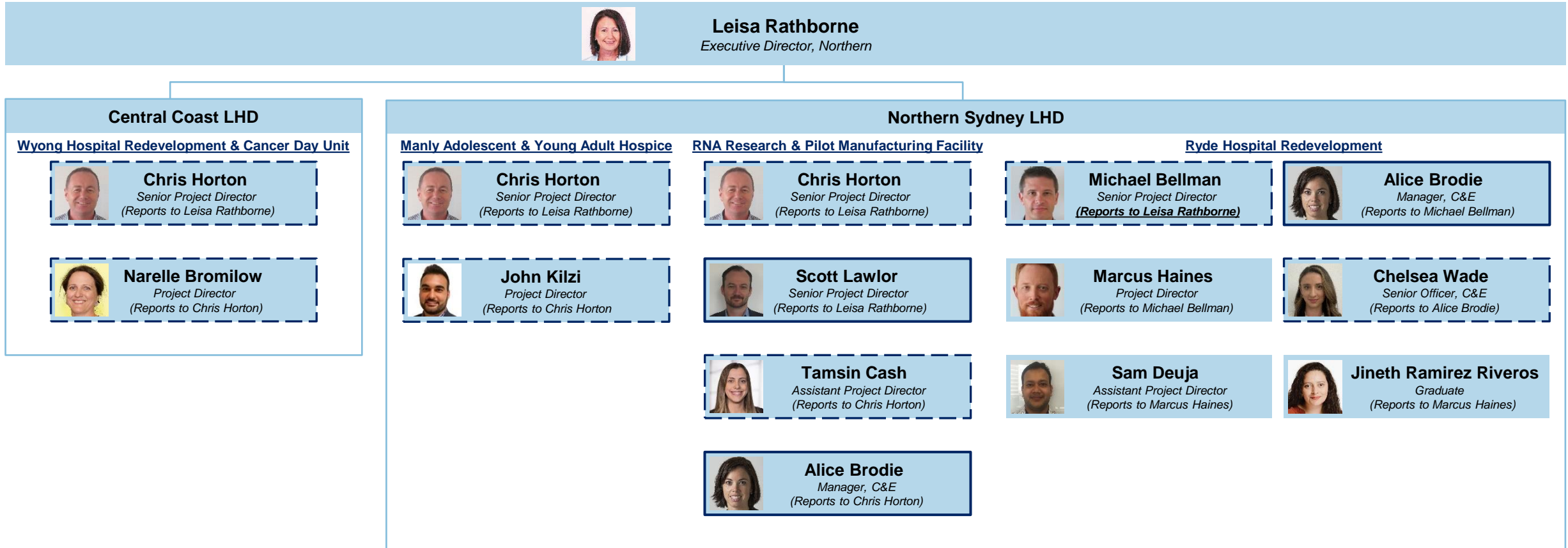


Multiple Projects

Northern Region



Northern Region | Projects



Multiple Projects

Shared Resource (Scott Lawlor: Main Manager Reporting Line in C&CA / Property & Commercial Advisory | Alice Brodie: Main Manager Reporting Line in S&O / C&E)

Northern Region | Projects



Leisa Rathborne
Executive Director, Northern

Sydney LHD

Canterbury Hospital Redevelopment



Hayley Bell
Senior Project Director
(Reports to Leisa Rathborne)



Tamsin Cash
Assistant Project Director
(Reports to Hayley Bell)



Alice Brodie
Manager, C&E
(Reports to Hayley Bell)



Morgan Tallack
Senior Officer, C&E
(Reports to Alice Brodie)

Concord Car Park



Nick Brooker
Senior Project Director
(Reports to Amanda Bock)



Louise Irving
Project Director
(Reports to Nick Brooker)



Prue Tarmizi
Manager, C&E
(Reports to Nick Brooker)



Morgan Tallack
Senior Officer, C&E
(Reports to Prue Tarmizi)

Concord Forensic Mental Health - SWIMHP



Nick Brooker
Senior Project Director
(Reports to Amanda Bock)



Louise Irving
Project Director
(Reports to Nick Brooker)



Prue Tarmizi
Manager, C&E
(Reports to Nick Brooker)



Morgan Tallack
Senior Officer, C&E
(Reports to Prue Tarmizi)

Royal Prince Alfred Hospital Redevelopment




Adrian Timp
Senior Project Director
(Reports to Leisa Rathborne)



Michael Smytheman
Project Director
(Reports to Adrian Timp)



Megan Hart
Project Coordinator
(Reports to Michael Smytheman)



Prue Tarmizi
Manager, C&E
(Reports to Adrian Timp)



Morgan Tallack
Senior Officer, C&E
(Reports to Prue Tarmizi)

 Multiple Projects  Shared Resource (Main Manager Reporting Line in S&O / C&E)

Northern Region | Projects




Leisa Rathborne
Executive Director, Northern

Western Sydney LHD

Blacktown & Mount Druitt Hospitals



Chris Horton
Senior Project Director
(Reports to Leisa Rathborne)



Scott Mcknight
Project Director
(Reports to Chris Horton)



Michelle Delaat
Manager, Project C&E
(Reports to Chris Horton)

Bunya - SWMHIP



Chris Horton
Senior Project Director
(Reports to Leisa Rathborne)




Elise Miller
Project Director
(Reports to Chris Horton)

Cumberland West MH Services Relocation



Chris Skeggs
Senior Project Director
(Reports to Leisa Rathborne)



Hossein Bidgoli
Project Director
(Reports to Chris Skeggs)



Sukhjeet Kaur
Assistant Project Director
(Reports to Hossein Bidgoli)



Michelle Delaat
Manager, Project C&E
(Reports to Chris Skeggs)

Rouse Hill Hospital



Matthew Malone
Senior Project Director
(Reports to Leisa Rathborne)



Katie Babula
Project Director
(Reports to Matthew Malone)



Natasia Seo
Assistant Project Director
(Reports to Katie Babula)



Michelle Delaat
Manager, Project C&E
(Reports to Matthew Malone)

Westmead Redevelopment



Chris Skeggs
Senior Project Director
(Reports to Leisa Rathborne)



Elise Miller
Project Director
(Reports to Chris Skeggs)



Lisa Bannon
Assistant Project Director - PM Role
(Reports to Elise Miller)

Viral Vector



Chris Skeggs
Senior Project Director
(Reports to Leisa Rathborne)



Caleb Teh
Senior Project Director
(Reports to Chris Skeggs)



Rabbie Morkos
Project Director - Kids
(Reports to Chris Skeggs)



Sherrie Rutherford
Project Director - PM Role
(Reports to Caleb Teh)



Natalie Ong
Assistant Project Director
(Reports to Sherrie Rutherford)



Donson Phetrasy
Project Lead, C&E
(Reports to Chris Skeggs)

 Multiple Projects

Northern Region | Projects



Leisa Rathborne
Executive Director, Northern

South Eastern Sydney LHD

Prince of Wales Redevelopment Randwick



Gavin Thompson
Senior Project Director
(Reports to Leisa Rathborne)



Scott Mcknight
Project Director
(Reports to Gavin Thompson)



Peta Gismondo
Manager, C&E
(Reports to Gavin Thompson)



Chelsea Wade
Senior Officer, C&E
(Reports to Peta Gismondo)


St George Redevelopment Stage 3



Gavin Thompson
Senior Project Director
(Reports to Leisa Rathborne)



Tim Shoolman
Senior Project Director
(Reports to Gavin Thompson)



Silvia Queiroz Campos
Project Coordinator
(Reports to Tim Shoolman)

Sydney Children's Hospital Network

Randwick



Gavin Thompson
Senior Project Director
(Reports to Leisa Rathborne)



Kevin Maclennan
Senior Project Director
(Reports to Gavin Thompson)



Peta Gismondo
Manager, C&E
(Reports to Gavin Thompson)




Chelsea Wade
Senior Officer, C&E
(Reports to Peta Gismondo)


Westmead



Chris Skeggs
Senior Project Director
(Reports to Leisa Rathborne)



Caleb Teh
Senior Project Director
(Reports to Chris Skeggs)



Anna Chernih
Project Director - PSB
(Reports to Caleb Teh)

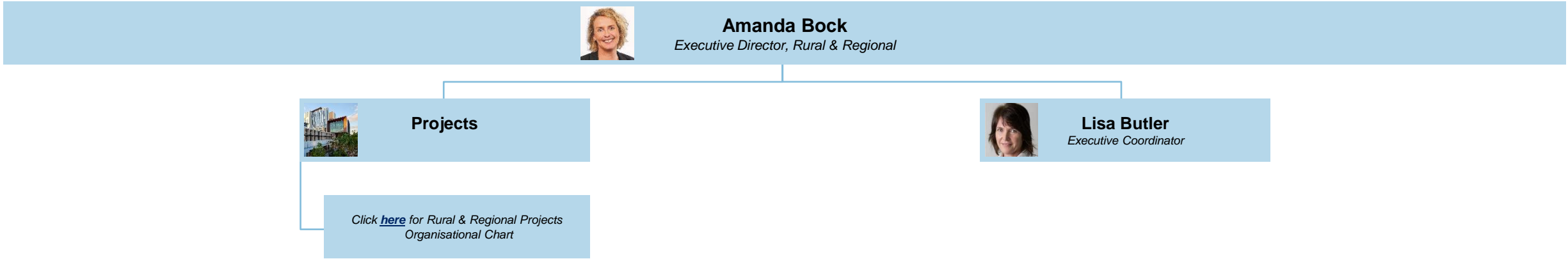


Lisa Bannon
Assistant Project Director - MSCP
(Reports to Caleb Teh)

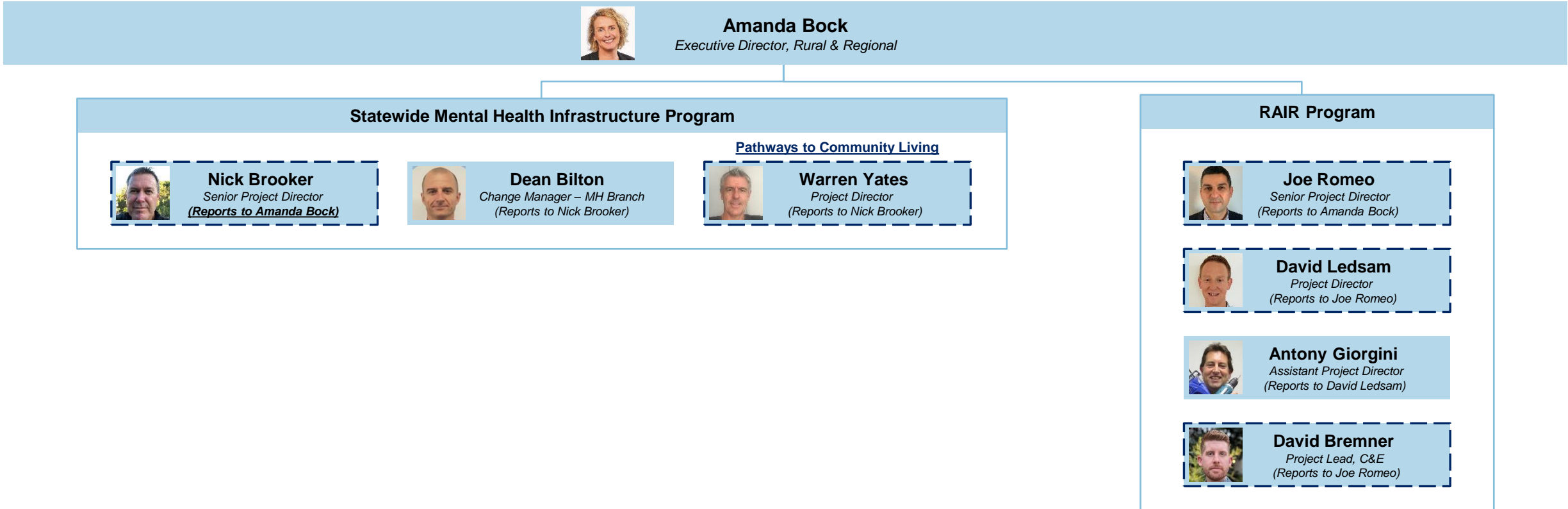


Donson Phetrasy
Project Lead, C&E
(Reports to Caleb Teh)

Rural & Regional Region



Rural & Regional Region | Projects



Multiple Projects

Rural & Regional Region | Projects



Amanda Bock
Executive Director, Rural & Regional

Albury Wodonga Health Service

Albury Campus Redevelopment



Hayley Bell
Senior Project Director
(Reports to Leisa Rathborne)



Vacant
Manager, C&E
(Reports to Hayley Bell)



Michael Bellman
Senior Project Director
(Reports to Leisa Rathborne)



Eliza Milenkovic
Senior Officer, C&E
(Reports to Manager, C&E)



Ian Gibson
Project Director
(Reports to Hayley Bell)

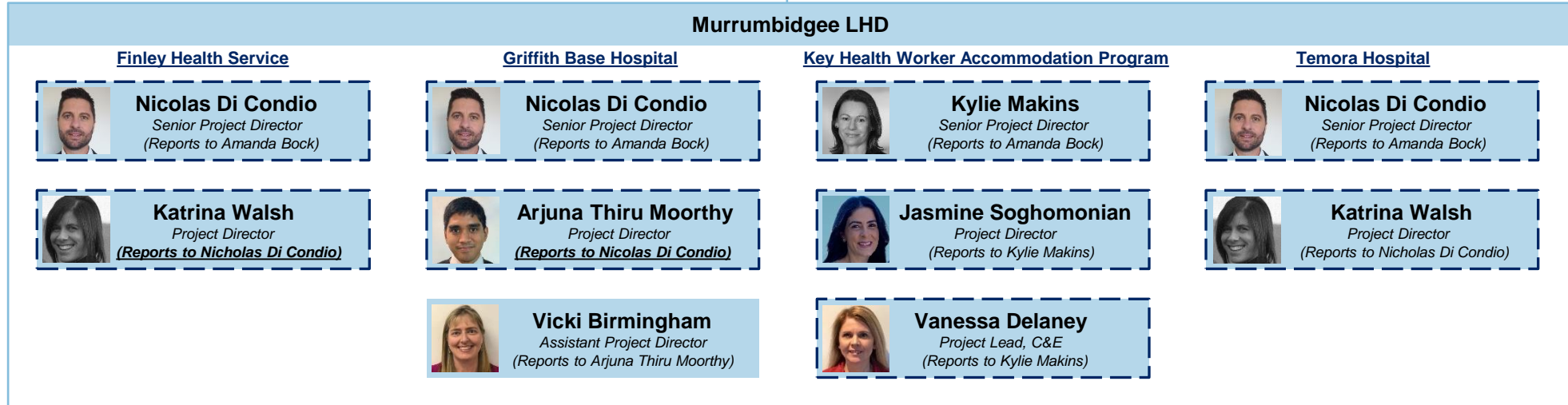


Clare Barraclough
Assistant Project Director
(Reports to Ian Gibson)

Rural & Regional Region | Projects



Amanda Bock
Executive Director, Rural & Regional



 Multiple Projects

Rural & Regional Region | Projects



Amanda Bock
Executive Director, Rural & Regional

Western NSW LHD


Bathurst Hospital




Kylie Makins
Senior Project Director
(Reports to Amanda Bock)



Marty Smith
Project Director
(Reports to Kylie Makins)



Annabel Dunlop
Project Lead, C&E
(Reports to Kylie Makins)




Eshan Wanigasingha
Graduate
(Reports to Marty Smith)


Blayney Multi Purpose Service



Kylie Makins
Senior Project Director
(Reports to Amanda Bock)



Arjuna Thiru Moorthy
Project Director
(Reports to Kylie Makins)




Vanessa Delaney
Project Lead, C&E
(Reports to Kylie Makins)


Cowra Hospital



Kylie Makins
Senior Project Director
(Reports to Amanda Bock)



Marty Smith
Project Director
(Reports to Kylie Makins)



Annabel Dunlop
Project Lead, C&E
(Reports to Kylie Makins)

Dubbo Drug & Alcohol Rehabilitation Facility



Kylie Makins
Senior Project Director
(Reports to Amanda Bock)



Melissa Foong
Project Director
(Reports to Kylie Makins)

 Multiple Projects

Rural & Regional Region | Projects



Amanda Bock
Executive Director, Rural & Regional

Southern NSW LHD

Batemans Bay Health One




Matthew Malone
Senior Project Director
(Reports to Amanda Bock)



Orestes Lomis
Project Director
(Reports to Matthew Malone)



David Ledsam
Project Director
(Reports to Matthew Malone)



Penny Cox
Project Lead, C&E
(Reports to Mathew Malone)




Eliza Milenkovic
Senior Officer, C&E
(Reports to Penny Cox)

Bombala Multipurpose Service



Matthew Malone
Senior Project Director
(Reports to Amanda Bock)



Anthony Dimech
Senior Project Director
(Reports to Matthew Malone)




Rita Corbett
Project Director
(Reports to Anthony Dimech)

Eurobodalla Regional Hospital




Matthew Malone
Senior Project Director
(Reports to Amanda Bock)



Orestes Lomis
Project Director
(Reports to Matthew Malone)



David Ledsam
Project Director
(Reports to Matthew Malone)



Penny Cox
Project Lead, C&E
(Reports to Matthew Malone)




Eliza Milenkovic
Senior Officer, C&E
(Reports to Penny Cox)


Goulburn Hospital



Matthew Malone
Senior Project Director
(Reports to Amanda Bock)



David Ledsam
Project Director
(Reports to Matthew Malone)



Penny Cox
Project Lead, C&E
(Reports to Mathew Malone)

Key Health Worker Accommodation Program




Kylie Makins
Senior Project Director
(Reports to Amanda Bock)



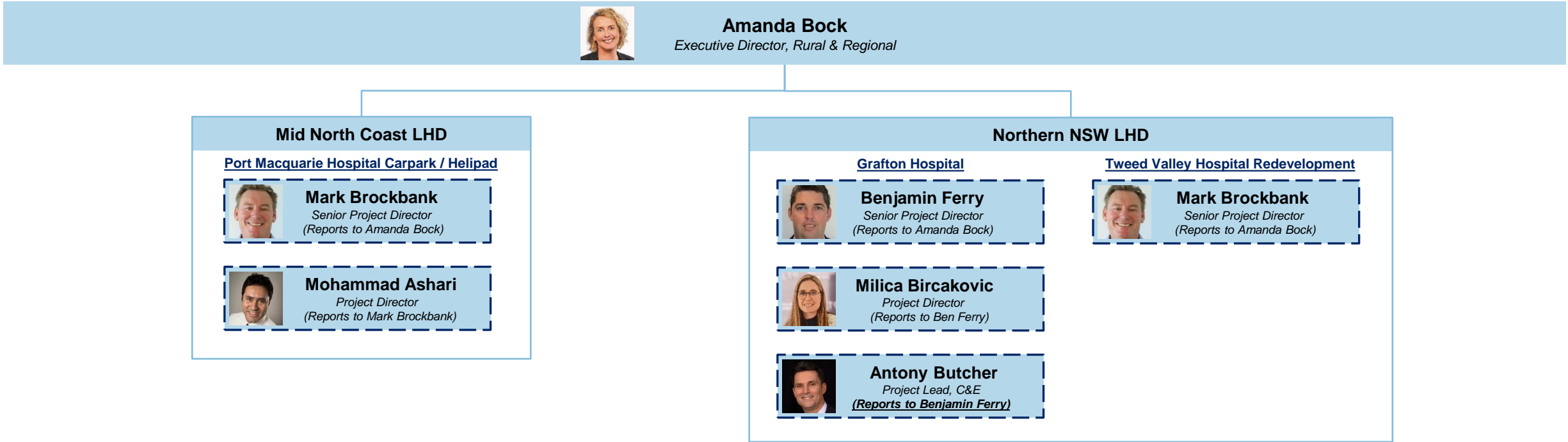
Jasmine Soghomonian
Project Director
(Reports to Kylie Makins)



Vanessa Delaney
Project Lead, C&E
(Reports to Kylie Makins)

 Multiple Projects

Rural & Regional Region | Projects



Multiple Projects

Rural & Regional Region | Projects



Amanda Bock
Executive Director, Rural & Regional

Hunter New England (New England) LHD

Glen Innes Hospital



Nicholas Rayner
Senior Project Director
(Reports to Amanda Bock)

Gunnedah Hospital



Nick Brooker
Senior Project Director
(Reports to Amanda Bock)

Forster / Tuncurry



Mark Brockbank
Senior Project Director
(Reports to Amanda Bock)

Moree Hospital



Nicholas Rayner
Senior Project Director
(Reports to Amanda Bock)

Tamworth MH Unit (Banksia)



Nick Brooker
Senior Project Director
(Reports to Amanda Bock)



Milica Bircakovic
Project Director
(Reports to Nicholas Rayner)



Lachlan Falconer-Adams
Project Director
(Reports to Nick Brooker)



Antony Butcher
Project Lead, C&E
(Reports to Mark Brockbank)



Mohammad Ashari
Project Director
(Reports to Nicholas Rayner)



Lachlan Falconer-Adams
Project Director
(Reports to Nick Brooker)

Manning Base Hospital



Kylie Neville
Project Lead, C&E
(Reports to Nicholas Rayner)



Kylie Neville
Project Lead, C&E
(Reports to Nick Brooker)



Mark Brockbank
Senior Project Director
(Reports to Amanda Bock)



Kylie Neville
Project Lead, C&E
(Reports to Nicholas Rayner)



Antony Butcher
Project Lead, C&E
(Reports to Nick Brooker)



Milica Bircakovic
Project Director
(Reports to Mark Brockbank)



Antony Butcher
Project Lead, C&E
(Reports to Mark Brockbank)

 Multiple Projects

Rural & Regional Region | Projects



Amanda Bock
Executive Director, Rural & Regional

Hunter New England (Newcastle & Hunter) LHD

Cessnock Hospital



Nicholas Rayner
Senior Project Director
(Reports to Amanda Bock)



Bronwyn Chalker
Project Director
(Reports to Nicholas Rayner)



Linda Brandon
Manager, Project C&E
(Reports to Nicholas Rayner)



Alana Nixon
C&E Officer
(Reports to Linda Brandon)

John Hunter Health & Innovation Precinct



Mark Brockbank
Senior Project Director
(Reports to Amanda Bock)



Scott Liddell
Project Director
(Reports to Mark Brockbank)



Peta Cooper
Manager, C&E
(Reports to Mark Brockbank)



Alana Nixon
C&E Officer
(Reports to Peta Cooper)



Nicholas Rayner
Senior Project Director
(Reports to Mark Brockbank)



Lauren Stocks
Project Director
(Reports to Nicholas Rayner)



Narelle Bromilow
Project Director
(Reports to Mark Brockbank)

Maitland Mental Health Expansion



Nicolas Di Condio
Senior Project Director
(Reports to Amanda Bock)



Melissa Foong
Project Director
(Reports to Nicolas Di Condio)



Linda Brandon
Manager, Project C&E
(Reports to Nicolas Di Condio)



Nicolas Di Condio
Senior Project Director
(Reports to Amanda Bock)



Melissa Foong
Project Director
(Reports to Nicolas Di Condio)



Linda Brandon
Manager, Project C&E
(Reports to Nicolas Di Condio)

Muswellbrook Hospital



Nicolas Di Condio
Senior Project Director
(Reports to Amanda Bock)



Melissa Foong
Project Director
(Reports to Nicolas Di Condio)



Peta Cooper
Manager, C&E
(Reports to Nicolas Di Condio)



Alana Nixon
C&E Officer
(Reports to Peta Cooper)

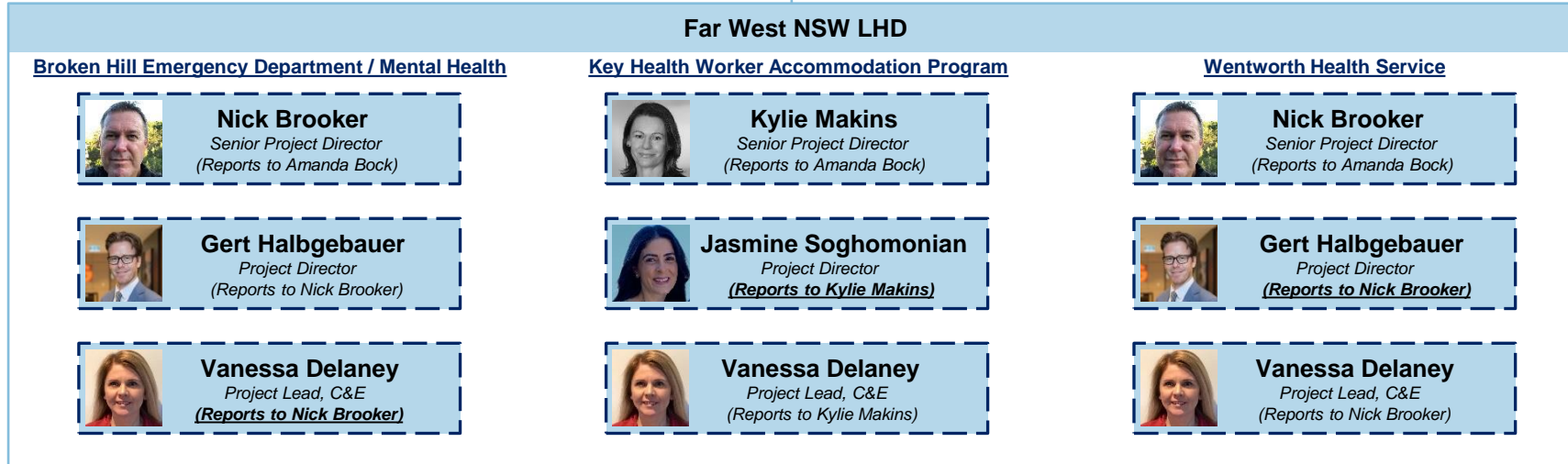
Maitland Community Health

Multiple Projects

Rural & Regional Region | Projects

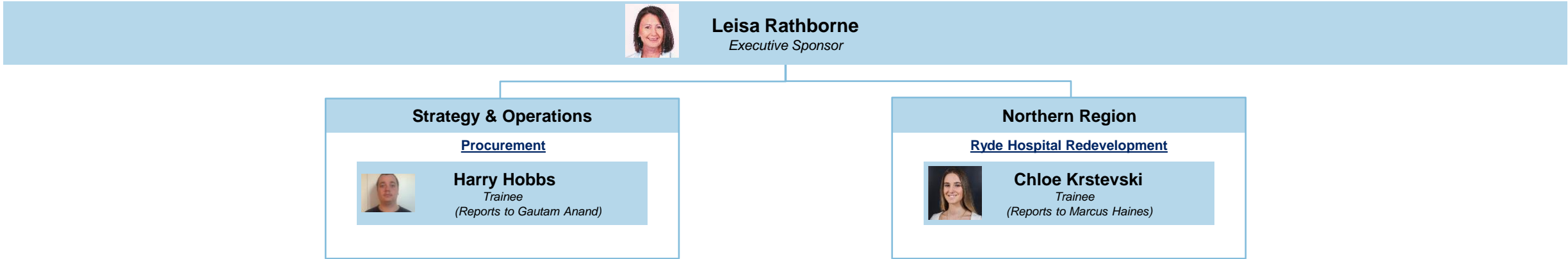


Amanda Bock
Executive Director, Rural & Regional



 Multiple Projects

NSW Government Infrastructure Trainee Program



Staff Currently Unavailable at HI

The below references staff currently unavailable at HI. If you require any further information, please contact either People & Culture or the relevant Executive Director.



Andrew Gill
Principal Analyst, Economic Advisory

C&CA / Economic & Health Facility Advisory
External secondment until January 2025



Adrien Wu
Project Director

Northern Region
On leave until July 2024



Nana Wickramatilake
Senior Legal Officer

S&O / Legal
On leave until December 2024



Natalie Evans
Executive Coordinator

Strategy & Operations
On leave until February 2025



Jennifer Daylight
Manager, Aboriginal Outcomes

Strategy & Operations
On external secondment until June 2025

