

HEALTH INFRASTRUCTURE

Organisation Chart – From 2 April 2024

Capital and Commercial Advisory structure current to 30 June 2024

hinfra.health.nsw.gov.au

Health Infrastructure (HI) Organisation Chart

1. The Organisation Chart represents the entire organisation and is primarily arranged by:

- **Functions**, further categorised by Directors and their portfolios via hyperlink.
- **Regions**, further categorised by Projects (primarily under Local Health Districts) via hyperlink.

2. The Organisation Chart is updated and published:


- In accordance with HI's approved establishment.
- Through vetting the structure with HI's Leadership Team.
- On a monthly basis.


3. The Organisation Chart is version controlled and:

- This version is effective **2 April 2024**. Organisational changes occurring after this date will reflect in the next month's publication.
- No other organisation chart will be recognised at a business level.


4. The Organisation Chart is authored by People & Culture. For any questions, please contact them via [email](#).

5. Legends are defined at the bottom of pages where applicable:

E.g.  Shared Resource

 Main Manager Reporting Line (shared resource between Regions and Functional Business Units)

6. Use the buttons in the top right to navigate throughout the document:

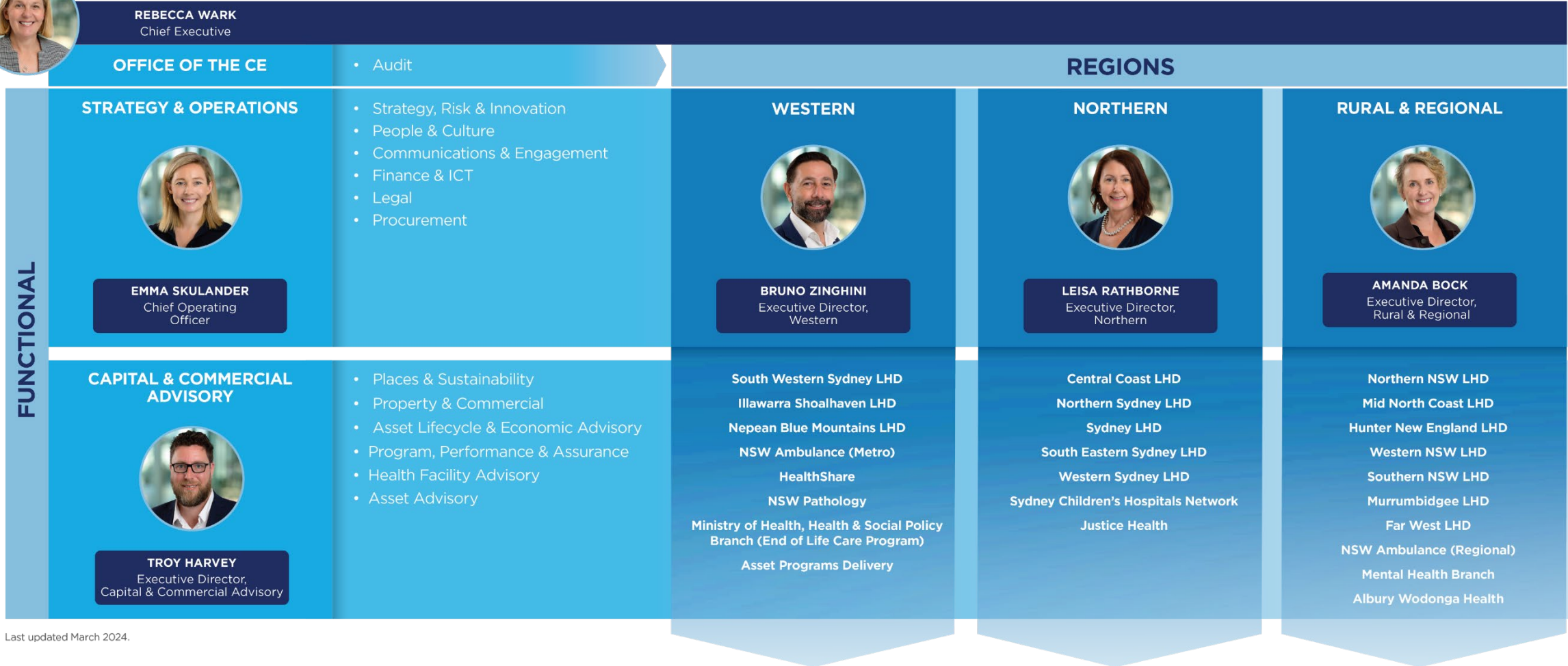


- Back to previous slide
- Back to start of section
- Back to the beginning
- Forward to next slide

7. For HI Trainees and staff on leave/secondment, click [here](#).

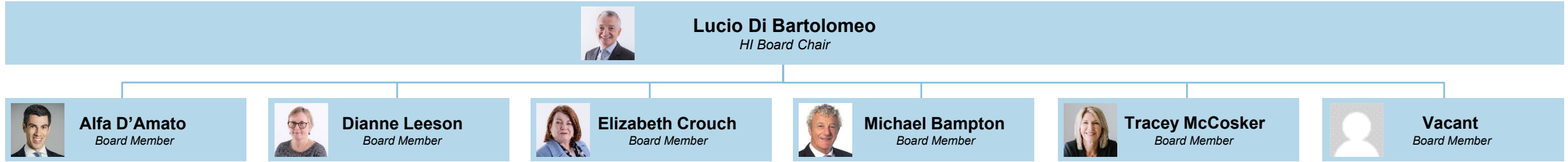


REBECCA WARK
Chief Executive

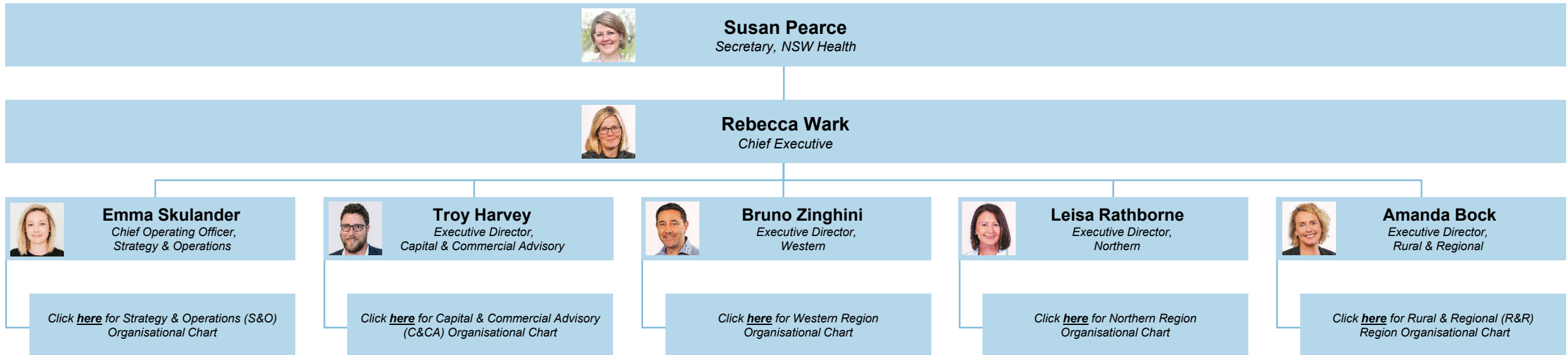


Last updated March 2024.

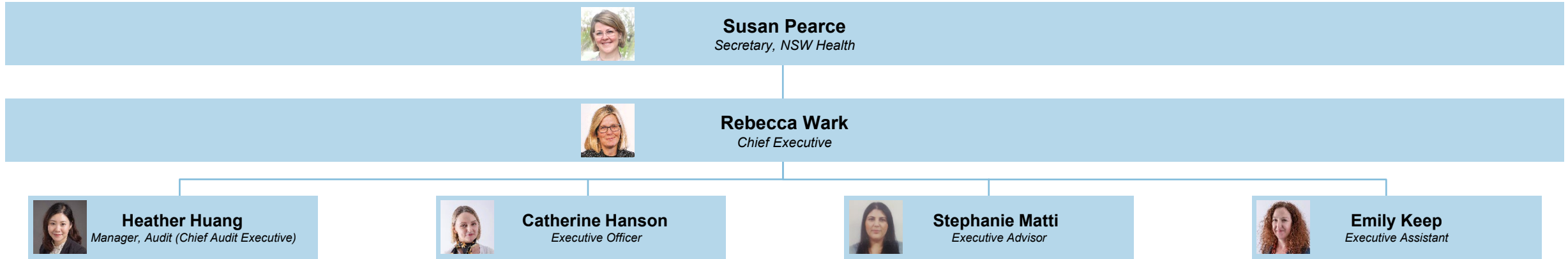
HI Board



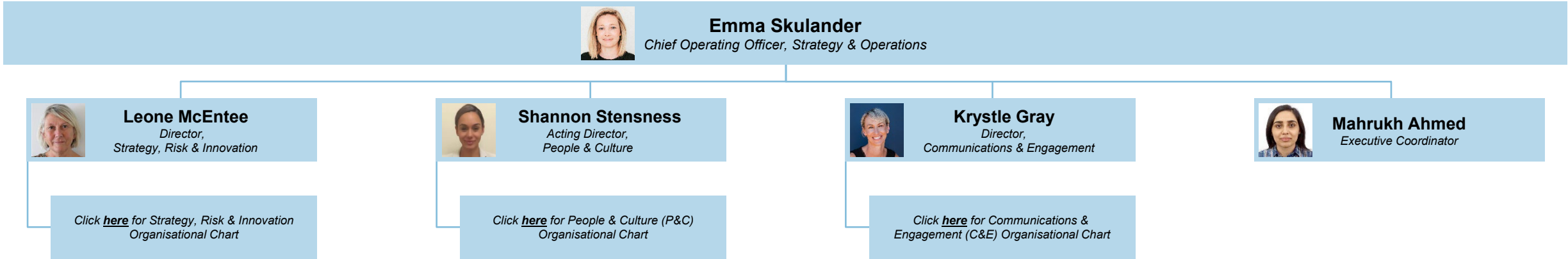
Office of the Chief Executive ⁽¹⁾



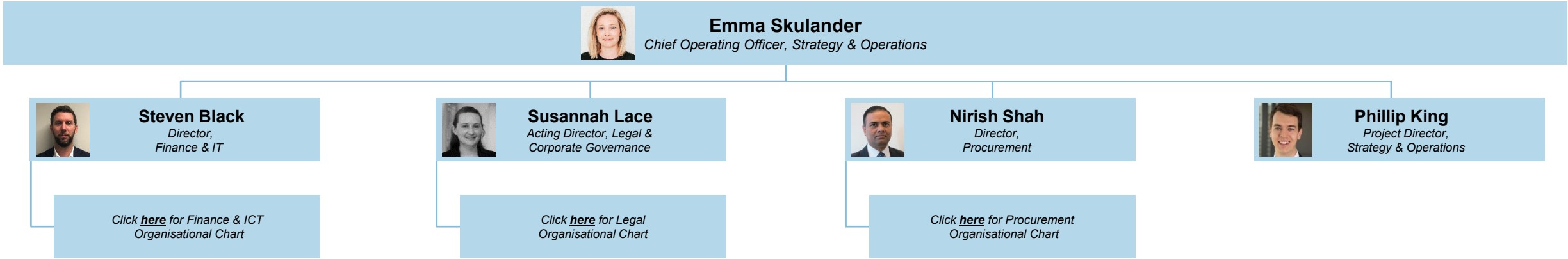
Office of the Chief Executive (2)



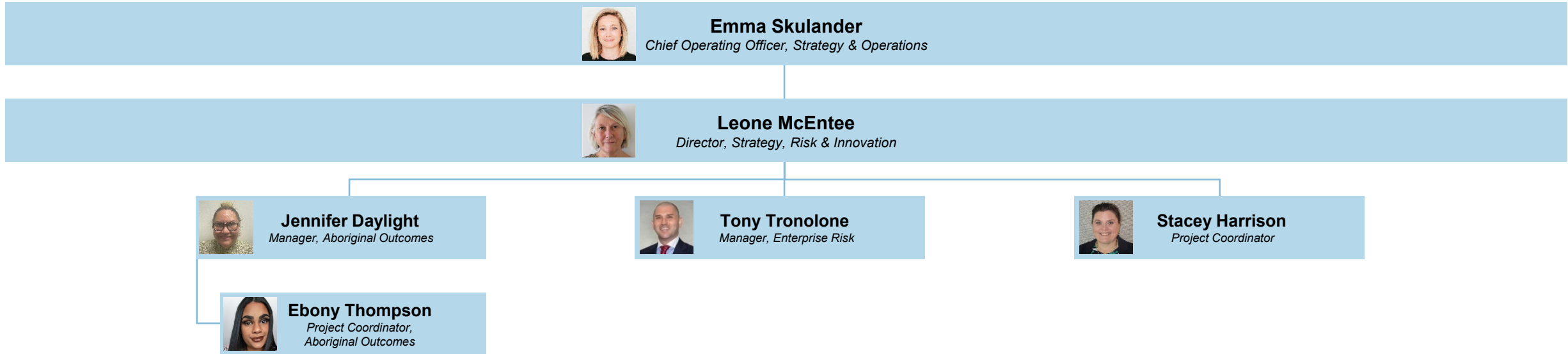
Strategy & Operations (1)



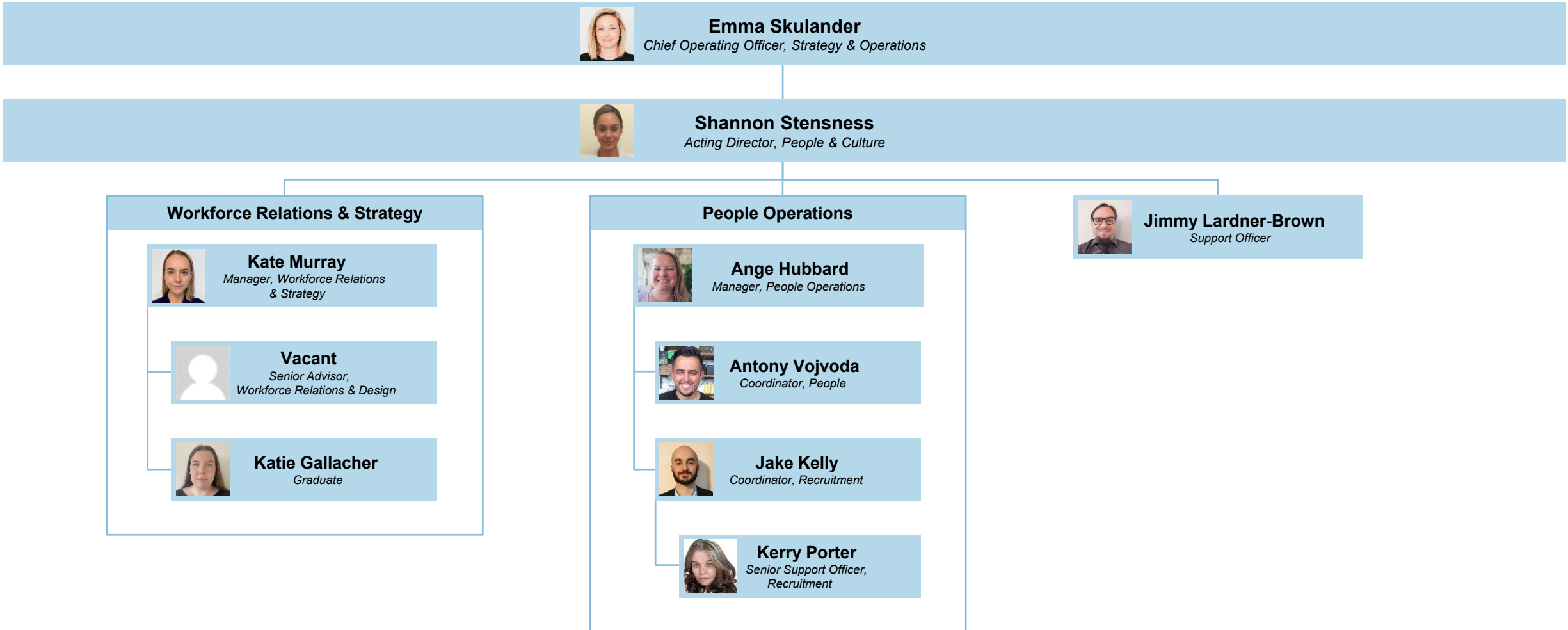
Strategy & Operations (2)



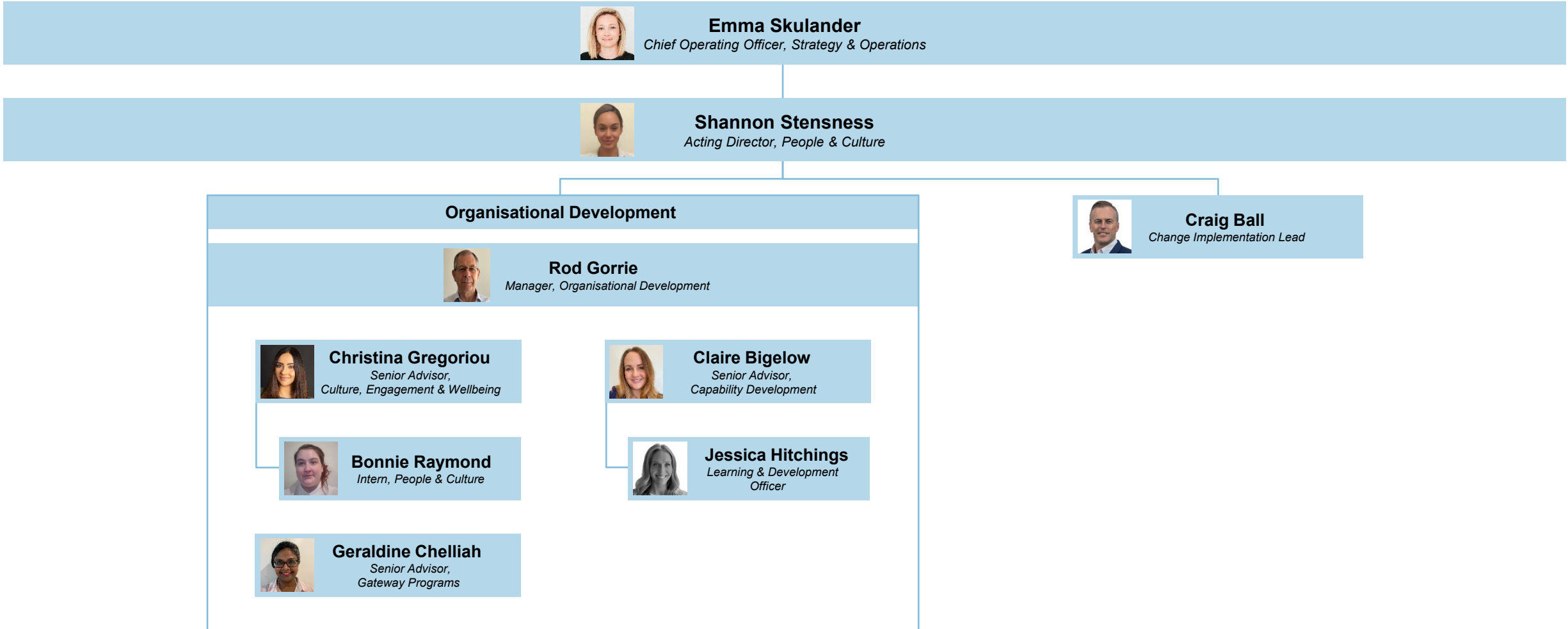
Strategy & Operations | Strategy, Risk & Innovation



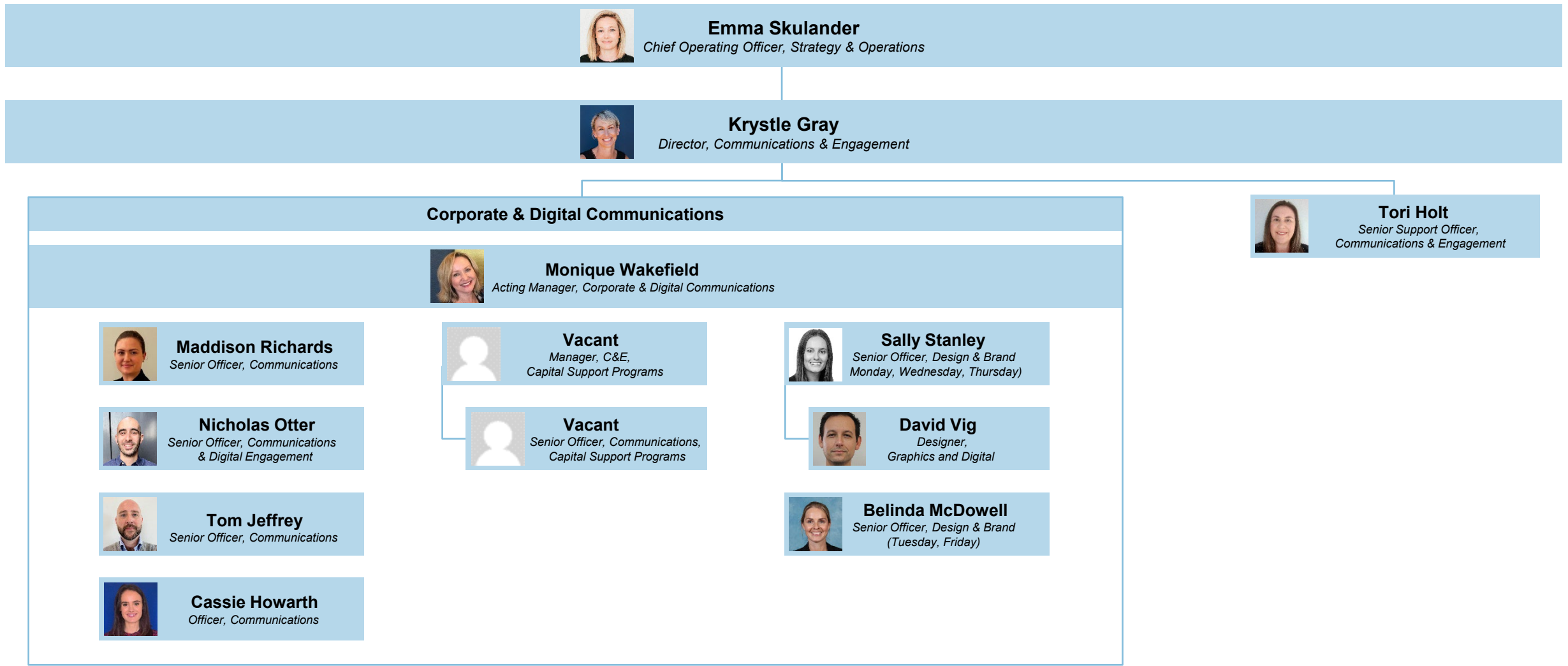
Strategy & Operations | People & Culture ⁽¹⁾



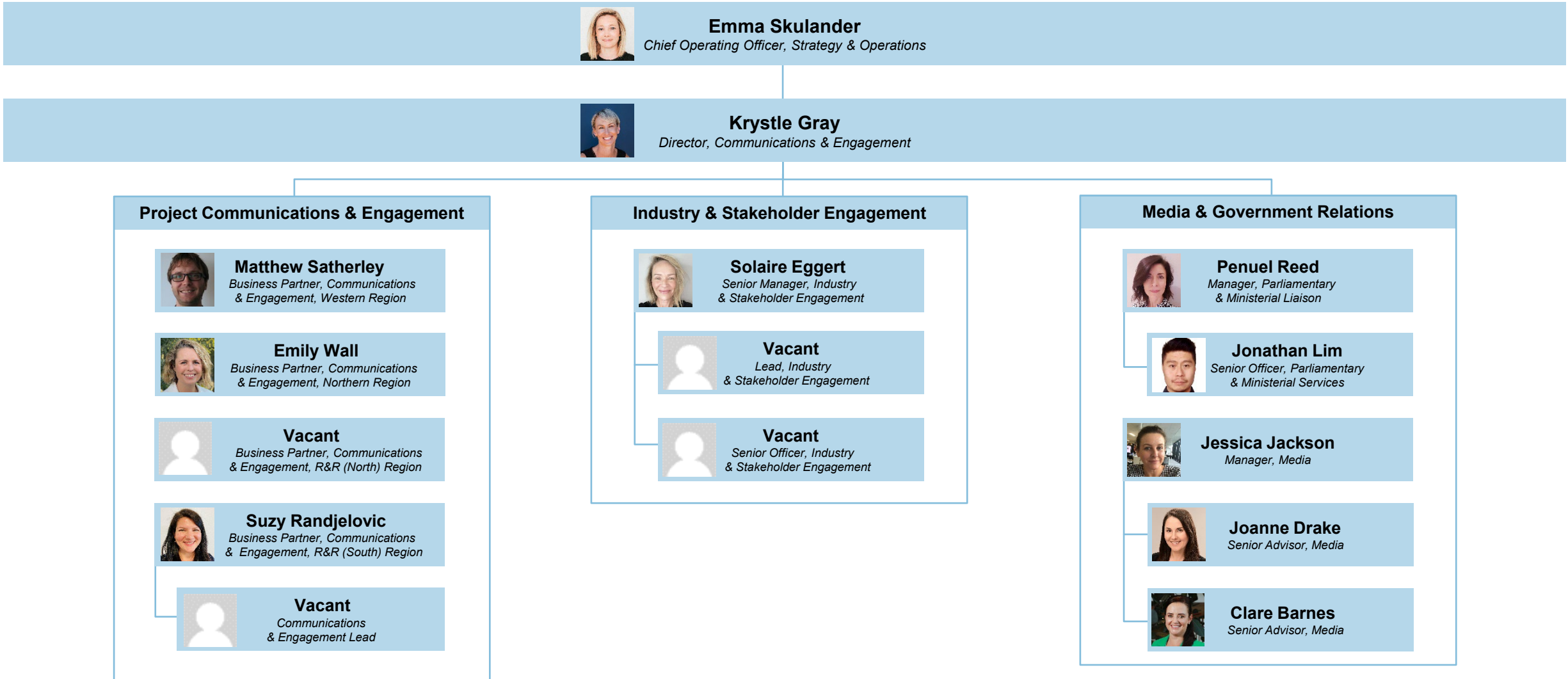
Strategy & Operations | People & Culture (2)



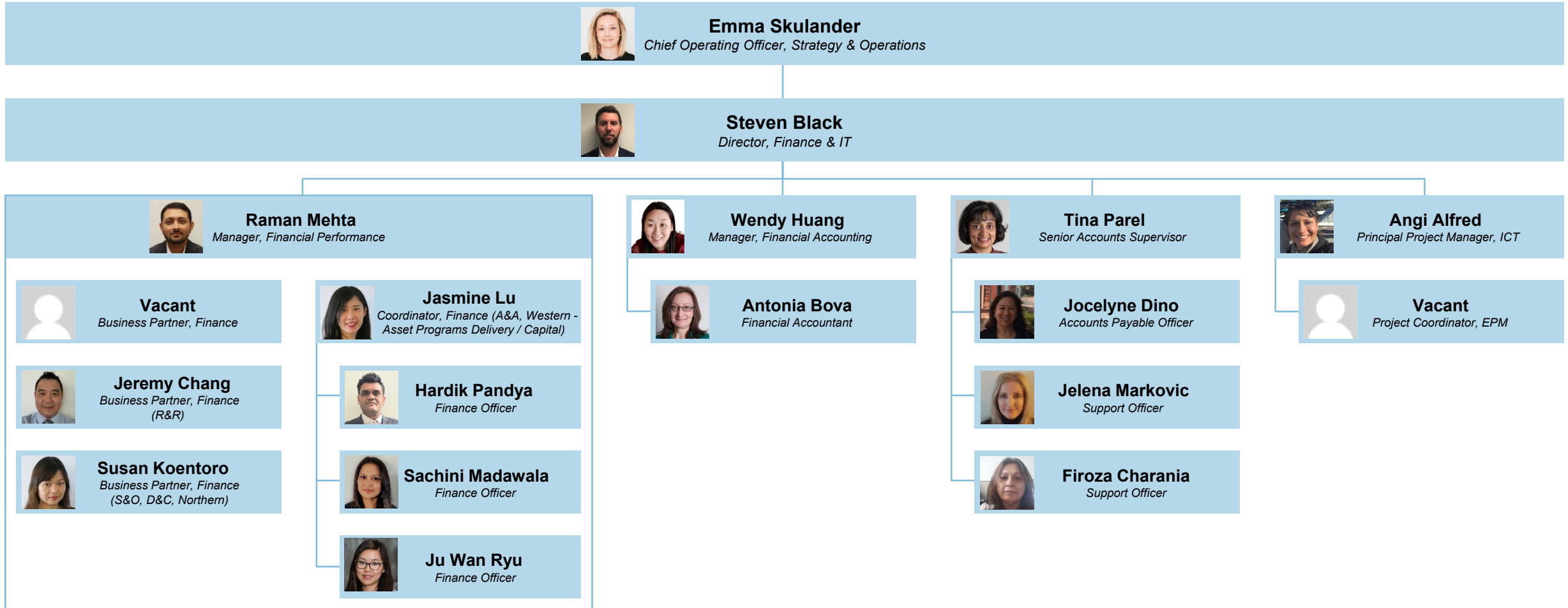
Strategy & Operations | Communications & Engagement ⁽¹⁾



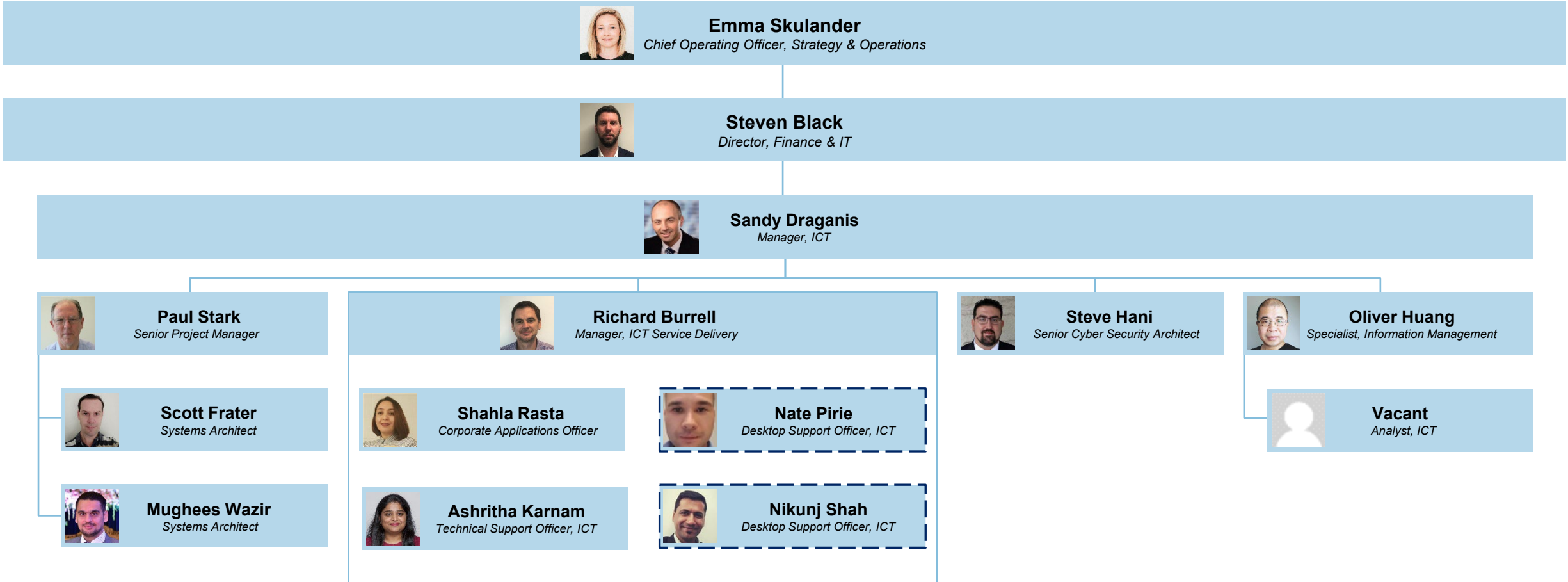
Strategy & Operations | Communications & Engagement (2)



Strategy & Operations | Finance & ICT ⁽¹⁾

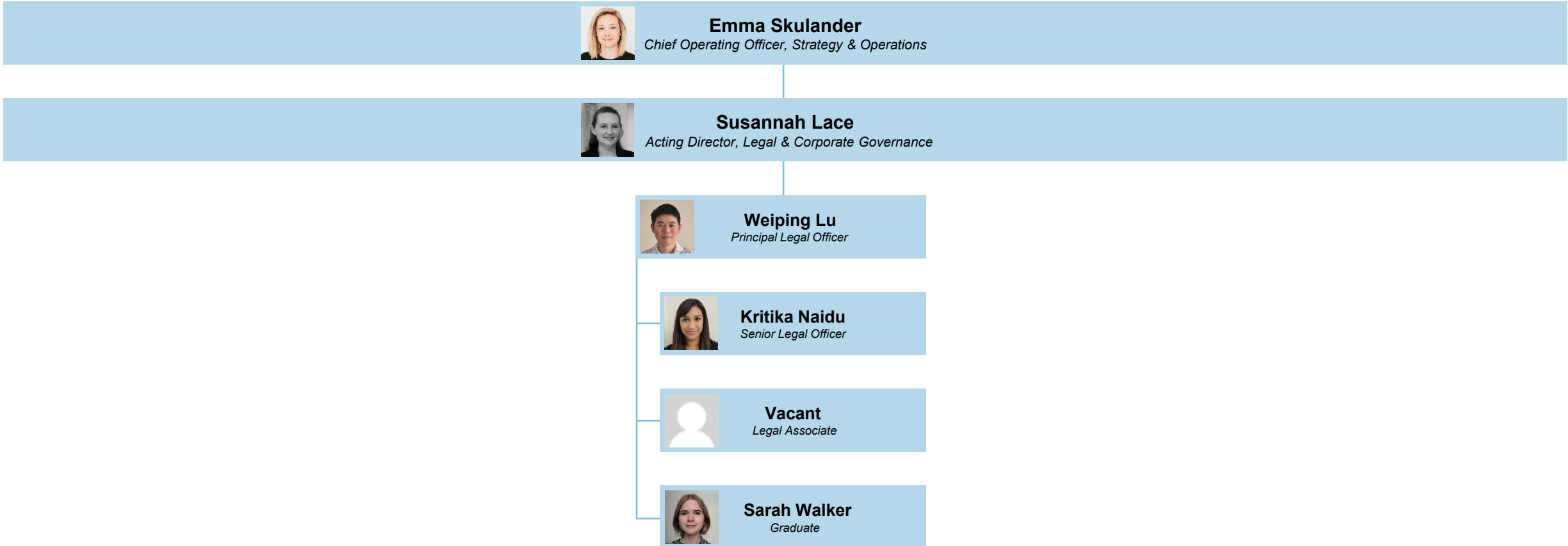


Strategy & Operations | Finance & ICT ⁽²⁾

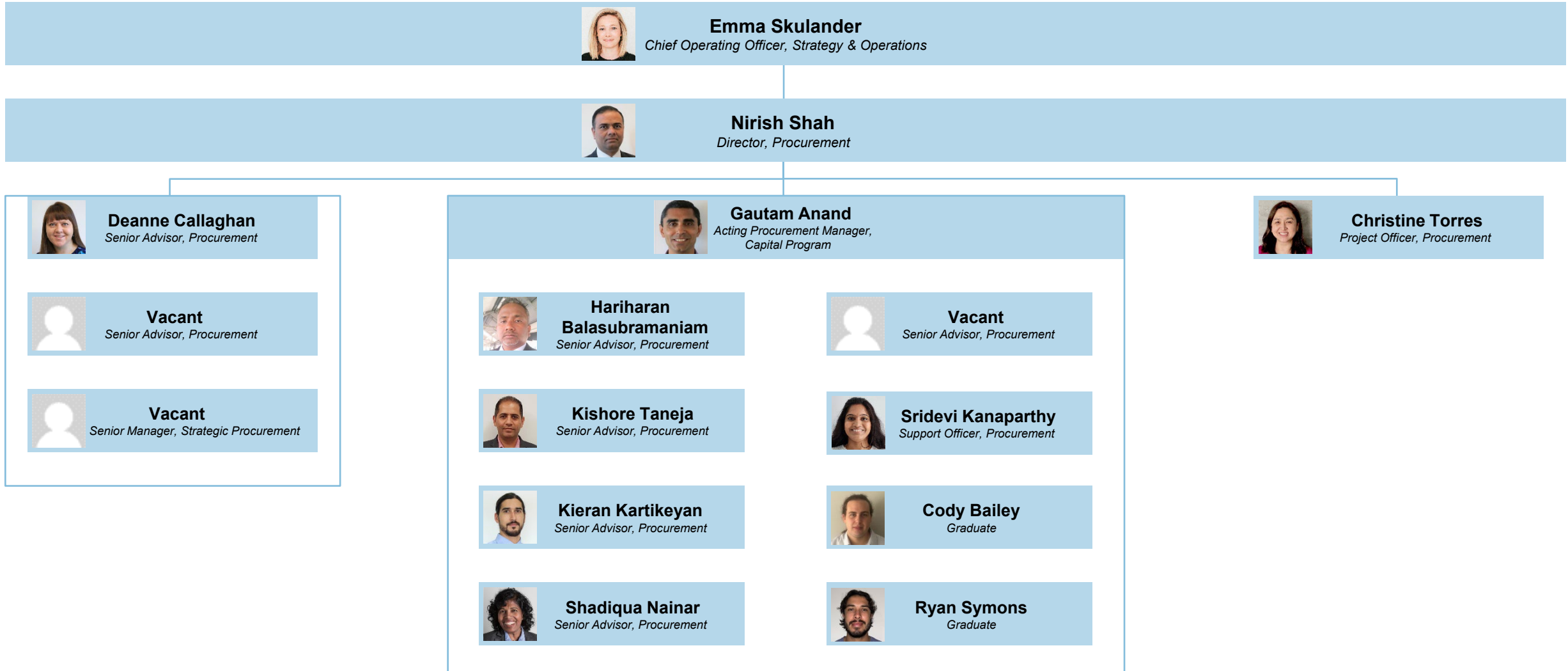


Resource from eHealth

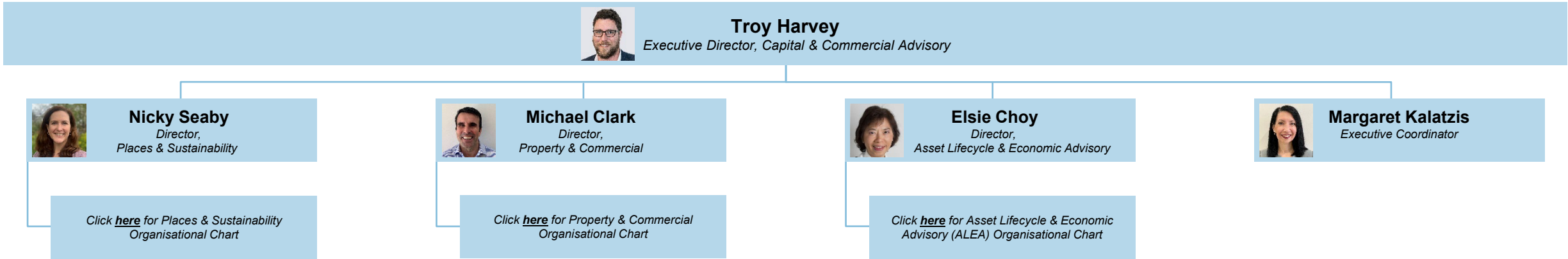
Strategy & Operations | Legal



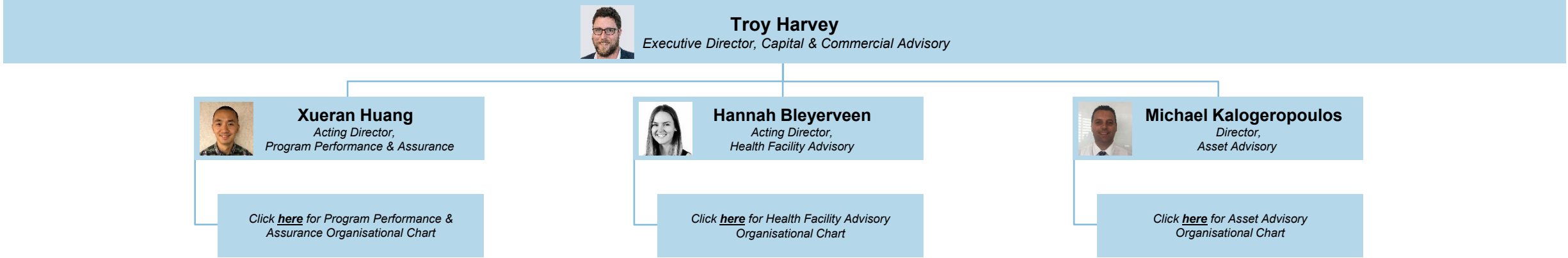
Strategy & Operations | Procurement



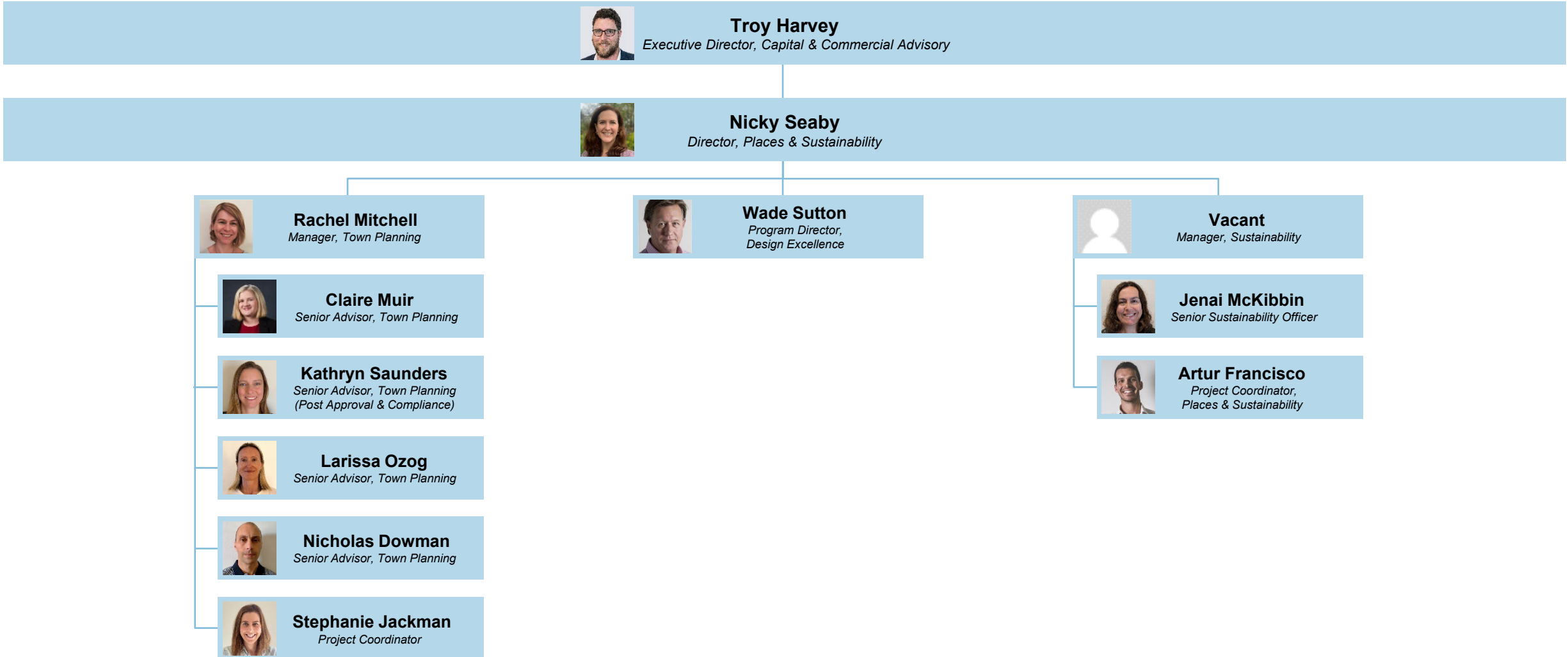
Capital & Commercial Advisory ⁽¹⁾



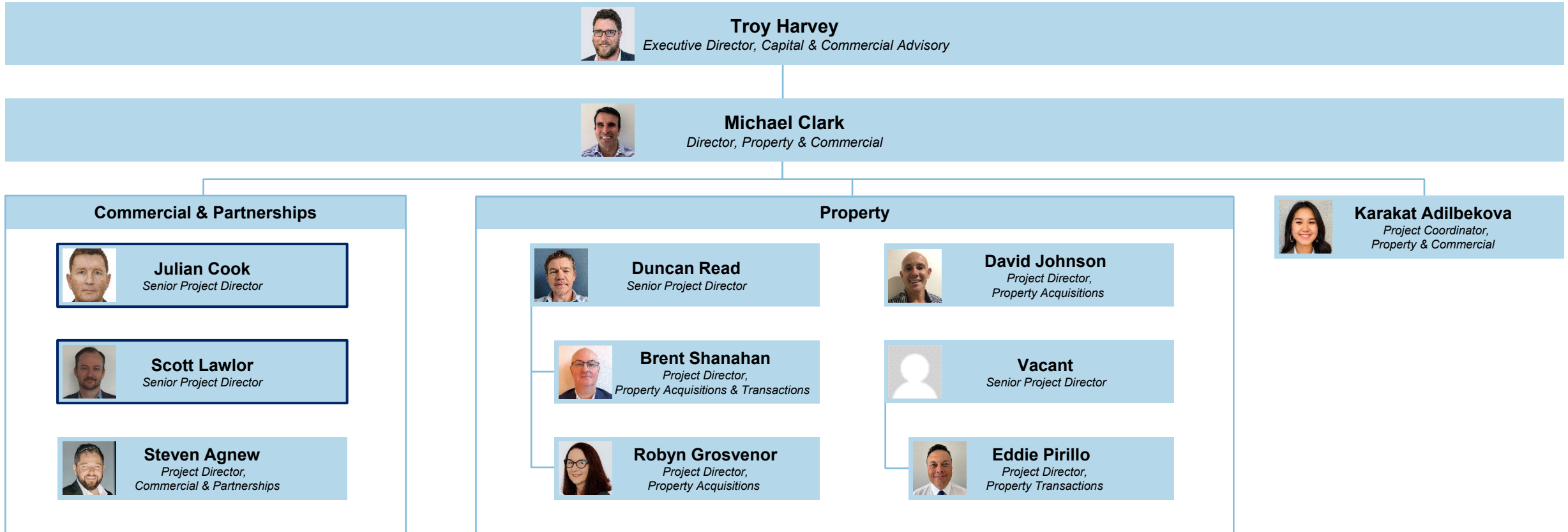
Capital & Commercial Advisory (2)



Capital & Commercial Advisory | Places & Sustainability

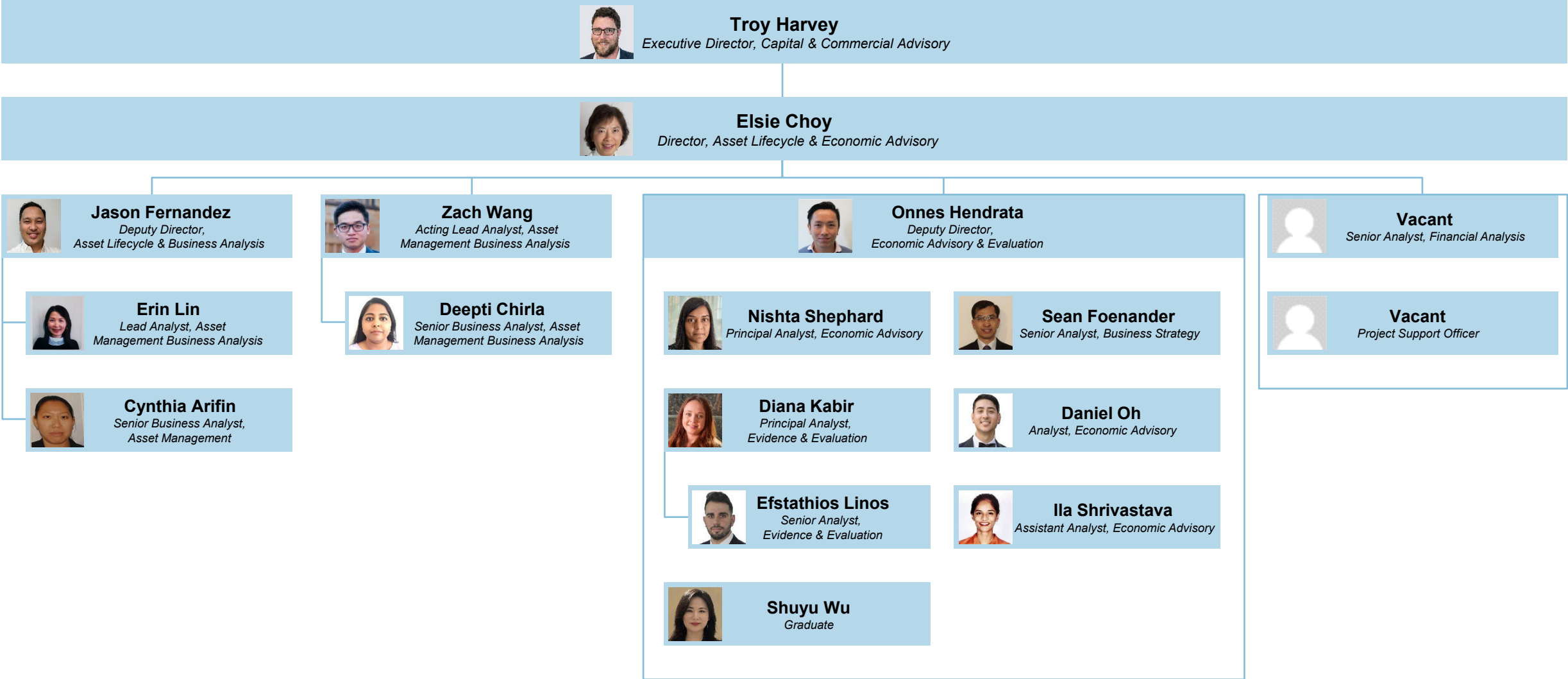


Capital & Commercial Advisory | Property & Commercial

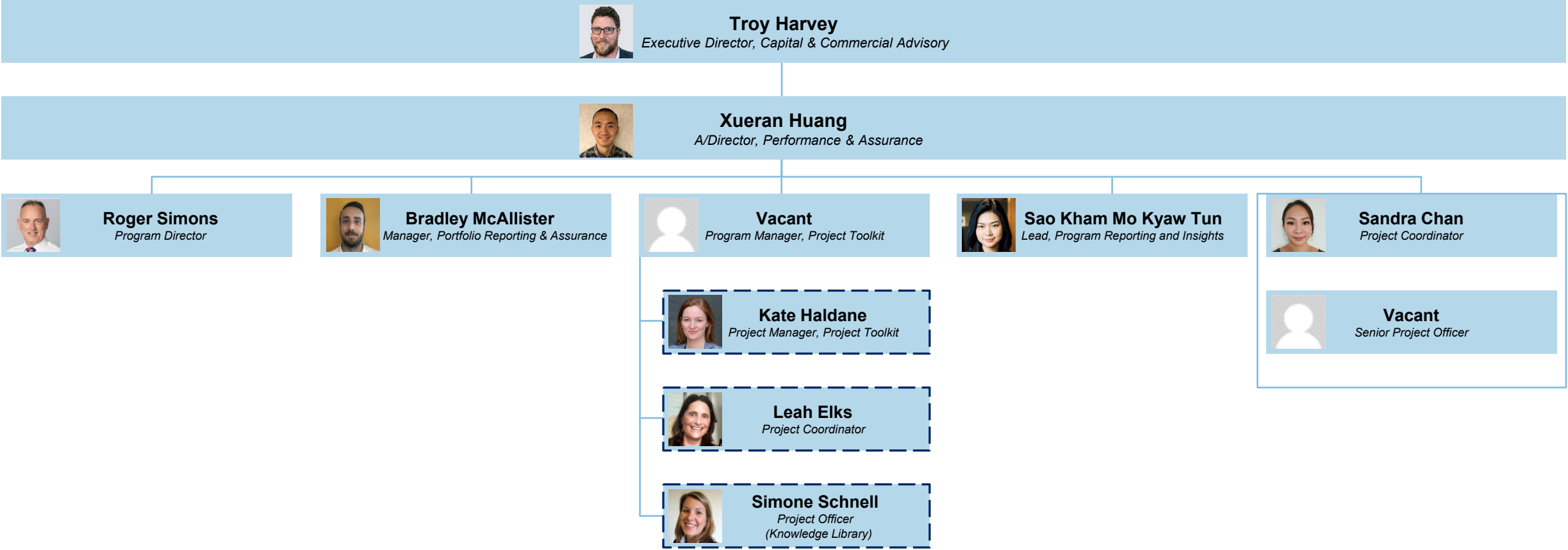


Main Manager Reporting Line (Shared Resource – See Western Region for Julian Cook / Northern Region for Scott Lawlor)

Capital & Commercial Advisory | Asset Lifecycle & Economic Advisory

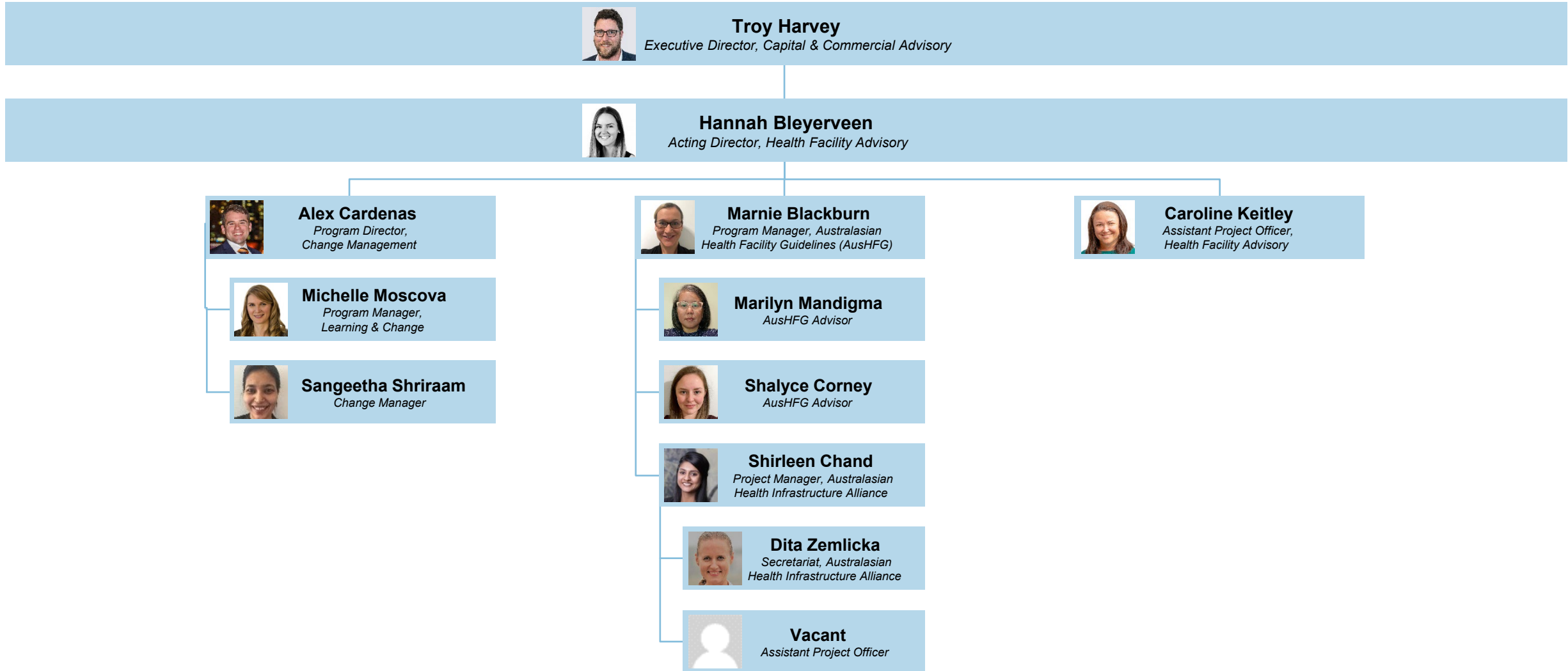


Capital & Commercial Advisory | Program Performance & Assurance

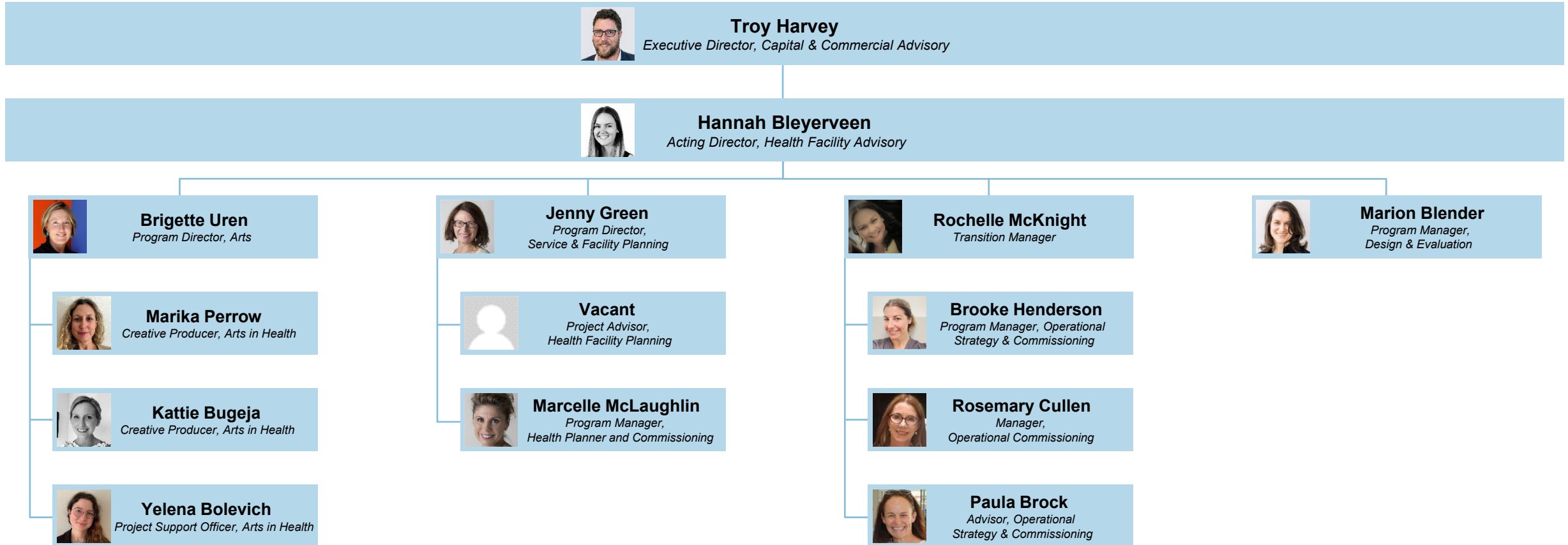


Reports to Hannah Bleyerveen

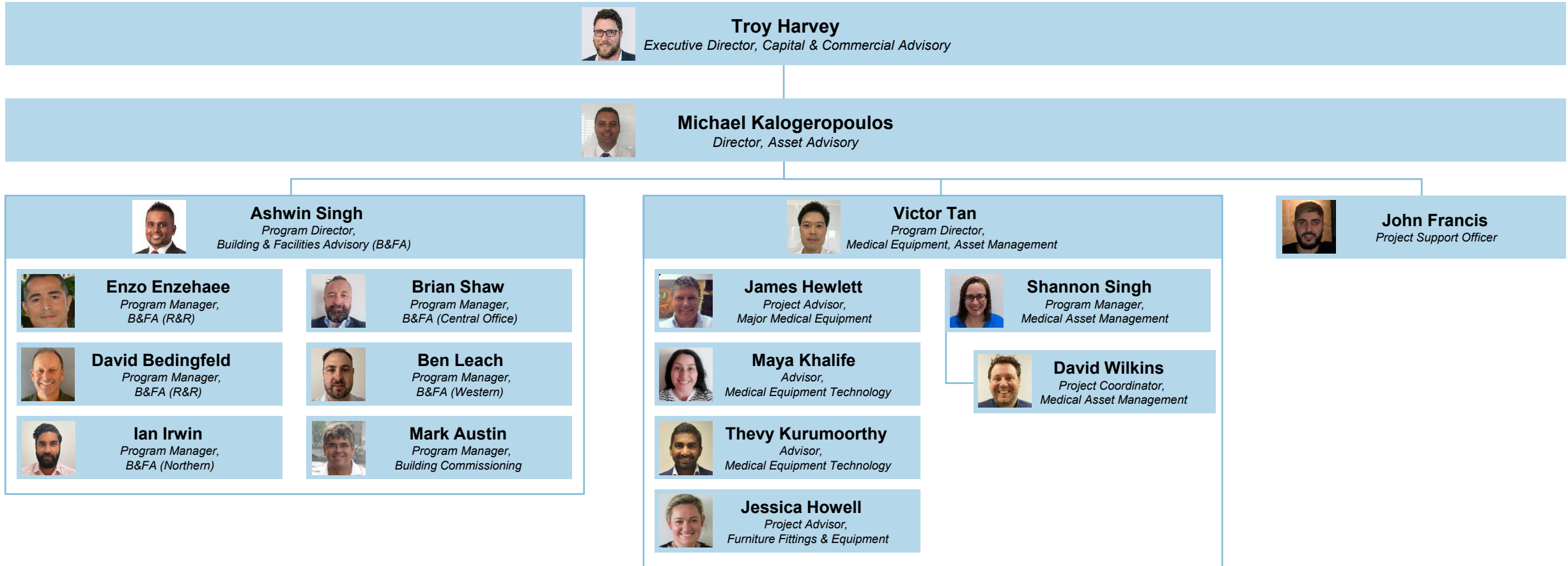
Capital & Commercial Advisory | Health Facility Advisory (1)



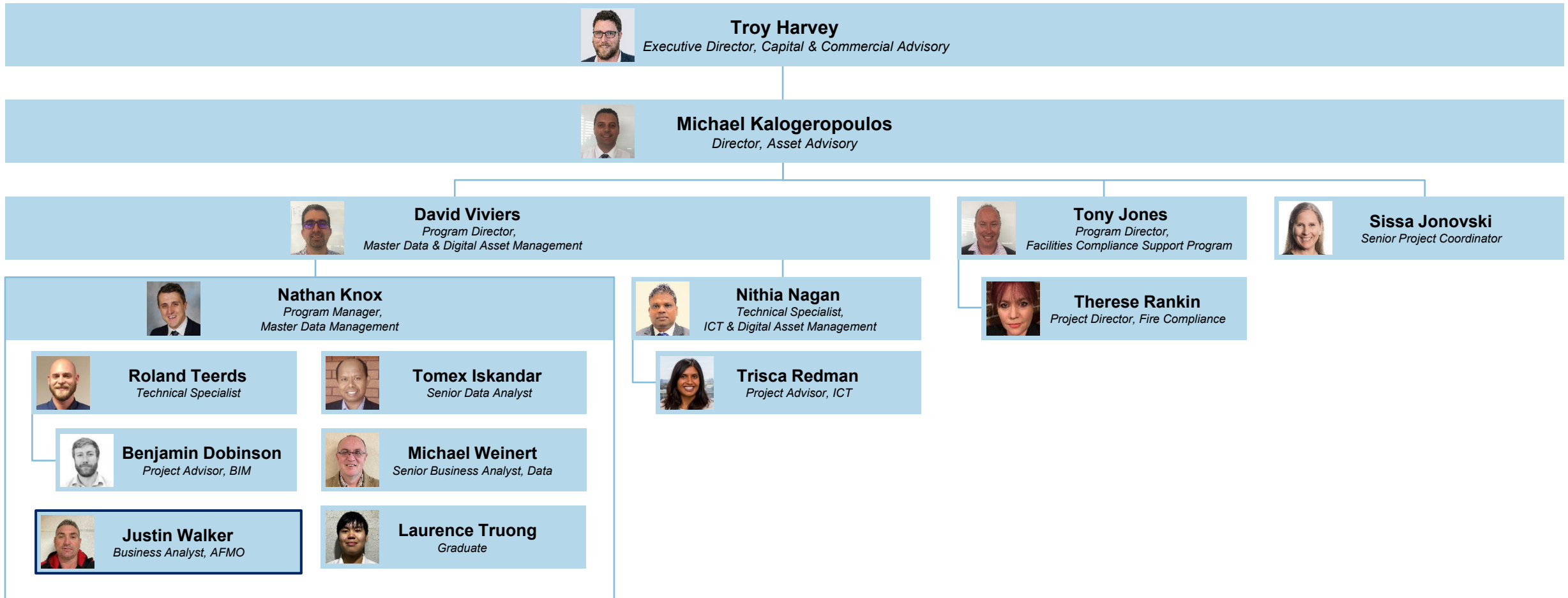
Capital & Commercial Advisory | Health Facility Advisory (2)



Capital & Commercial Advisory | Asset Advisory ⁽¹⁾




Capital & Commercial Advisory | Asset Advisory (2)



Main Manager Reporting Line (Shared Resource – See Western Region / Asset Programs Delivery)

Capital & Commercial Advisory | Asset Advisory ⁽³⁾

 **Troy Harvey**
Executive Director, Capital & Commercial Advisory

 **Michael Kalogeropoulos**
Director, Asset Advisory

 **Stephen Linnegar**
*Program Director,
Construction & Safety*

 **Boyd Harley**
Construction Manager

 **Greg Barnes**
Construction Manager

 **Hugh Urquhart**
Construction and Safety Manager

 **Peter Phillips**
Construction and Safety Manager

Regions – final structure

The proposed structure will be implemented progressively to ensure consultation is undertaken with teams and stakeholders and there will be a planned transition for each project.


Regional Executive Directors will work with teams to plan the transition to the final structure to occur over the next 8 weeks.

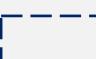
Regions

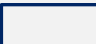
1. The following section reflects resource allocation information for current HI projects and is:

- Arranged by regions (**Western**, **Northern**, **Rural & Regional**).
- Further categorised by Projects (primarily under Local Health Districts and excluding the Asset Programs Delivery portfolio).

2. For project allocation, a distinct legend is defined at the bottom of pages to indicate single or multiple projects and line managers, as follows:

 Solid box indicates single project and main manager reporting line

 Dotted line indicates multiple projects, and reporting line information in bold / underlined denotes **main manager reporting line**.

 Solid line indicates shared resource between Regions and Functional Business Units

- Many people appear more than once across different projects.
- This results in multiple reporting lines according to the projects; however, each person will have the **one direct line manager**.

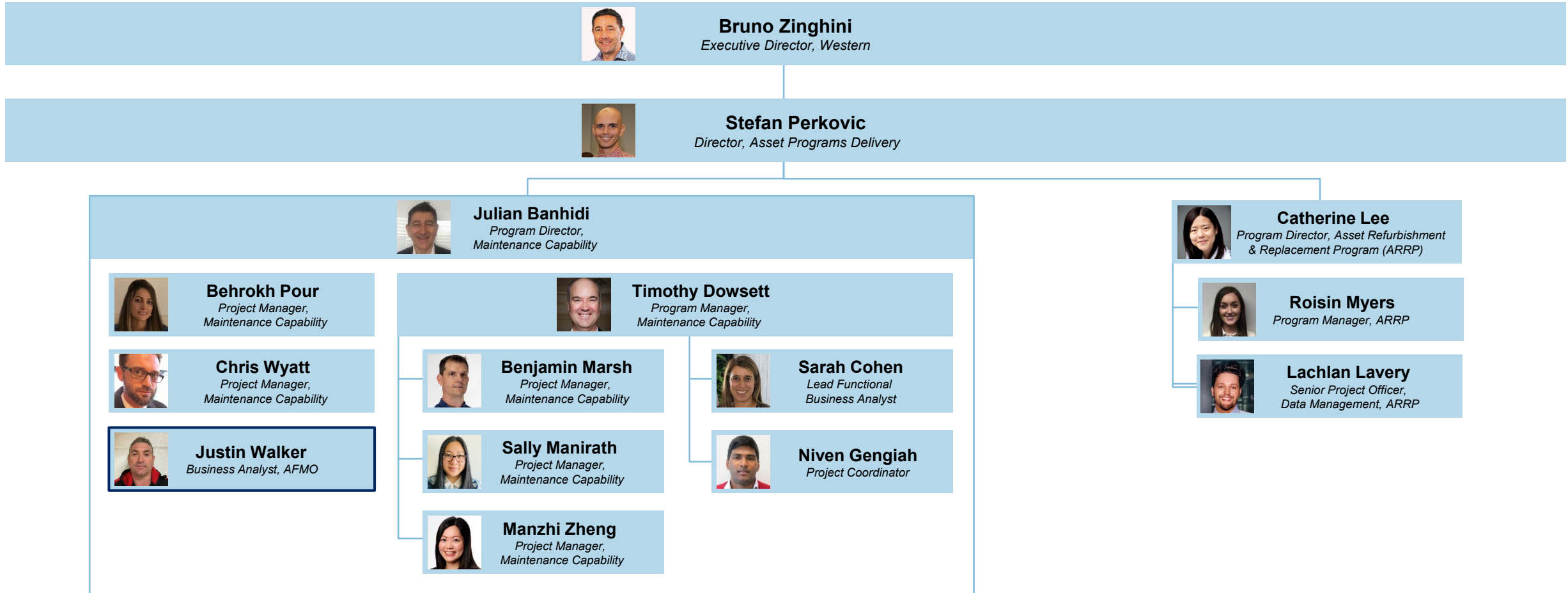
3. Abbreviations / Acronyms:

- APD – Assistant Project Director
- C&E – Communications & Engagement
- LHD – Local Health District
- MH – Mental Health
- PD – Project Director
- PM – Project Manager
- RAIR – Rural Ambulance Infrastructure Reconfiguration
- SAMIS – Sydney Ambulance Metropolitan Infrastructure Strategy
- SPD – Senior Project Director
- SWMHIP – Statewide Mental Health Infrastructure Program

Western Region

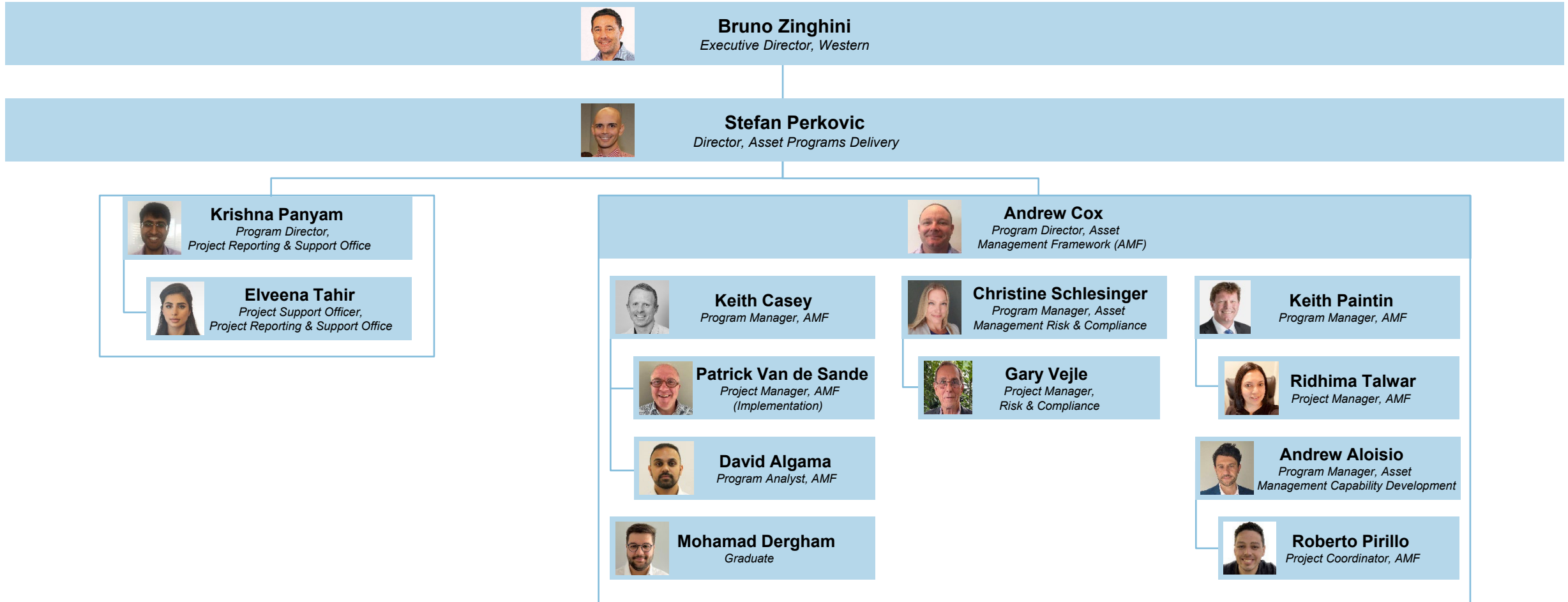


Western Region | Asset Programs Delivery ⁽¹⁾



Shared Resource (Main Manager Reporting Line in C&CA / Asset Advisory)

Western Region | Asset Programs Delivery ⁽²⁾



Western Region | Projects



Bruno Zinghini
Executive Director, Western

South Western Sydney LHD

Aerotropolis - Western Parkland City



Steve Hall
Senior Project Director
(Reports to Bruno Zinghini)




Lucy Fokkema
Project Director
(Reports to Steve Hall)



Jullie Jin
Assistant Project Officer
(Reports to Lucy Fokkema)

Bankstown Redevelopment



Marcus Moscos
Senior Project Director
(Reports to Bruno Zinghini)



Matthew Von Bertouch
Project Director
(Reports to Marcus Moscos)




Lilly Dolene
Manager, C&E
(Reports to Marcus Moscos)



Alanna Mills
Senior Coordinator
(Reports to Matthew Von Bertouch)

Bowral & District Hospital Stage 2



Marcus Moscos
Senior Project Director
(Reports to Bruno Zinghini)




Matthew Von Bertouch
Project Director
(Reports to Marcus Moscos)




Alex Frost
Project Coordinator
(Reports to Matthew Von Bertouch)

Campbelltown Hospital Stage 2



Patrick Collins
Project Director
(Reports to Marcus Moscos)

Fairfield




Andrew Paris
Senior Project Director
(Reports to Bruno Zinghini)



Joshua Scharfegger
Project Director
(Reports to Andrew Paris)



Lilly Dolene
Manager, C&E
(Reports Andrew Paris)



Michael Lieu
Graduate
(Reports to Andrew Paris)


Liverpool Health & Academic Precinct



Andrew Paris
Senior Project Director
(Reports to Bruno Zinghini)



Anthony Dimech
Senior Project Director
(Reports to Andrew Paris)



Simon Brender
Project Director
(Reports to Andrew Paris)



Michael Lieu
Graduate
(Reports to Andrew Paris)

 Multiple Projects

Western Region | Projects




Bruno Zinghini
Executive Director, Western

Illawarra Shoalhaven LHD


Milton Ulladulla Hospital Upgrades



Benjamin Ferry
Senior Project Director
(Reports to Bruno Zinghini)



Jenny Easton
Project Coordinator
(Reports to Benjamin Ferry)



Pallavi Singh
Graduate
(Reports to Benjamin Ferry)

Shellharbour Hospital Redevelopment



Marcus Moscos
Senior Project Director
(Reports to Bruno Zinghini)



Dominic Longo
Senior Project Director
(Reports to Marcus Moscos)



Patrick Collins
Project Director
(Reports to Dominic Longo)



Donson Phetrasy
Acting Project Lead, C&E
(Reports to Marcus Moscos)

Shoalhaven Hospital Redevelopment




Marcus Moscos
Senior Project Director
(Reports to Bruno Zinghini)



Jeremy Hart
Project Director
(Reports to Marcus Moscos)



Gerard Maestrelli
Assistant Project Director
(Reports to Jeremy Hart)




Penny Cox
Project Lead, C&E
(Reports to Marcus Moscos)


Wollongong Hospital Upgrades



Benjamin Ferry
Senior Project Director
(Reports to Bruno Zinghini)



Jenny Easton
Project Coordinator
(Reports to Benjamin Ferry)



Pallavi Singh
Graduate
(Reports to Benjamin Ferry)

 Multiple Projects

Western Region | Projects



Bruno Zinghini
Executive Director, Western

Nepean Blue Mountains LHD

Nepean Redevelopment Stages 1 & 2



Joe Romeo
Senior Project Director
(Reports to Bruno Zinghini)



Graeme Pearson
Project Coordinator
(Reports to John Kilzi)



John Kilzi
Project Director
(Reports to Joe Romeo)



Kalyani Kadam
Graduate
(Reports to Joe Romeo)



Nina Cleary
Project Director
(Reports to Joe Romeo)



Belinda Berryman
Manager, C&E
(Reports to Joe Romeo)



Rose Li
Assistant Project Director
(Reports to Joe Romeo)



Nicole Pierre
Senior Officer, C&E
(Reports to Belinda Berryman)



Steve Hall
Senior Project Director
(Reports to Bruno Zinghini)



Tim Shoolman
Senior Project Director
(Reports to Steve Hall)



Lucy Fokkema
Project Director
(Reports to Steve Hall)



Kalyani Kadam
Graduate
(Reports to Steve Hall)



Belinda Berryman
Manager, C&E
(Reports to Steve Hall)

Blue Mountains Hospital Redevelopment

Multiple Projects

Western Region | Projects

Bruno Zinghini
Executive Director, Western

World Class End of Life Palliative Care Program

<div style="border: 1px dashed #0070c0; padding: 5px; margin-bottom: 10px;"> <p>Chris Horton Senior Project Director <i>(Reports to Bruno Zinghini)</i></p> </div> <div style="border: 1px dashed #0070c0; padding: 5px; margin-bottom: 10px;"> <p>Nina Cleary Project Director <i>(Reports to Chris Horton)</i></p> <p style="text-align: center; margin-top: 5px;"><u>Westmead</u></p> </div> <div style="border: 1px dashed #0070c0; padding: 5px; margin-bottom: 10px;"> <p>Rabbie Morkos Project Director <i>(Reports to Chris Horton)</i></p> <p style="text-align: center; margin-top: 5px;"><u>Wyang</u></p> </div> <div style="border: 1px dashed #0070c0; padding: 5px;"> <p>Narelle Bromilow Project Director <i>(Reports to Chris Horton)</i></p> </div>	<div style="border: 1px dashed #0070c0; padding: 5px; margin-bottom: 10px;"> <p>Belinda Berryman Manager, C&E <i>(Reports to Chris Horton)</i></p> </div> <div style="border: 1px dashed #0070c0; padding: 5px; margin-bottom: 10px;"> <p>Nicole Pierre Senior Officer, C&E <i>(Reports to Belinda Berryman)</i></p> <p style="text-align: center; margin-top: 5px;"><u>Tamworth</u></p> </div> <div style="border: 1px dashed #0070c0; padding: 5px; margin-bottom: 10px;"> <p>Bronwyn Chalker Project Director <i>(Reports to Chris Horton)</i></p> <p style="text-align: center; margin-top: 5px;"><u>Nepean</u></p> </div> <div style="border: 1px dashed #0070c0; padding: 5px;"> <p>John Kilzi Project Director <i>(Reports to Chris Horton)</i></p> </div>
--	---

HealthShare

Parramatta Linen Service Relocation

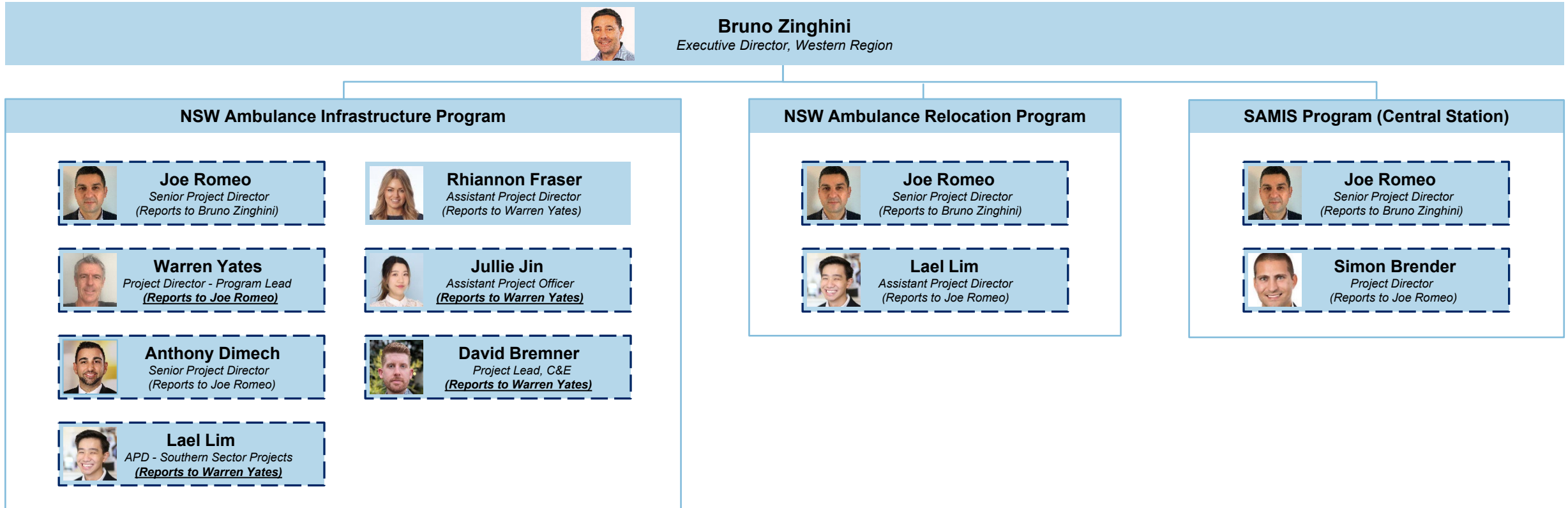
Julian Cook
Senior Project Director
(Reports to Bruno Zinghini)

Jeremy Hart
Project Director
(Reports to Julian Cook)

Multiple Projects

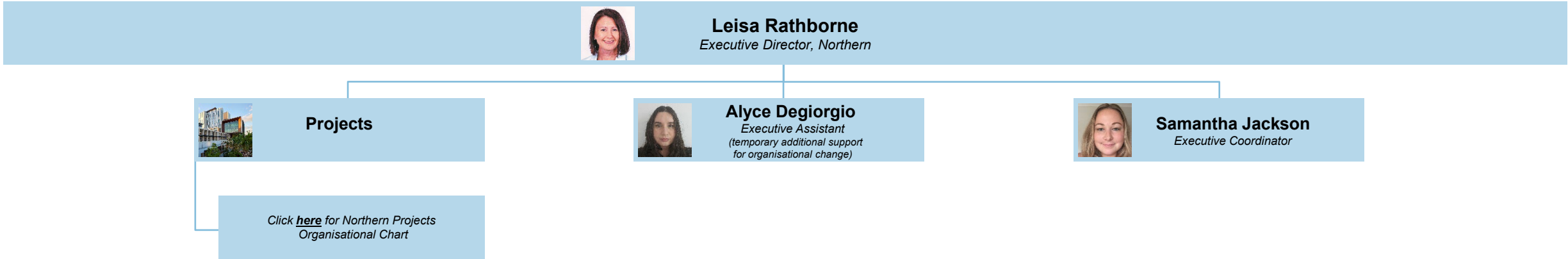
Shared Resource (Main Manager Reporting Line in C&CA / Property & Commercial)

Western Region | Projects

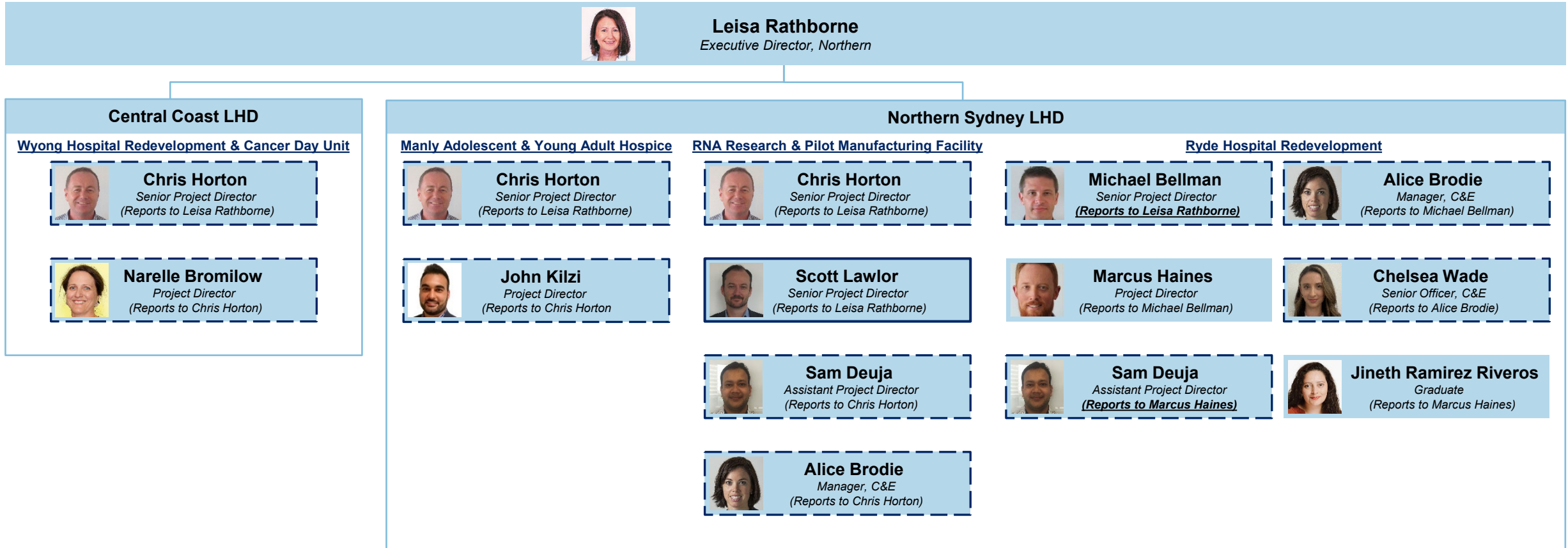


Multiple Projects

Northern Region



Northern Region | Projects



Multiple Projects

Shared Resource (Main Manager Reporting Line in C&CA / Property & Commercial)

Northern Region | Projects



Leisa Rathborne
Executive Director, Northern

Sydney LHD

Concord Car Park



Louise Irving
Assistant Project Director
(Reports to Nick Brooker)

Canterbury



Hayley Bell
Senior Project Director
(Reports to Leisa Rathborne)

Royal Prince Alfred Hospital Redevelopment



Adrian Timp
Senior Project Director
(Reports to Leisa Rathborne)



Prue Tarmizi
Manager, C&E
(Reports to Adrian Timp)

Concord Forensic Mental Health - SWIMHP



Nick Brooker
Senior Project Director
(Reports to Amanda Bock)



Tamsin Cash
Assistant Project Director
(Reports to Hayley Bell)



Michael Smytheman
Project Director
(Reports to Adrian Timp)



Morgan Tallack
Senior Officer, C&E
(Reports to Prue Tarmizi)



Louise Irving
Assistant Project Director
(Reports to Nick Brooker)



Alice Brodie
Manager, C&E
(Reports to Hayley Bell)



Megan Hart
Project Coordinator
(Reports to Michael Smytheman)



Morgan Tallack
Senior Officer, C&E
(Reports to Alice Brodie)

Multiple Projects

Northern Region | Projects



Leisa Rathborne
Executive Director, Northern

Western Sydney LHD

Blacktown



Chris Horton
Senior Project Director
(Reports to Leisa Rathborne)



Scott Mcknight
Project Director
(Reports to Chris Horton)

Bunya - SWMHIP




Elise Miller
Project Director
(Reports to Chris Horton)

Cumberland West MH Services Relocation



Chris Skeggs
Senior Project Director
(Reports to Leisa Rathborne)



Hossein Bidgoli
Project Director
(Reports to Chris Skeggs)



Sukhjeet Kaur
Assistant Project Director
(Reports to Hossein Bidgoli)

Rouse Hill



Matthew Malone
Senior Project Director
(Reports to Leisa Rathborne)



Katie Babula
Project Director
(Reports to Matthew Malone)



Natasia Seo
Assistant Project Director
(Reports to Katie Babula)



Belinda Berryman
Manager, C&E
(Reports to Matthew Malone)

Westmead Redevelopment



Elise Miller
Project Director
(Reports to Chris Skeggs)



Lisa Bannon
Assistant Project Director - PM Role
(Reports to Elise Miller)

Viral Vector



Chris Skeggs
Senior Project Director
(Reports to Leisa Rathborne)



Rabbie Morkos
Project Director - Kids
(Reports to Chris Skeggs)




Sherrie Rutherford
Project Director - PM Role
(Reports to Rabbie Morkos)



Donson Phetrasy
Project Lead, C&E
(Reports to Chris Skeggs)



Natalie Ong
Assistant Project Director
(Reports to Sherrie Rutherford)

 Multiple Projects

Northern Region | Projects



Leisa Rathborne
Executive Director, Northern

South Eastern Sydney LHD

Prince of Wales Redevelopment Randwick

Gavin Thompson
Senior Project Director
(Reports to Leisa Rathborne)

Scott Mcknight
Project Director
(Reports to Gavin Thompson)

Peta Gismondo
Manager, C&E
(Reports to Gavin Thompson)

Chelsea Wade
Senior Officer, C&E
(Reports to Peta Gismondo)

St George Stage 3

Gavin Thompson
Senior Project Director
(Reports to Leisa Rathborne)

Tim Shoolman
Senior Project Director
(Reports to Gavin Thompson)

Silvia Queiroz Campos
Project Coordinator
(Reports to Tim Shoolman)

Sydney Children's Hospital Network

Randwick

Gavin Thompson
Senior Project Director
(Reports to Leisa Rathborne)

Kevin Maclennan
Senior Project Director
(Reports to Gavin Thompson)

Peta Gismondo
Manager, C&E
(Reports to Gavin Thompson)

Chelsea Wade
Senior Officer, C&E
(Reports to Peta Gismondo)

Westmead

Chris Skeggs
Senior Project Director
(Reports to Leisa Rathborne)

Caleb Teh
Senior Project Director
(Reports to Chris Skeggs)

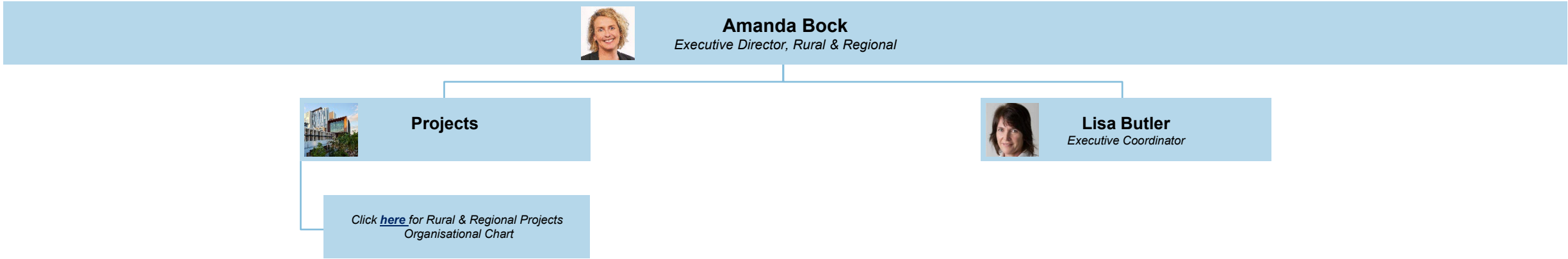
Anna Chernih
Project Director - PSB
(Reports to Caleb Teh)

Lisa Bannon
Assistant Project Director - MSCP
(Reports to Caleb Teh)

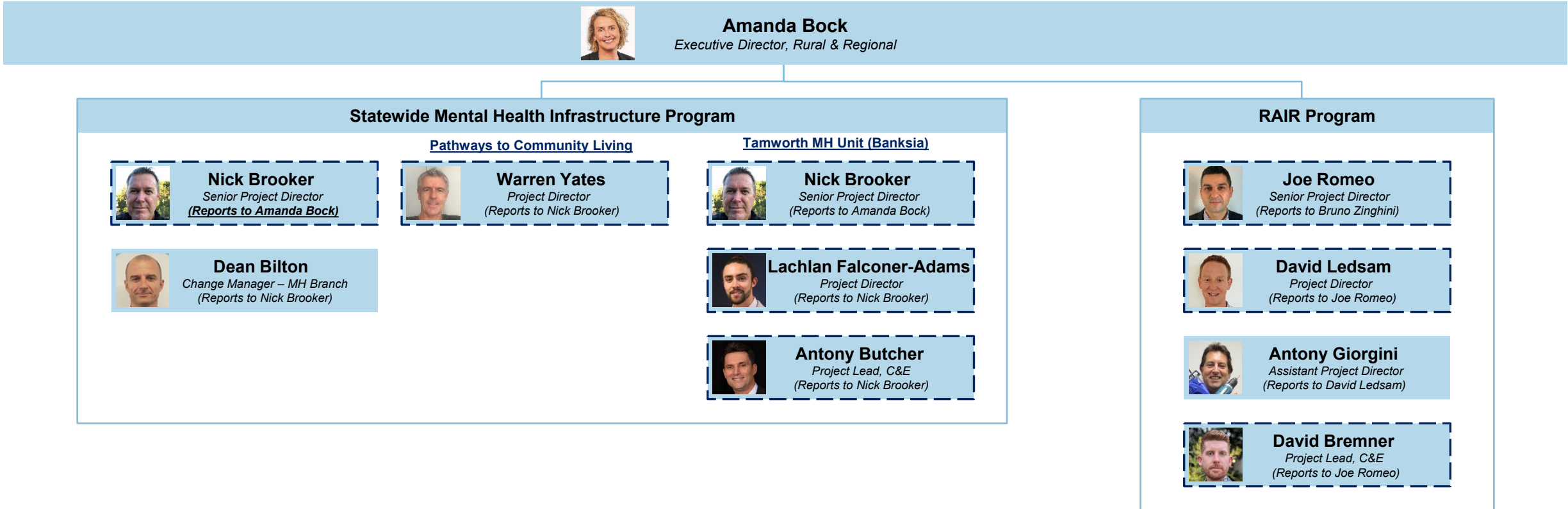
Donson Phetrasy
Project Lead, C&E
(Reports to Caleb Teh)

Multiple Projects

Rural & Regional Region



Rural & Regional Region | Projects



Multiple Projects

Rural & Regional Region | Projects



Amanda Bock
Executive Director, Rural & Regional

Albury Wodonga Health Service

Albury Campus Redevelopment



Hayley Bell
Senior Project Director
(Reports to Leisa Rathborne)



Nikki Glenane
Manager, C&E
(Reports to Hayley Bell)



Michael Bellman
Senior Project Director
(Reports to Leisa Rathborne)



Eliza Milenkovic
Senior Officer, C&E
(Reports to Nikki Glenane)



Ian Gibson
Project Director
(Reports to Hayley Bell)

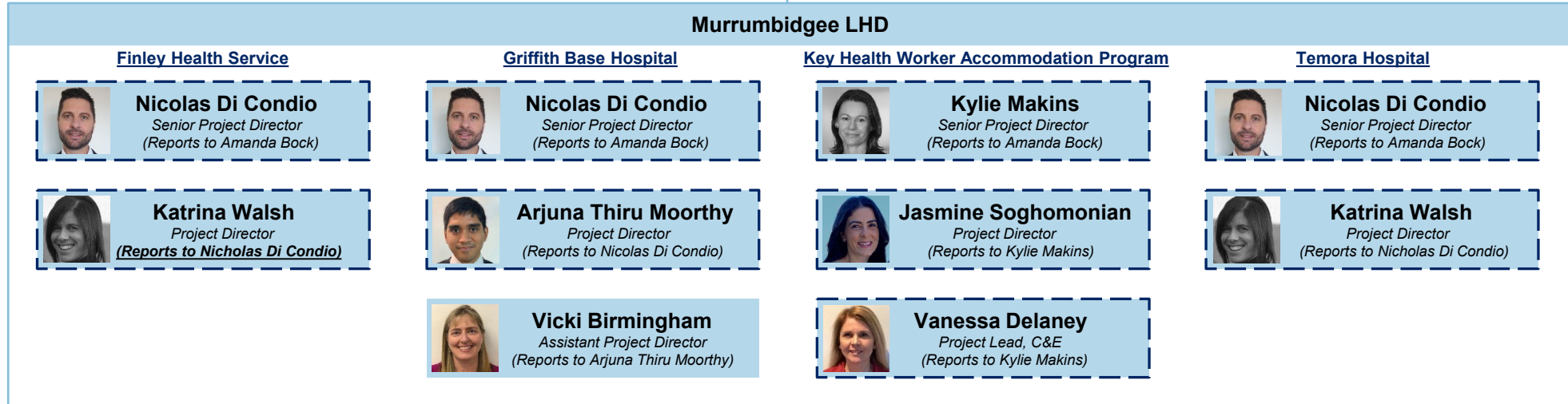


Clare Barraclough
Assistant Project Director
(Reports to Ian Gibson)

Rural & Regional Region | Projects



Amanda Bock
Executive Director, Rural & Regional



 Multiple Projects

Rural & Regional Region | Projects



Amanda Bock
Executive Director, Rural & Regional

Western NSW LHD

Bathurst Hospital



Kylie Makins
Senior Project Director
(Reports to Amanda Bock)



Marty Smith
Project Director
(Reports to Kylie Makins)



Annabel Dunlop
Project Lead, C&E
(Reports to Kylie Makins)



Eshan Wanigasingha
Graduate
(Reports to Marty Smith)

Blayney Multi Purpose Service



Kylie Makins
Senior Project Director
(Reports to Amanda Bock)



Arjuna Thiru Moorthy
Project Director
(Reports to Kylie Makins)



Vanessa Delaney
Project Lead, C&E
(Reports to Kylie Makins)

Cowra Hospital



Kylie Makins
Senior Project Director
(Reports to Amanda Bock)



Marty Smith
Project Director
(Reports to Kylie Makins)



Annabel Dunlop
Project Lead, C&E
(Reports to Kylie Makins)

Dubbo Drug & Alcohol Rehabilitation Facility



Kylie Makins
Senior Project Director
(Reports to Amanda Bock)



Melissa Foong
Project Director
(Reports to Kylie Makins)

Multiple Projects

Rural & Regional Region | Projects



Amanda Bock
Executive Director, Rural & Regional

Southern NSW LHD


Batemans Bay Health One



Matthew Malone
Senior Project Director
(Reports to Amanda Bock)



Orestes Lomis
Project Director
(Reports to Matthew Malone)



Penny Cox
Project Lead, C&E
(Reports to Mathew Malone)



Eliza Milenkovic
Senior Officer, C&E
(Reports to Penny Cox)

Bombala MPS



Matthew Malone
Senior Project Director
(Reports to Amanda Bock)



Anthony Dimech
Senior Project Director
(Reports to Matthew Malone)



Rita Corbett
Project Director
(Reports to Anthony Dimech)


Eurobodalla Regional Hospital



Matthew Malone
Senior Project Director
(Reports to Amanda Bock)



Orestes Lomis
Project Director
(Reports to Matthew Malone)



Penny Cox
Project Lead, C&E
(Reports to Matthew Malone)



Eliza Milenkovic
Senior Officer, C&E
(Reports to Penny Cox)


Goulburn Hospital



Matthew Malone
Senior Project Director
(Reports to Amanda Bock)



David Ledsam
Project Director
(Reports to Matthew Malone)



Penny Cox
Project Lead, C&E
(Reports to Mathew Malone)

Key Health Worker Accommodation Program




Kylie Makins
Senior Project Director
(Reports to Amanda Bock)



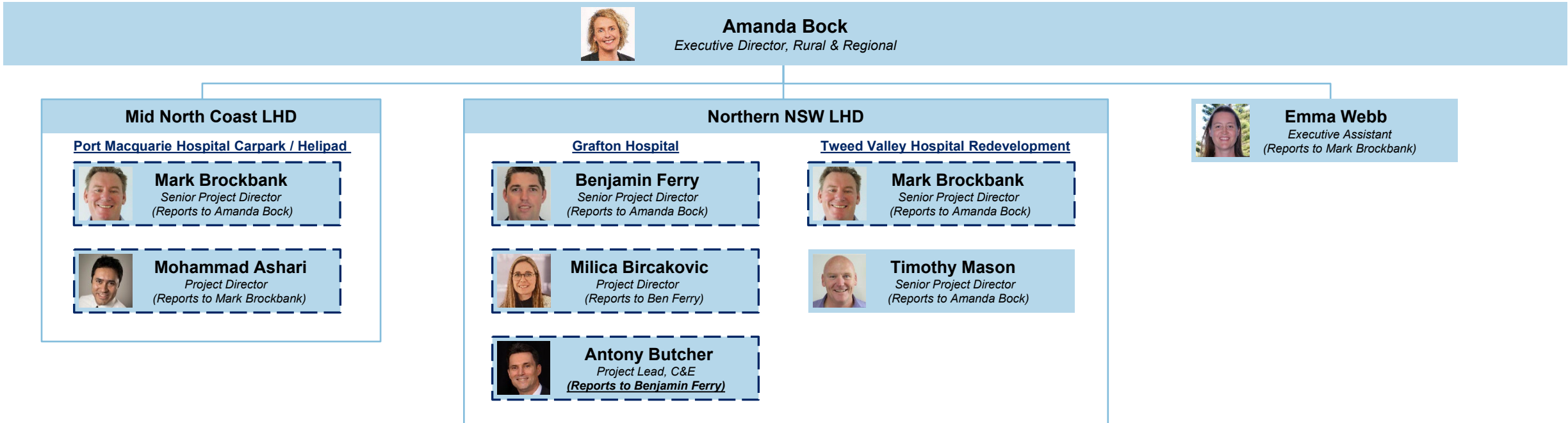
Jasmine Soghomonian
Project Director
(Reports to Kylie Makins)



Vanessa Delaney
Project Lead, C&E
(Reports to Kylie Makins)

 Multiple Projects

Rural & Regional Region | Projects



Multiple Projects

Rural & Regional Region | Projects



Amanda Bock
Executive Director, Rural & Regional

Hunter New England (New England) LHD

Glen Innes Hospital



Nicholas Rayner
Senior Project Director
(Reports to Amanda Bock)



Milica Bircakovic
Project Director
(Reports to Nicholas Rayner)



Kylie Neville
Project Lead, C&E
(Reports to Nicholas Rayner)

Gunnedah Hospital



Nick Brooker
Senior Project Director
(Reports to Amanda Bock)



Lachlan Falconer-Adams
Project Director
(Reports to Nick Brooker)



Kylie Neville
Project Lead, C&E
(Reports to Nick Brooker)

Forster / Tuncurry



Mark Brockbank
Senior Project Director
(Reports to Amanda Bock)



Antony Butcher
Project Lead, C&E
(Reports to Mark Brockbank)

Manning Base Hospital



Mark Brockbank
Senior Project Director
(Reports to Amanda Bock)



Milica Bircakovic
Project Director
(Reports to Mark Brockbank)




Antony Butcher
Project Lead, C&E
(Reports to Mark Brockbank)

Moree Hospital




Nicholas Rayner
Senior Project Director
(Reports to Amanda Bock)



Mohammad Ashari
Project Director
(Reports to Nicholas Rayner)



Kylie Neville
Project Lead, C&E
(Reports to Nicholas Rayner)

 Multiple Projects

Rural & Regional Region | Projects



Amanda Bock
Executive Director, Rural & Regional

Hunter New England (Newcastle & Hunter) LHD

Cessnock Hospital



Nicholas Rayner
Senior Project Director
(Reports to Amanda Bock)



Bronwyn Chalker
Project Director
(Reports to Nicholas Rayner)



Linda Brandon
Manager, Project C&E
(Reports to Nicholas Rayner)



Alana Nixon
C&E Officer
(Reports to Linda Brandon)

John Hunter Health & Innovation Precinct



Mark Brockbank
Senior Project Director
(Reports to Amanda Bock)



Scott Liddell
Project Director
(Reports to Mark Brockbank)



Peta Cooper
Manager, C&E
(Reports to Mark Brockbank)



Alana Nixon
C&E Officer
(Reports to Peta Cooper)



Nicholas Rayner
Senior Project Director
(Reports to Mark Brockbank)



Lauren Stocks
Project Director
(Reports to Nicholas Rayner)



Narelle Bromilow
Project Director
(Reports to Mark Brockbank)

Maitland Mental Health Expansion



Nicolas Di Condio
Senior Project Director
(Reports to Amanda Bock)



Melissa Foong
Project Director
(Reports to Nicolas Di Condio)



Linda Brandon
Manager, Project C&E
(Reports to Nicolas Di Condio)



Melissa Foong
Project Director
(Reports to Nicolas Di Condio)



Linda Brandon
Manager, Project C&E
(Reports to Nicolas Di Condio)

Muswellbrook Hospital



Nicolas Di Condio
Senior Project Director
(Reports to Amanda Bock)



Melissa Foong
Project Director
(Reports to Nicolas Di Condio)



Peta Cooper
Manager, C&E
(Reports to Nicolas Di Condio)



Alana Nixon
C&E Officer
(Reports to Peta Cooper)

Maitland Community Health


Multiple Projects

Rural & Regional Region | Projects

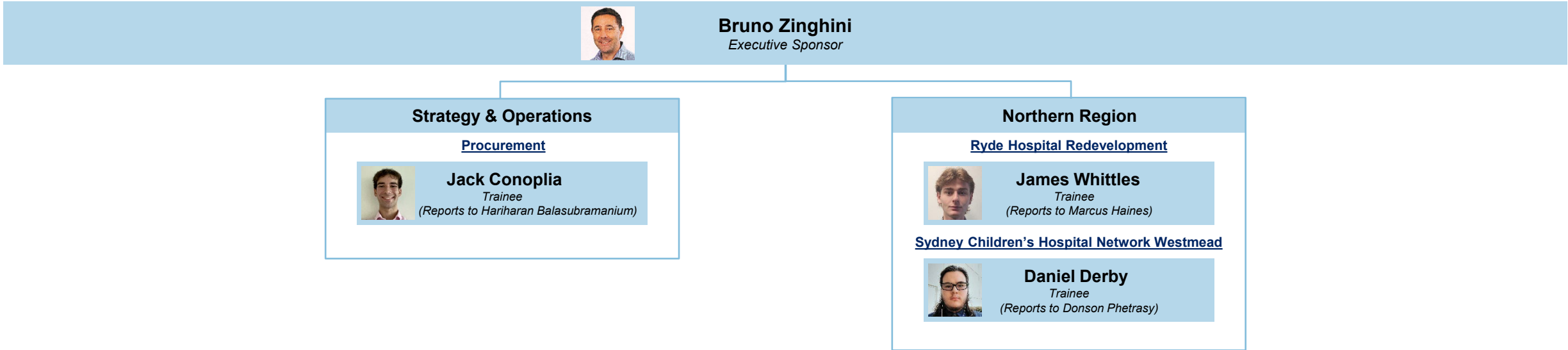


Amanda Bock
Executive Director, Rural & Regional



 Multiple Projects

NSW Government Infrastructure Trainee Program



Staff Currently Unavailable at HI

The below references staff currently unavailable at HI. If you require any further information, please contact either People & Culture or the relevant Executive Director.



Andrew Gill
Principal Analyst, Economic Advisory

D&C / Asset Lifecycle & Economic Advisory
External secondment until January 2025



Adrien Wu
Project Director

Northern Region
On leave until July 2024



Annabelle Matthews
Project Coordinator

Western Region / Asset Programs Delivery
External secondment until June 2024



Nana Wickramatilake
Senior Legal Officer

S&O / Legal
On leave until June 2024



Keisha Gu
*Lead Analyst, Asset Management
Business Analysis*

D&C / Asset Lifecycle & Economic Advisory
On leave until August 2024



Lizzie Hunter
Communications Officer

S&O / Communications & Engagement
On leave until July 2024



Natalie Evans
Executive Coordinator

Strategy & Operations
On leave until February 2025



Sarah McEwan
Project Lead, C&E

R&R Region
Supporting Northern NSW LHD until June 2024

