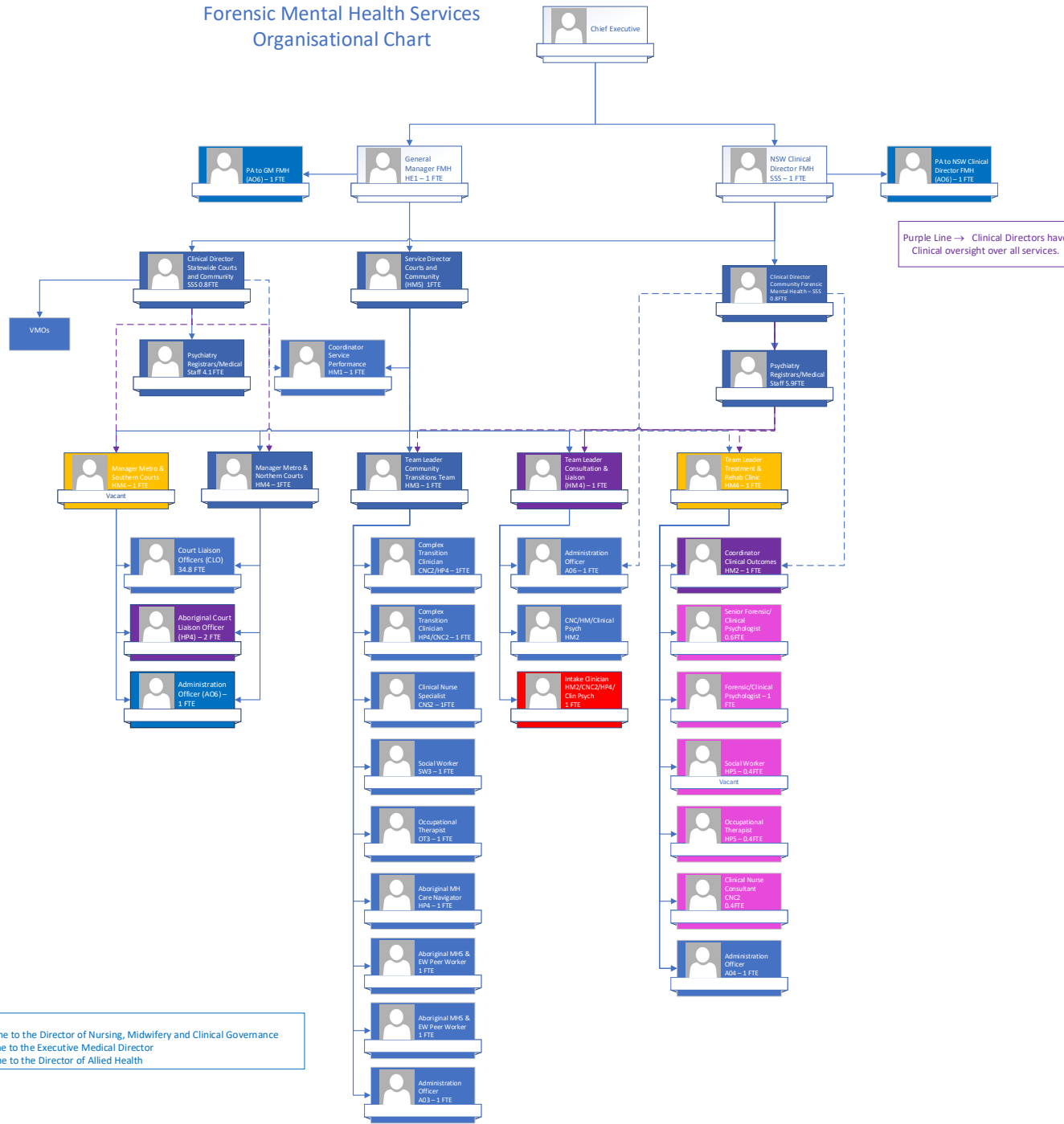


Please note:

- All Registered Nurses have a professional reporting line to the Director of Nursing, Midwifery and Clinical Governance
- All Medical clinicians have a professional reporting line to the Executive Medical Director
- All Allied Health staff have a professional reporting line to the Director of Allied Health

Proposed Court & Community Forensic Mental Health Services Organisational Chart



Purple Line → Clinical Directors have Clinical oversight over all services.

Please note:
 - All Registered Nurses have a professional reporting line to the Director of Nursing, Midwifery and Clinical Governance
 - All Medical clinicians have a professional reporting line to the Executive Medical Director
 - All Allied Health staff have a professional reporting line to the Director of Allied Health

Forensic Hospital Organisational Chart

