

Patient Safety Team

Current and Proposed structure

June 2023

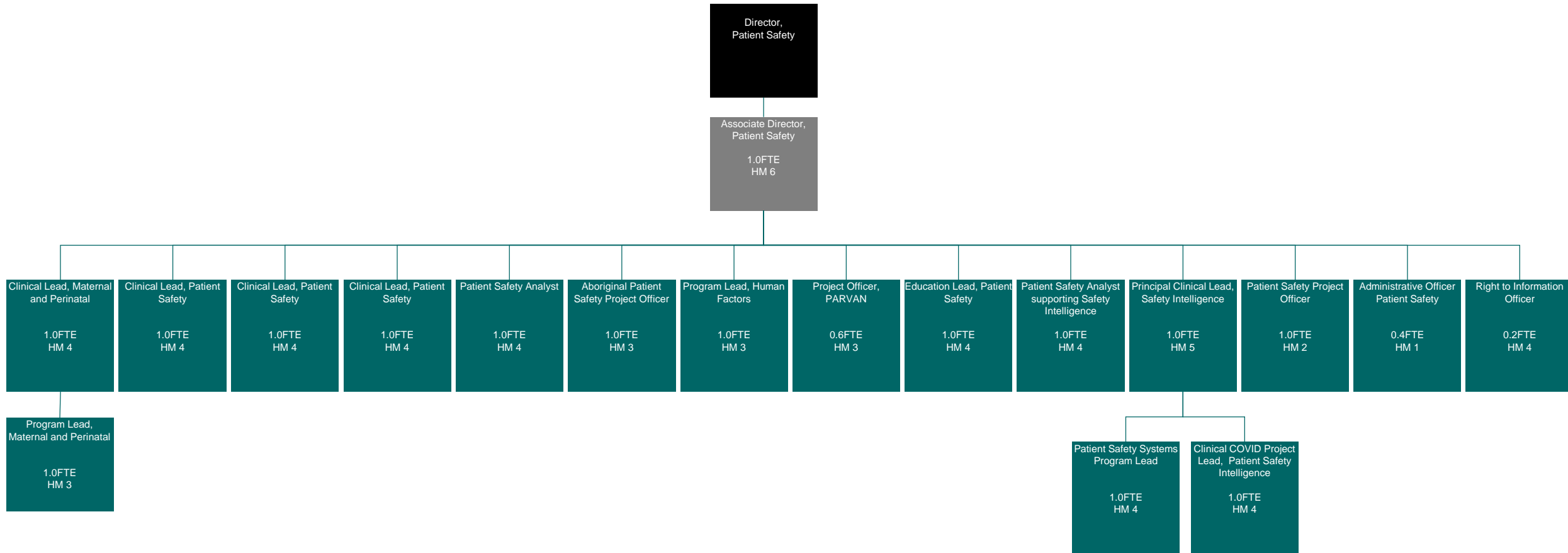
CONFIDENTIAL



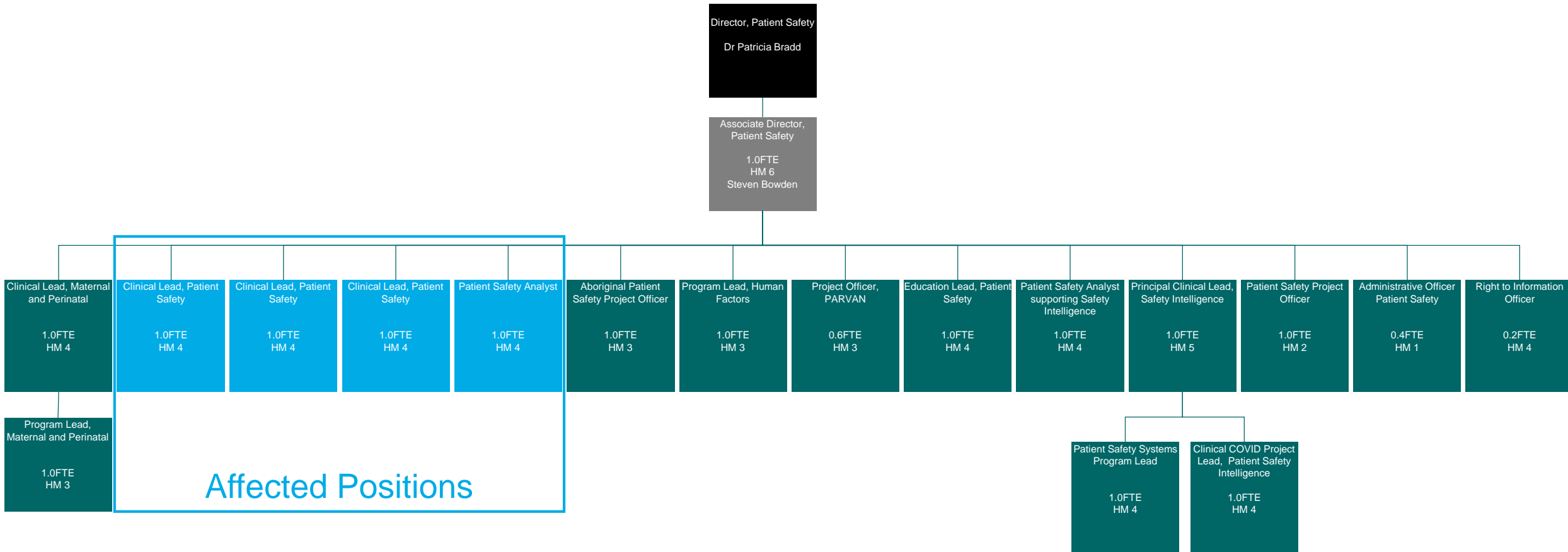
CLINICAL
EXCELLENCE
COMMISSION



Current Structure



Proposed Affected Positions



- **3 FTE Clinical Lead, Patient Safety Positions will be reduced to 2 FTE**
- **1 FTE Patient Safety Analyst Position affected**

Proposed 3 Functional workgroups

Clinical Lead Team

- Coordinate and manage SIR subcommittees and associated processes
- Monitor and respond to patient safety issues
- Policy creation, review and supporting materials

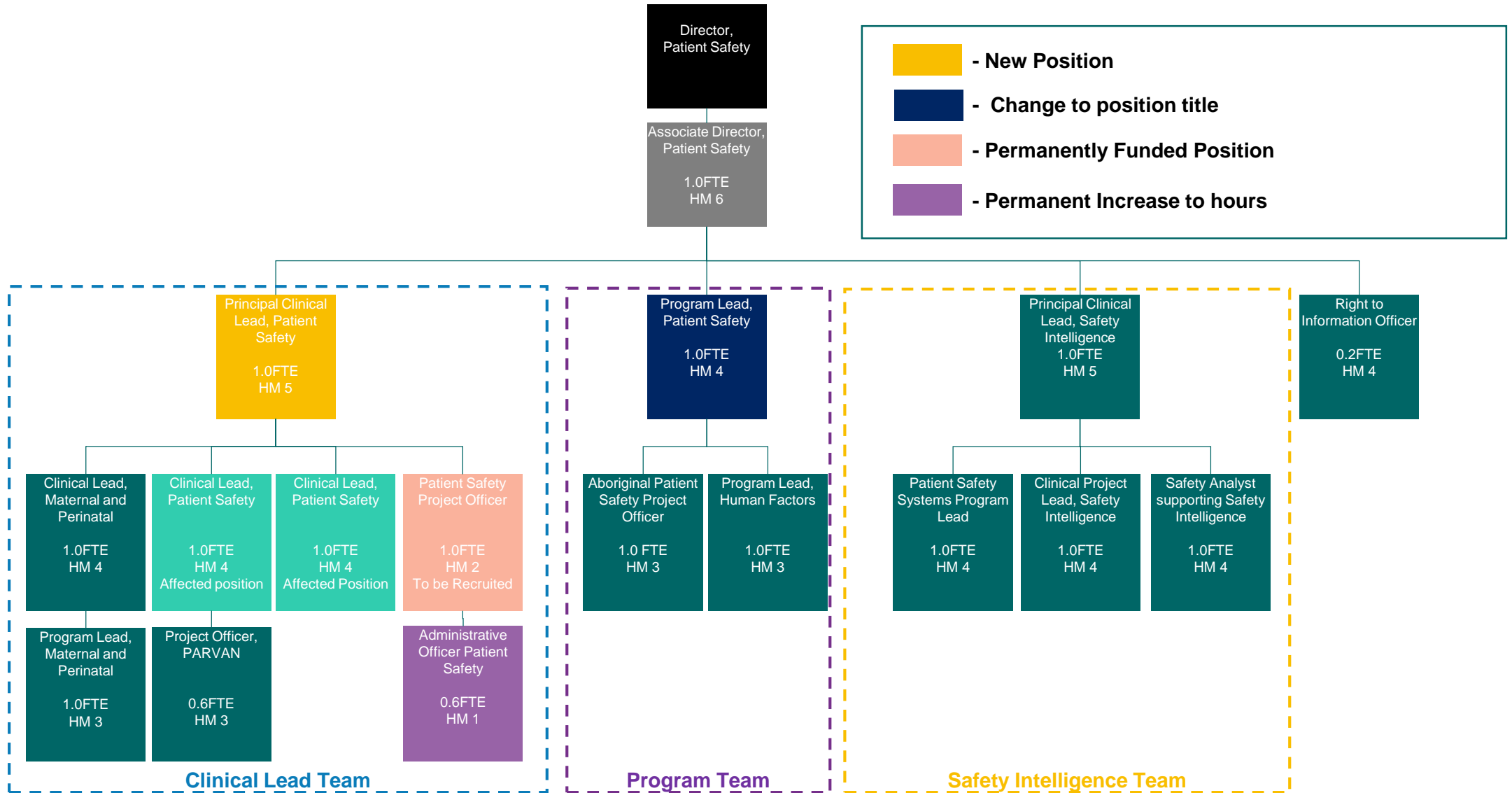
Program Team

- Create and deliver patient safety education programs
- Develop, implement and maintain human factors program
- Consult and provide expertise on relevant policies and support materials
- Provide culturally appropriate expertise for patient safety programs

Safety Intelligence

- Governance and useability of safety intelligence data systems, including PSD & ims+
- Respond to system data and analysis requests
- Regular reporting and data extracts
- Maintain data integrity in CEC safety systems

Proposed Structure



Proposed Structure – Reporting Line Changes

