



Consultation Paper

Completion of tunnel link and Refurbishment of Food Services Staff Facilities

Food Services, Business Operations
Infrastructure and Health Support Services

Work Area	Author(s)	Contact Details
Business Operation	Ken Barnett	Ken.Barnett@act.gov.au



Contents

1. Introduction	3
2. Purpose	3
3. Impacted Areas	4
4. Rationale for changes.....	4
5. Works Schedule.....	5
6. Consultation methodology.....	6
7. References	6

ATTACHMENT A Proposed layout of the impacted areas/scope of works

ATTACHMENT B: Proposed layout of permanent Kitchen Store and temporary Food Services Staff Room and Lockers

1. Introduction

The Canberra Hospital Expansion Critical Services Building (CSB) is the largest healthcare infrastructure project undertaken in the Territory's history and it represents the largest clinical and operational change program to ever be implemented by CHS.

Building 5 is a 44,000sqm nine story building specifically designed to deliver state-of-the-art acute clinical services at the Canberra Hospital.

Building 5 will integrate with a number of existing buildings at the Campus including Building 1 and Building 2, to facilitate a seamless public throughfare, patient transportation and back-of-house logistics distribution.

The service profile of Building 5 includes:

- new reception and retail outlets,
- new emergency department with 127 treatment spaces,
- medical imaging department dedicated to emergency and inpatients,
- operating theatre complex with 22 theatres, including hybrid theatres and interventional radiology suites,
- acute coronary care unit with interventional cardiac laboratories,
- 60 bed Intensive Care Unit with four dedicated paediatric beds (double the current capacity),
- four inpatient units with 128 beds,
- new sterilising services department that will replace the existing service at Mitchell ACT,
- helipad with future provisioning for a second landing site,
- ambulance bays,
- logistics port with an underground tunnel connection to the main campus loading dock; and
- significant landscape works to create a new north and south pedestrian link to the new reception and internal upgrades to ground floor of Building 2.

Building 5 is designed to provide state-of-the-art facilities for medical practice and will incorporate the latest advances in technology and contemporary hospital design – enabling a patient-centred model of care that will maximise safety, health outcomes, operational efficiency, engineering services.

2. Purpose

The purpose of this paper is to describe the upcoming planned infrastructure works to allow the completion of the link tunnel between Buildings 1 and 5.

The planned works are detailed below and are being provided to undertake consultation with the impacted staff and the relevant Unions.

Noting that this paper is referring to Stages 2- 6 of the planned works, the consultation and subsequent works undertaken recently with the temporary relocation of 25 lockers from the male change rooms is referred to as Stage 1.

Once all stages of this package of work are complete, in addition to the completion of the link tunnel between the two buildings, Food Services staff will have significantly improved facilities at their disposal which will include an upgraded staff room and amenities.

3. Impacted Areas

The areas that will be impacted by the planned works in Stages 2 - 6 are the:

- Food Services:
 - male lockers
 - female lockers
 - toilets/amenities
 - staff room
- Kitchen dry food store
- Menu monitors room
- CHS nutrition thickened fluid store
- CHS parenteral nutrition store.
- Facilities Management administration area.

Attachment A shows the location of the new tunnel and the impacted areas according to the current floor plan.

The lockers, staff room and amenities are frequently utilised by the Food Services staff. The Menu monitors room and as well as the storerooms are regularly used by CHS staff.

In late 2022, formal consultation was completed with the Facilities Management (FM) staff that will be impacted by these changes. The relevant Unions were included in this consultation process. Therefore, these staff are not included as part of this current consultation.

Attachment B shows the floor plan of the area impacted relating to the FM staff.

The public do not have access nor utilise the impacted areas noted.

4. Rationale for changes

The completion of the link tunnel between Buildings 1 and 5 is required to ensure there is a suitable travel route to support the provision of 'back of house' services - including food deliveries and collection for patients.

With the new Building 5 to become operational in the second half of 2024, the completion of the link tunnel by the end of 2023 is essential to support the commencement of operational commissioning in the new year (2024).

To support the completion of the tunnel within the required timeframe, the relocation of the impacted areas mentioned above are required to allow the infrastructure work on the tunnel to continue from the Stage 1 works.

5. Works Schedule

With the completion of the works schedule (Table 1) noted below:

- there will be an appropriate link tunnel to support the new Building 5.
- there will be a significant upgrade to the Food Services staff room, change rooms and lockers.

Table 1: Schedule of Works

Description	Details	Timing
Stage 1		
New tunnel breakthrough for Building 5 connection to Building 1,	Relocation of male lockers to facilitate early entry breakthrough works by Builder (Multiplex)	Consultation completed 17 March 2023 to facilitate relocation of male lockers (25) as part of early works. Relocation completed 30 March 2023.
Tunnel works contractor appointment.	Engagement of head contractor, Projex, by Major Projects Canberra as part of Canberra Hospital Expansion enabling works.	Completed.
Stage 2		
Tunnel decanting processes – refer Attachment B	Facilities Management (FM) administration office is decanted. FM office team move relocation process agreed as part of consultation process completed in late 2022.	Timetable for works to be completed is expected to be 2 months,
	Auxiliary Library space is decanted – currently vacant.	
Creation of permanent accommodation - refer Attachment B.	Creation of new permanent location for relocation of Kitchen Dry Food Store to the FM administration office.	
Creation of temporary accommodation - refer Attachment B.	Utilisation of vacant Auxiliary Library space and remaining part of vacated FM office - Creation of temporary Food Services Team staff areas, and separate male and female locker rooms.	
Stage 3		
Relocation of staff from Stage 2 works,	Food Services Team members relocated to permanent and temporary spaces created as part of Stage 2.	Following completion of works.
Stage 4		
Design User Groups convene.	Design User Groups convened to support development of design works for the new facilities and staff amenities	Commencing May 2023

Description	Details	Timing
Stage 5		
Demolition	Demolish old Food Services Team staff room and amenity areas -refer Attachment A.	Following relocation of staff. Team members to utilise toilet amenities in Building 3, Level 1 for duration of Stages 4 & 5 works (as required).
New works.	Building of new facilities and amenities adjoining the new tunnel.	5 months (following Stage 2) - subject to building latent conditions and operational constraints.
Stage 6		
Staff relocate - Building 1 and Building 5 Tunnel construction complete	Food Services Team members relocate to new amenities/spaces adjoining new tunnel connecting B1 to B5.	Expected timeframe to complete all works is 7 months subject to building latent conditions and operational constraints.

6. Consultation methodology

This consultation paper is to seek feedback on Stages 2 - 6 as outlined in the above schedule.

The consultation period will be launched via a team meeting with Food Services staff on 10 May 2023. The consultation paper will then be:

- issued by email to Food Services staff
- available in hard copy in the Food Services staff room
- issued to the relevant Unions.

Regular fortnightly updates on the progress of the works will be provided to Food Services staff at all team meetings.

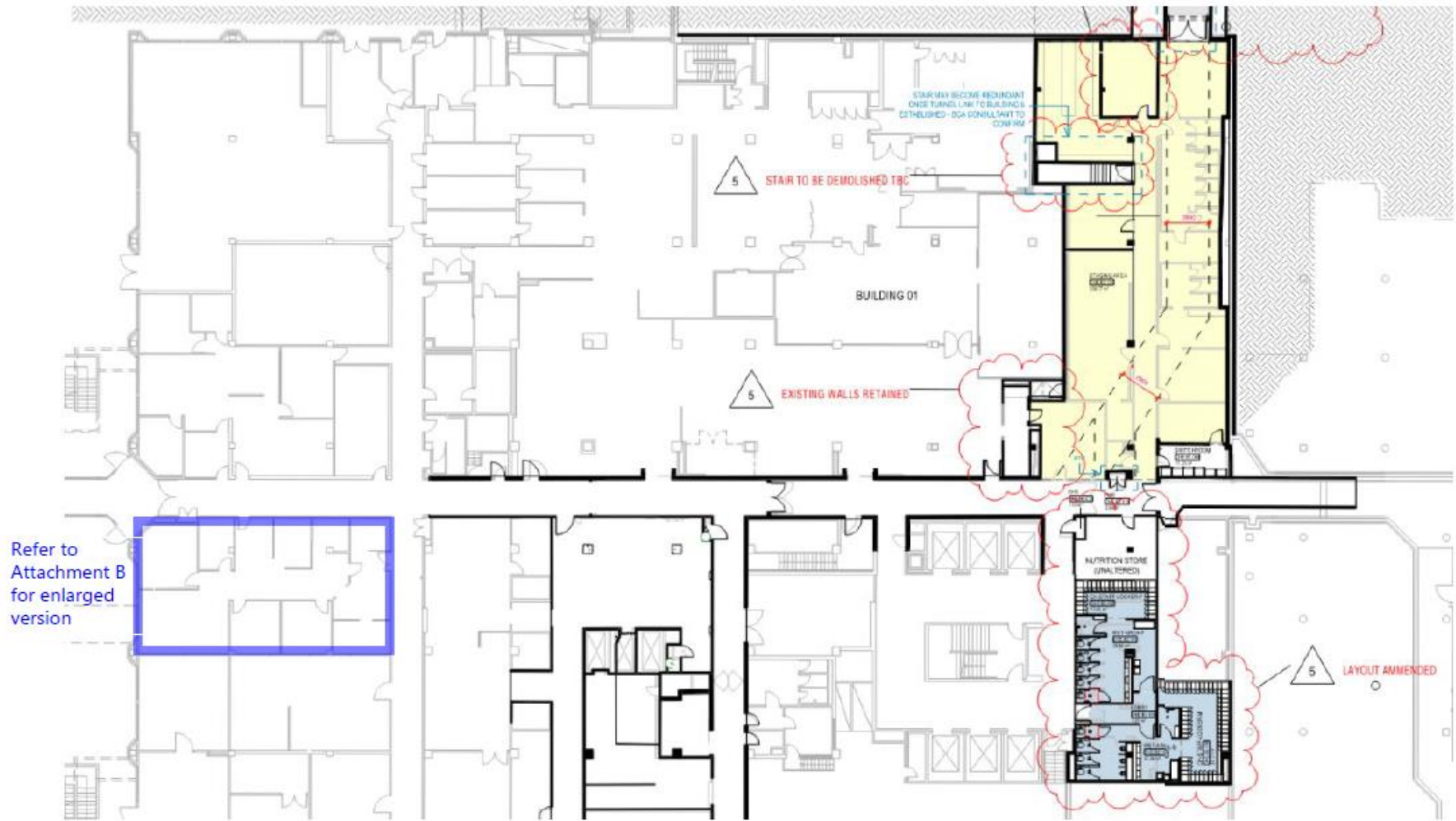
We are seeking responses on this proposal as to any concerns you may have and any feedback you would like considered.

Feedback can be provided to CHS.CHEunionforums@act.gov.au or via the feedback box located in the Food Services staff room. Closing date for feedback will be **5.00pm 24 May 2023** at which time the consultation period will have been completed.

7. References

Document
Attachment A – Proposed layout of the impacted areas/scope of works.
Attachment B – Proposed layout of permanent Kitchen Store and temporary Food Services Staff Room and Lockers.

ATTACHMENT A Proposed layout of the impacted areas/scope of works



ATTACHMENT B: Proposed layout of permanent Kitchen Store and temporary Food Services Staff Room and Lockers

