

Infrastructure and Asset Management Division within the Ministry of Health

Staff Consultation
28 October 2024



Health

Acknowledgment of Country

We acknowledge the traditional custodians of the land on which 1 Reserve Road is situated: the Cammeraygal (Gammaraygal) people.

We honour the ancestors of yesterday, the custodians of today and those of tomorrow.

We recognise the continuing connection to land and waters, and how culture is held, nurtured and shared.

We pay our respects.



Background

Why is this change happening?

A new Division, titled Infrastructure and Asset Management is being created within the Ministry.

This new division will bring together functions currently managed within the Ministry and Health Infrastructure (HI) to create a streamlined approach to capital planning, infrastructure delivery, and strategic asset management across NSW.

This change will see the creation of a new dual Deputy Secretary/Chief Executive role to lead the new division

HI will remain a Health Administration Corporation (HAC) entity but will transition from being Board-governed to Chief Executive-governed.

There will be two Phases of this change, with Phase 1 proposed to be implemented in mid-December. Phase 2 will commence next year and does not form part of this consultation.

This change also forms part of the broader ongoing review to consolidate corporate and business services and shared services across the Pillars, Shared Services and MOH.

Impacted Branches- Phase 1



This means that several Ministry branches and teams, will be impacted as part of the Phase 1 including:

- Strategic Reform and Planning Branch
- Strategic Asset Management Branch
- Corporate Services and Business Improvement Branch

Additionally, a number of teams within Health Infrastructure will undergo structural adjustments. The aim, again, is to align capital planning, infrastructure delivery and strategic asset management functions for improved collaboration and outcomes.

Summary of proposed changes

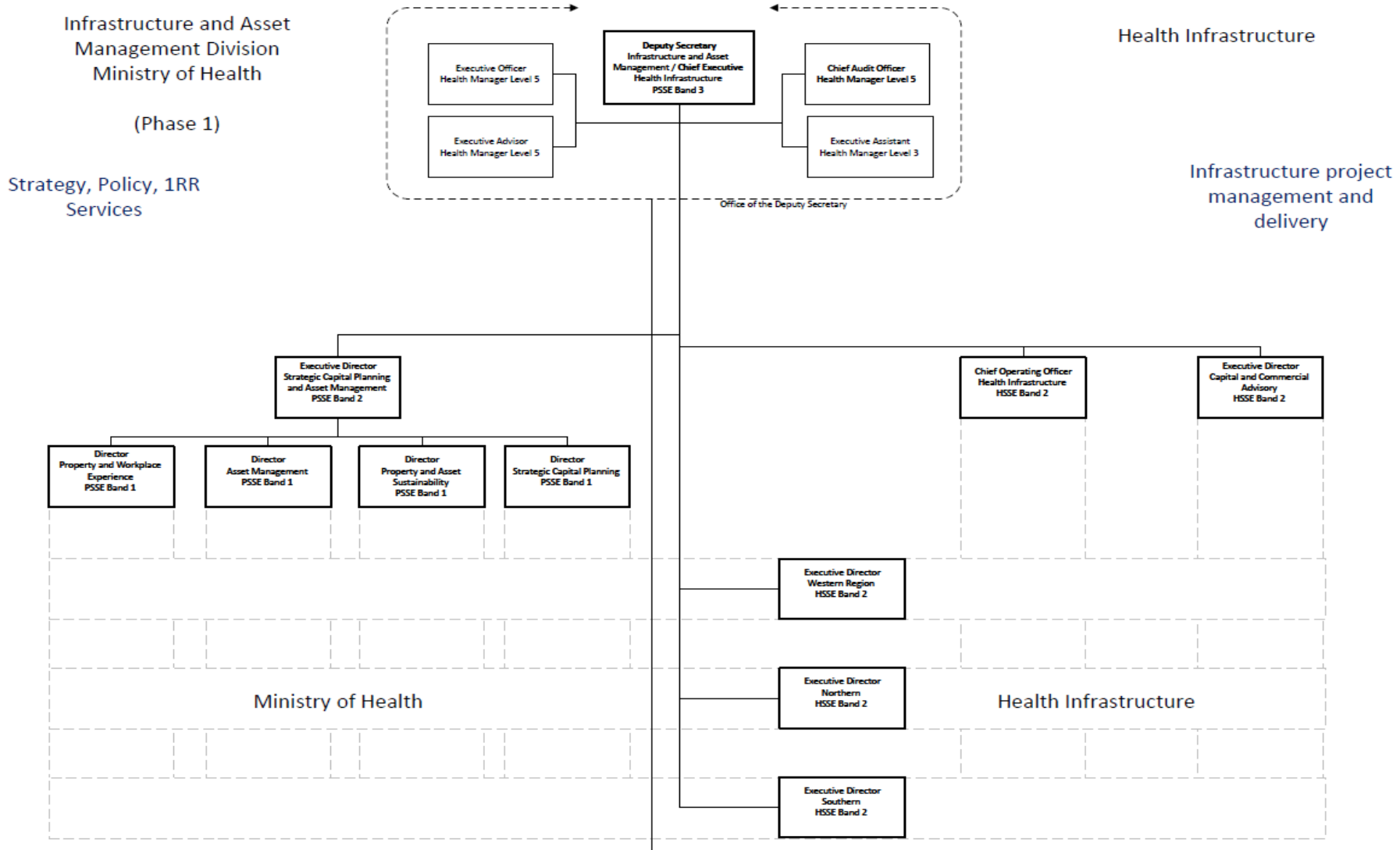


Phase 1 will include the movement of property and asset related teams from the Strategic Reform and Planning, the Strategic Asset Management, and the Corporate Services and Business Improvement Branch, along with some other teams from Health Infrastructure, to be grouped under the one Division in the Ministry of Health.

These teams are:

- Strategic Asset Management (Executive Director Office) (Currently MOH)
- Asset Management (Currently MOH)
- Property and Facilities and Asset Sustainability (Currently MOH)
- Property and Workplace Experience (Currently MOH)
- Strategic Capital Planning (Currently MOH)

Proposed Division Overview

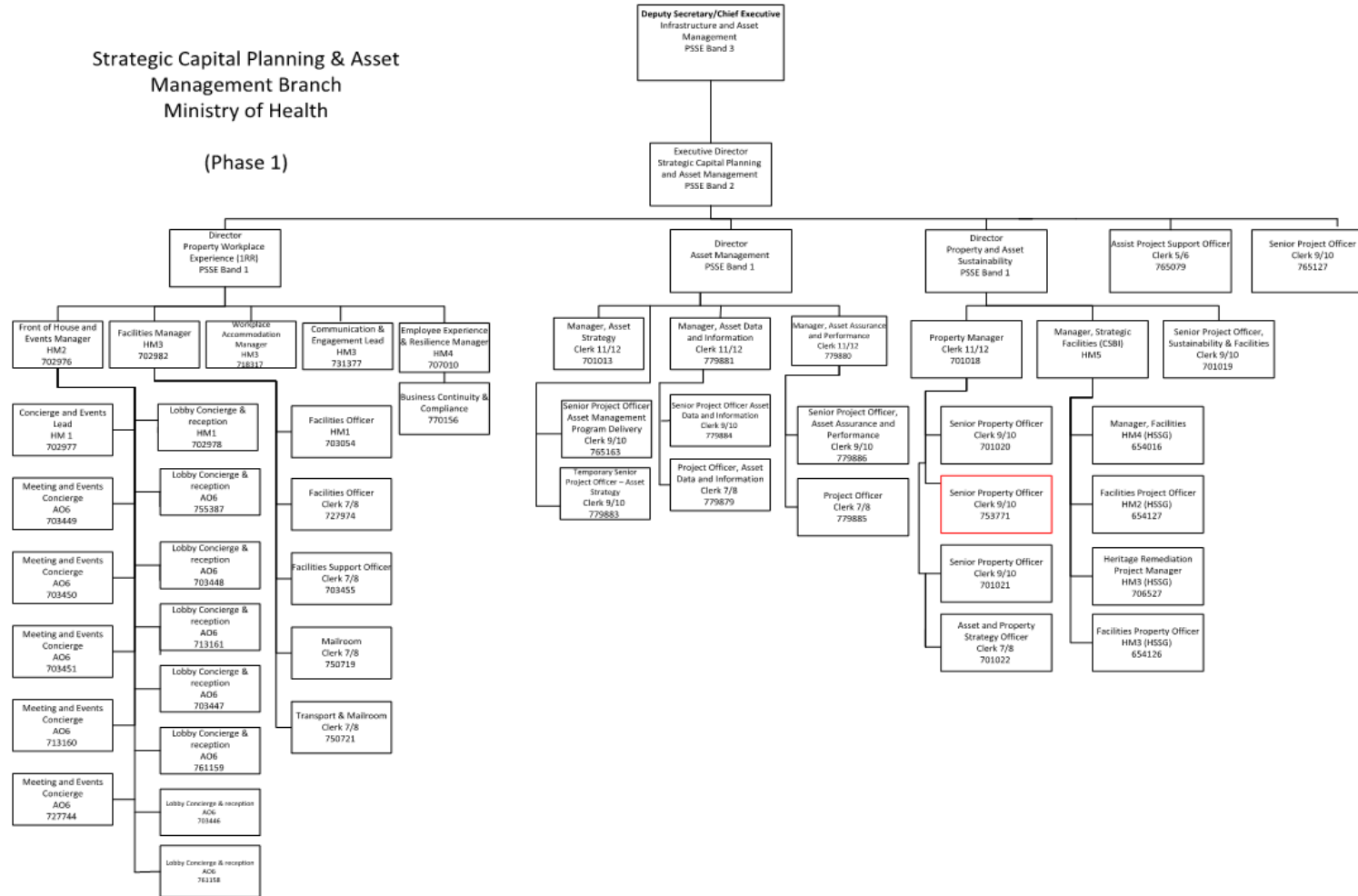


Strategic Capital Planning & Asset Management Branch



Strategic Capital Planning & Asset Management Branch Ministry of Health

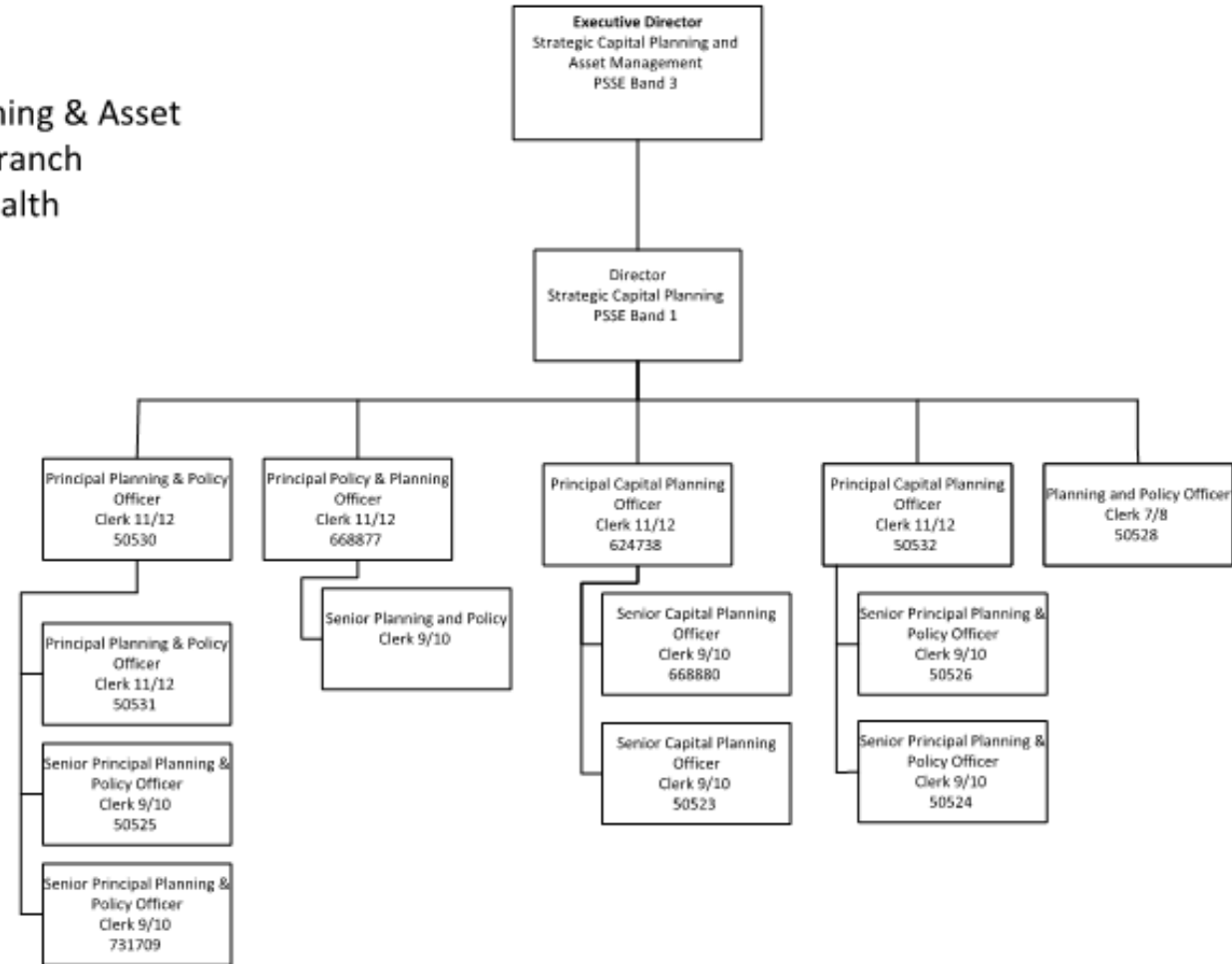
(Phase 1)



Strategic Capital Planning & Asset Management Branch



Strategic Capital Planning & Asset
Management Branch
Ministry of Health



Target Timeline- Phase 1

Action	Start Date	Finish Date
Consultation period	28 October 2024	11 November 2024
Feedback collated and responded	11 November 2024	15 November 2024
New structure announced	18 November 2024	
New structure established	9 December 2024	

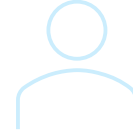
Consultation Process

1.



Consultation with staff will commence on **28 October 2024** and ends on **11 November 2024**

2.



One on one meetings with People and Culture are available for affected staff

3.



Staff are encouraged to send feedback to moh-humanresources@health.nsw.gov.au

4.



Any question received will be acknowledged with a direct response

5.



Feedback received will be acknowledged and sent to the leadership team for consideration during consultation.



Next Steps

- The consultation period runs from **28 October 2024 and ends on 11 November 2024**
- Today's presentation will be sent to staff via email.
- Reach out to your manager if you have any questions or concerns.
- Provide any feedback moh-humanresources@health.nsw.gov.au
- All feedback will be considered and assessed, and the final structure will be communicated to the team.

Support



**Catherine Ladomatos
Or
Chelsea Starkey
MoH P&C Associate Directors**

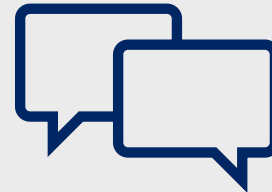


Health Services Union

You can contact your local
union representative
hsu.net.au/contact

Public Service Association

You can contact your local
union representative
Psa.asn.au



Employee Assistance Program

Call **1300 687 327** or
[www.convergeinternational.
com.au/contact/bookings/](https://www.convergeinternational.com.au/contact/bookings/)

There are Employee
Assist and Career assist
options



Your Manager